

MAIN STREET REVITALISATION

NYABING & PINGRUP

CONCEPT LANDSCAPE DESIGN PACKAGE

SEPTEMBER 2021

12806
A3 STREETSCAPE CONCEPT



TDL

Who we are... *What* we do... Who we *represent*...
What we want you to *know about us*...

BRIEF

Who we are... What we do... Who we represent...
What we want you to know about us...

Project Purpose

"To upgrade the main streets of Nyabing and Pingrup to encourage visitors to stop at each town and to improve the aesthetics while slowing traffic"

"To prepare a master plan that revitalises the main streets in each town, while encouraging the development of business and improving the existing character of the two towns. The proposed plan will be staged over a period up to 10 years."

Key design objectives

- Provide opportunities (workshops/surveys etc) for the community, existing community groups and key stakeholders to contribute towards the development of Main Street Enhancement Plan for the towns of Nyabing and Pingrup;
- Provide adequate landscaping and streetscaping to both towns to create attractive spaces that invite people to stay and linger;
- Ensure suitably shaded areas for the comfort and safety of travellers and residents;
- Enhance the safety and functionality between pedestrians and vehicles;
- Define and improve off street parking facilities / community space;
- Provide for the necessary tourist information and other facilities and assess connectivity between any existing historical/tourist landmarks;
- Amenity Improvements and Infrastructure projects to achieve the master plan
- Enhance entry statements, signage and street furniture; and
- Encompass and promote historic and cultural values.
- Develop strategies with property owners and shop proprietors to improve building appearance and create vibrant shop fronts.
- Improve the quality of appearance of public spaces with new street furniture, lighting, gardens and tree plantings, public art and opportunities for outdoor dining, fun and socialising.

Perth

320km

Perth--> Shire of Kent

Nyabing

"The Community That Cares"

Pingrup

"Where Lakes and Good Friends Meet"



Shire of Kent

Vision

"A community that places a high value on essential services; communications and technology infrastructure, improved social connectedness; community involvement and participation, a need to retain and grow the population, and to strengthen economic prosperity through the diversification of the local economy."

The Shire in the future is described as:

- A place with a sense of community, one that is thriving, vibrant, engaging and connected.
- A place that nurtures its youth and aging population;
- A place that has a range of services and facilities meeting our needs.
- A place that is growing and has employment opportunities, through local industry, which is based on the Shires local comparative advantages

Mission

Provide leadership, direction and opportunities for the community.

Key Principles: In achieving the Vision and Mission, we will set achievable goals and work with the community to maintain a reputation of openness, honesty and accountability. In doing so, we will:

Opportunities

Great Southern Treasure: a website that brings attention to destinations of the Great Southern Region:

- both Nyabing and Pingrup are part of the 'Family Fun' itinerary found on the website, encouraging tourists to stop for lunch at the Nyabing Hub/ accomidation and Pingrup for the Silo Art and accomidation
- Pingrup is part of the 'Art & Culture' itinerary for it Silo Art

Nyabing Country Womens Association (CWA):

- Car boot sale and market in the carpark/green area as well as on the side of the footpath in front of the CWA building
- Ladies Day
- Post baking ideas and recipes on the instagram page

Population & community

Population: 559 (296 in Nyabing, 263 in Pingrup)

Median age: 39

Council members: farmers, business owners, CEO's

Have the Pingrup Post and the Shire of Kent newsletter

Industry/agriculture

Large producers of :

Wool (1,961,000kg)

Wheat (103,839 tonnes)

Barley (42,709 tonnes)

Sheep (347,200)



Calendar

Jan

Feb

March

- Pingrup Races, Pingrup
- CWA Pop Up Shop, Nyabing

April

May

June

July

August

- CWA 85th Birthday Party, Nyabing (2021)

September

October

- 26th Annual CWA Market Day, Nyabing

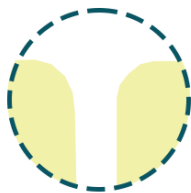
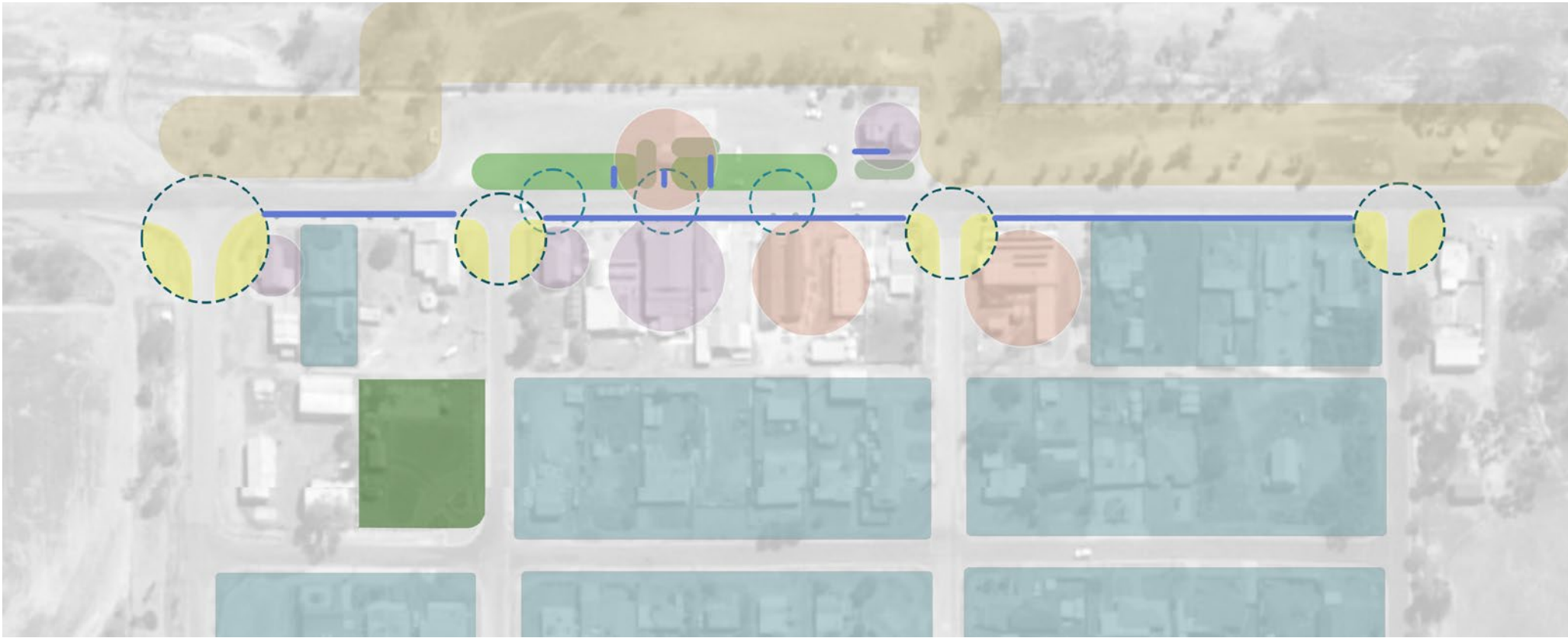
November

December

- Santa in the Park and Community Christmas Party, Nyabing and Pingrup

SITE ANALYSIS Nyabing

Who we are... What we do... Who we represent...
What we want you to know about us...



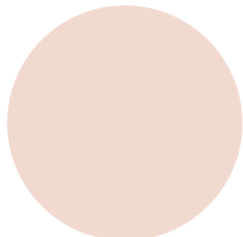
Nodes of main pedestrian traffic/focus areas

Design would help brighten up and improve these nodes, bringing attention to the town whilst also utilising the space to create safe movement through the street.



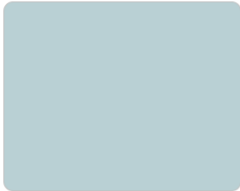
Historical/tourist buildings/museum

Enhancing these buildings will not only bring interest to the town, but will also show off the towns history and tell a story, strengthening the towns community and identity.



Commercial buildings/spots of interest for tourists

Buildings such as the grocery store, the Council, the Hub, shelter e.t.c, are integral to the town and its identity, with the more amenities there is the stronger the chance of increasing tourism to the town



Residential

It is important to have strong connections to residential areas, creating easy and accessible access for those who travel from their dwellings to the main street.



Underutilised green space/barren land

Utilising unused space/barren land could be an option for future design of the town, whether that be by beautifying the street, or creating communal open space for both the community and tourists.



Path/connection

Currently there seems to be a lack of appropriate and accessible footpaths crossing from the main street to the parking area, allowing improvements to be made to create a more user friendly town.



Pre-designed shrubbed/grassed area

There are a couple spaces where grass and shrubbed areas have been designed in the landscape to beautify the street and communal spaces, which, during the design process, can be improved and utilised to create more such spaces.

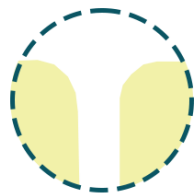


Parks with playgrounds

By bringing attention to the streets that connect to the playground, the chances of increasing families will rise, creating more movement through the town.

SITE ANALYSIS Pingrup

Who we are... What we do... Who we represent...
What we want you to know about us...



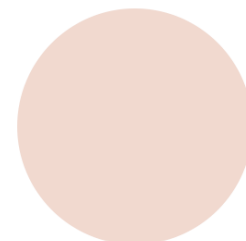
Nodes of main pedestrian traffic/focus areas

Design would help brighten up and improve these nodes, bringing attention to the town whilst also utilising the space to create safe movement through the street.



Historical/tourist buildings/museum

Enhancing these buildings will not only bring interest to the town, but will also show off the towns history and tell a story, strengthening the towns community and identity.



Commercial buildings/spots of interest for tourists

Buildings such as the Community Centre, the Cafe, the Petrol Station/Post Office, Caravan Park e.t.c, are integral to the town and its identity, with the more amenities there is the stronger the chance of increasing tourism to the town.



Residential

It is important to have strong connections to residential areas, creating easy and accessible access for those who travel from their dwellings to the main street.



Underutilised green space/baron land

Utilising unused space/barren land could be an option for future design of the town, whether that be by beautifying the street, or creating communal open space for both the community and tourists.



Path/connection

Currently there seems to be a lack of appropriate and accessible footpaths, by identifying the current path connections, improvements can be made to create a more user friendly town



Pre-designed shrubbed/grassed area

There are a couple spaces where grass and shrubbed areas have been designed in the landscape to beautify the street and communal spaces, which, during the design process, can be improved and utilised to create more such spaces.



Parks with playgrounds

By bringing attention to the streets that connect to the playground, the chances of increasing families will rise, creating more movement through the town.

SITE CONTEXT Nyabing

- The wide street tends to encourage faster traffic, with the large heavy vehicles i.e. trucks, speeding down the 50km street and causing safety issues for those wanting to cross from the carpark to the main street. It also tends to create significant noise pollution, affecting both residents whose dwellings are along the street, and those staying at the motel next to the hub.
- The lack of shaded areas prevents people from lingering in the town for a significant amount of time, with the lack of both soft i.e. trees, and hard i.e. shelters, elements also affecting the urban heat created during the summer months.
- Lack of accessible pathways creates an unsafe crossing between the carpark and the main street, with those in gophers and prams having to travel along the street in order to access a ramp and safely make it to a path.
- The excessively large carpark creates a barren and underutilised space, plenty room for large vehicles to park and reside but not spots for people to gather safely in an outdoor environment. With the lack of shade and shrubbery throughout the area as well not creating a wanted space to stay for too long.
- The Shire of Kent banner draws attention to the site and the street, with the bright colours creating a unique aspect to the site. By utilising colours and shrubbery it would help bring more attention to the street and would create a more inviting and welcoming communal space.
- The welcoming community and the hub are good strong bases for improving the landscape and design of the town. By utilising and enhancing these strong elements while also adding beautifying elements, the increase in movement through the area will hopefully increase and also create a more loving environment for those who live in and around the



Lack of appropriate and sturdy street trees, meaning no shade is being provided for the path.



Excessively wide road, not slowing down vehicles coming through causing speeding and noise pollution.



Possible main location for notice board and pinboard portraying the town and its historic/current way of life.



Lack of shade in the carpark and grassed area.



Lack of colour and vegetation along the street's edge.



Lack of accessible pathways and ramps connecting the carpark to the pathway.



Enticing Shire of Kent banner with bright colours and the vegetated seating area, bringing the attention of passers-by



Excessively large carpark with un-utilised space, with unshaded seating areas and barren land behind.



Strong historic culture which could create a unique nature to the town if utilised properly.

SITE CONTEXT Pingrup

- The lack of enticing entrances to the main street prevent people from moving through the site, leading people to directly pass by the town to either see the Silos or continue on their journey to Esperance or Lake Grace.
- The wide street tends to not slow down traffic, with the large heavy vehicles i.e. trucks, speeding down the 50km street and causing safety issues for those wanting to cross from the carpark and caravan park to the main street.
- The lack of shaded areas prevents people from lingering in the town for a significant amount of time, with the lack of both soft i.e. trees, and hard i.e. shelters, elements also affecting the urban heat created during the summer months.
- Lack of accessibly pathways creates an unsafe crossing between the carpark/caravan park and the main street and creates a barrier between tourists and the towns amenities, with those in gophers and prams having to travel along the street in order to access a ramp and safely make it to a path.
- The lack of appropriate vegetation on the verges creates an unwelcoming street, not bringing attention to the main intersections and spots of interest, thus not encouraging people to stay or move across the path.
- The caravan park is known for its good amenities and strong impact to the town, increasing shaded seating and vegetation would brighten up the area and bring more flow into the town.
- The new footpath through the bush connecting the Silo Art to the town was a good design move, and by increasing signage from the Silos as well as adding lights to the path, it could significantly increase movement to the town and bring more attention to the area and its community.



Strong historic culture which could create a unique nature to the town if utilised properly.



Lack of shade and colour in the caravan park.



Lack of appropriate footpath/accessible pathway, creating a barrier between tourists and the towns amenities.



Good caravan park amenities however only a few spots of shaded seating.



No appealing entrance to the town, causing tourists to go passed the town without the want or need to stay and go through it.



Silo Art creates a want to visit the town., bringing money and attention to the town.



Lack of shade and enticing resting area for the caravan park.



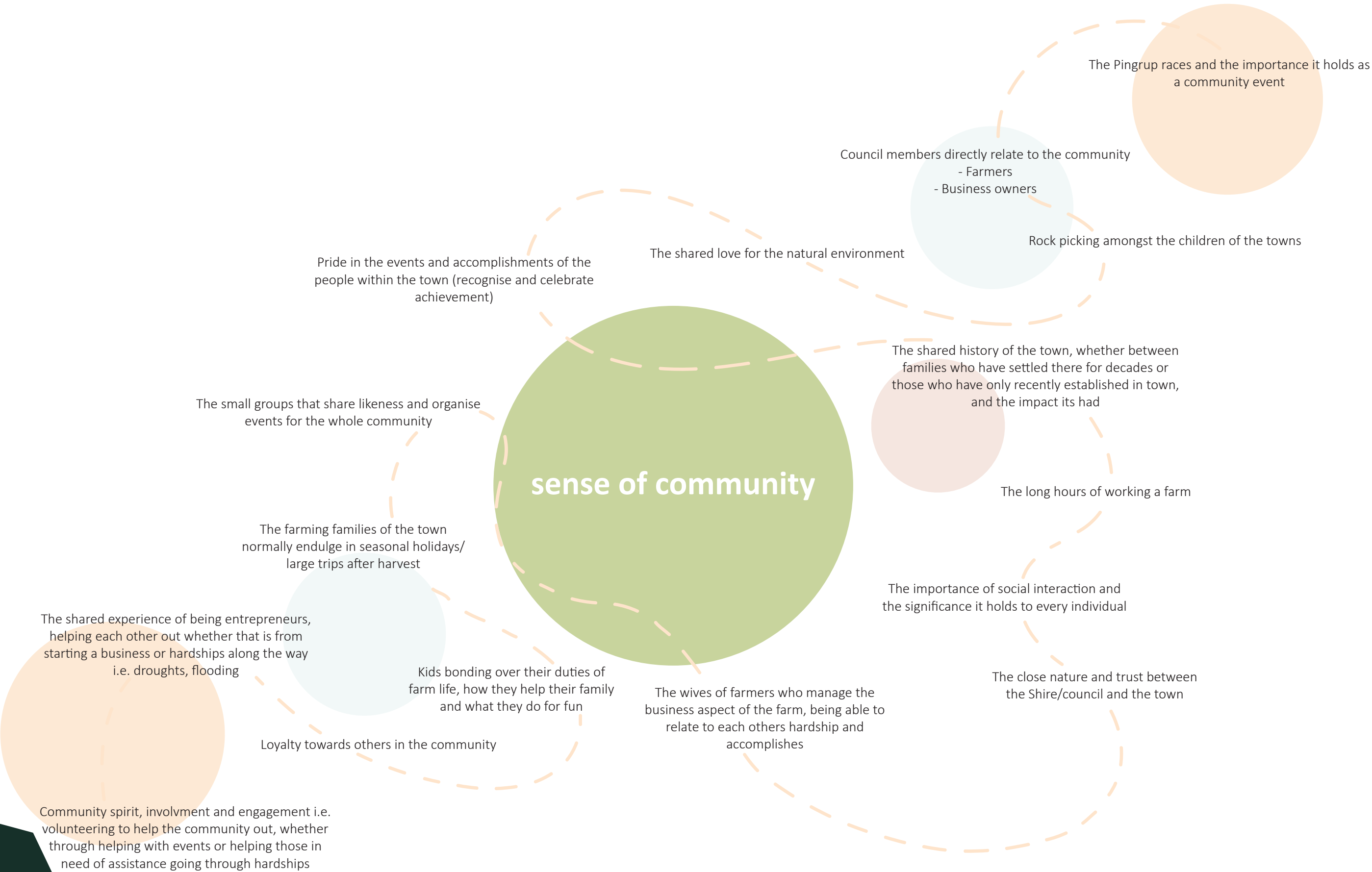
Wide Street and lack of appropriate vegetation/shade on the verge.



Excessive use of limestone, with lack of enticing colour and vegetation not bringing attention to the caravan park entrance.A

COMMUNITY ANALYSIS

Who we are... What we do... Who we represent...
What we want you to know about us...



SWOT - Pingrup

WHAT THEY ARE...

HOW TO ADDRESS THEM...

Flooding & slippery roads when wet from rain making it dangerous and making accessibility difficult and/or obstructed (irrigation)

Salty soil due to the salt lakes in close proximity to the town making it difficult to plant and keep them alive.

Diminishing population.



threats

Incorporate designs that will help irrigation throughout the main street, such as the addition of slopes, drains and vegetation to improve water managment.

Integrate raised planters and/or salt tolerant planting to the landscape, increasing vegetation and shade while overcoming the salty soil.

Design in a way where tourism is increased, introducing ingenuity to the towns main street through the use of colour and enhancement of its sites and amenities.

Caravan park lacks the number of shaded seating areas, making the population passing through stay for a shorter amount of time.

Lack of enticing entrances when passing from Lake Grace, discouraging movement through the town centre.

Lack of signage, shade, vegetation and colour throughout the town.

Lack of a hub doesnt provide a gathering spot for tourist and locals.

Qualified gardeners are difficult to find, making vegetation sparse and unappealing.

Family/community orientated, possibly making them conservative towards tourists.

Lack of strong lighting through the main street, discouraging travellers at night despite low crime rate.



weaknesses

Increase/incorporate soft elements (trees) and/or hard elements (shade structure) within the Caravan park area as well as on the main street, inviting people to spend time in the town.

New design of the entry statements that include unique characteristics of both towns.

Add inticing signage throughout the main street, bringing attention to the attriubutes of the town and encouraging movement. Increase street trees and vegetation along the footpaths with the addition of coloured planters or artwork throughout the garden beds.

Design using low maintenance planting.

Encourage community engagment within the town through the design of open spaces/nodes, bringing more tourist opportunities to create hubs that may not be a business, but an open space for gathering.

Incorporate lighting into the mainstreet, wheth- er through street ligting or the addition of more unique lighting characteristics i.e. accent lighting.

PINGRUP

A possible increase in tourism through the de- velopment of the Great Southern Region Trails Master plan.

The annual Pingrup races.

Increase in traffic on the Nyabing to Pingrup road.

Surrounded by Salt Lakes, encouraging a wide range of tourism opporutinites.

Great Southern Treasure Project bringing atten- tion to the town.



opportunities

Increase amenities on the main street, from accessible paths and signage, to stimulate movement through the area and make the town a must-stop place.

Design in a way that promotes future planning in the area i.e. paths and trails to the Salt Lakes surrounding the town.

Who we are... What we do... Who we represent... What we want you to know about us...

Caravan park has good amenities, often getting positive reviews from tourists.

Silo trail destination, bringing tourists and, in turn, ecuraged the development of the Grain & Silo walking trail through the bushland from the Caravan park to the Silo art. Increases communi- ty health, open space and tourism benefits.

Close community i.e. strong sense of commu- nity.

Old school museum on display to bring in tour- ism.



strengths

Increase signage for the caravan park to entice more tourist to stop at Pingrup rather than an- other town, making it a destination rather than a passing through point.

Possible addition of clear entry though to the silo, making it clear where the trail is to encourage movement into the town rather than passing through just for the Silo art.

Create open spaces within the design to en- courage community to come together, and/or expose the community itself and what makes them strong (notice boards displaying current way to farm and its benefits).

Signage, colour, and vegetation to encourage tourists to explore such buildings within the area.

SWOT - Nyabing

WHAT THEY ARE...

HOW TO ADDRESS THEM...

Flooding & slippery roads when wet from rain making it dangerous and making accessibility difficult and/or obstructed (irrigation)

Decrease in traffic flow through the town.

Diminishing population.



threats

Incorporate designs that will help irrigation throughout the main street, such as the addition of slopes, drains and vegetation to improve water managment.

Increase tourism promotion and signage for the area, with additional signage for the towns amenities from the main point of entry to the road that brings you through.

Design in a way where tourism is increased, introducing ingenuity to the towns main street through the use of colour and enhancement of its sites and amenities.

Excessively **wide main road**, decreasing the chances of vehicles slowing down to 50km, and creating division between the carpark, seating area, and the towns hub and shops (division between tourists and community).

Caravan park is separated from the town, with the towns **non-user friendly paths** and lack of enticing signage making those staying in town not encouraged to walk through.

Lack of signage, shade, vegetation and colour throughout the community making tourists drive through to the parking area without stopping by the towns amenities.

The **current rest stop is out of town**, separating tourists from the town and discouraging them to go to the hub and shops on the main street.

Lack of strong lighting through the main street, discouraging travellers at night despite low crime rate.



weaknesses

Design in a way that narrows the road visually and/or structurally, slowing down traffic therefore decreasing noise pollution, while also connecting the carpark to the strip of shop.

Add enticing signage throughout the main street, bringing attention to the attributes of the town and encouraging movement. Increase street trees and vegetation along the footpaths with the addition of coloured planters or art-work throughout the garden beds.

Create another outdoor hub area in the current main street carpark, while also increasing signage in the current rest stop to encourage stopping into town.

Incorporate lighting into the mainstreet, whether through street lighting or the addition of more unique lighting characteristics i.e. accent lighting.

A possible increase in tourism through the development of the **Great Southern Region Trails Master plan.**

Cycle Touring Association 2021 could bring interest to the area.

Country Womens Association (CWA) holds events throughout the year, including carboot sales/pop up shop, and market days.

Great Southern Treasure Project bringing attention to the town.



opportunities

Increase amenities on the main street, from accessible paths and signage, to stimulate movement through the area and make the town a must-stop place.

Create open enticing spaces on the landscaped strip, providing shade and grassed spaces for those participating and visiting.

Who we are... What we do... Who we represent... What we want you to know about us...

Close community i.e. strong sense of community.

Locals love and appreciate the parking facilities, which facilitates both light & heavy vehicle parking.

The Hub is a positive gathering place, providing a cafe, pub and community spot for tourists and locals to mingle.

The people of the town are known to be **very friendly and welcoming.**

The **town is very neat and tidy**, making it a welcoming town to those coming through.



strengths

Create open spaces within the design to encourage community to come together, and/or expose the community itself and what makes them strong (notice boards displaying current way to farm and its benefits).

Keep parking facilities large however organise bays to bring order to the wide street.

Provide signage and visual indicators of the hubs location from the carpark, with accessible and formal crossings that lead directly to the main stopping/parking point.

Encourage engagmenet between tourists and the community, with shared open spaces and motivation to move through the towns amenities.

Create more aesthetic paths and vegetated sidewalks to further expose the cleanliness and tidyness of the towns main street.

shared design elements

Increase engaging signage indicating spots of interest to tourists.

Create open spaces/pockets along the main street to encourage connection between the community as well as the communities connection to tourists.

Increase coloured elements that represent both towns, from its salt lakes to the silks of the Pingrup racers. Design in a way that utilises colours to expose elements of the town i.e. to indicate entries or points of significance, or to expose connections from the carpark to the shops e.t.c.

Include artistic statements throughout both towns that show the history and present elements of the town, from old to new farming equipment, art works from locals, and photographs that portray the Shires unique landscape i.e. farming patterns, Salt Lakes e.t.c.

Addition of lights, whether using hard elements or accent lighting to provide a unique indicator of the key sites of the towns i.e. the old school, the Salmon gums, old farming equipment, the entry statements e.t.c.

New entry statements that share characteristics of the Shire of Kent, possible inclusion of the farming industry, the kids of the area, and the key importance of the community.

Fix/enhance the road and include elements that diminish flooding in the main street, either through introduced shrubbery and/or swales.

NYABING

Further expose the towns neatness with low maintenance vegetation and the increase of spaces for sitting and eating with readily available bins and amenities.

The design and enhancement of the median strip between the carpark and the main road, enlarging the green turf area to provide a more noded space for events (CWA markets and boot sale) and picnic areas, as well as the inclusion of trees for shade and vegetation for colour and aesthetic.

Narrowing of the road to slow down speed and provide more safe connection between the carpark and the towns amenities, whether through...

- Nodes of vegetation, seating and shade
- Visual elements that deceive drivers to slow down when coming through town i.e. trees & lights along the path/street and the median
- Formalise parking through line work indicating parking spots

Addition of more accessible pathways, with adjacent slopes for those in gophers and wheelchairs enabling them to safely cross between the road to the carpark.

Utilise the space at the back of the parking spot, adding pockets of shaded paved areas with seating and amenities, each with signage of what is in the town and what the community do for a living i.e. farming, business owner, including facts of each unique to the country.

PINGRUP

Create more accessible and appealing pathways that encourage movement through the town, with additional vegetation to create an aesthetic and welcoming connection, while also lowering urban heat during the Summer.

Enhancing the carpark and caravan entry area with signage, colour, shade and vegetation to indicate a key spot of interest to tourists.

Low maintenance shrubbery that allows all year round vegetation and colour to create an aesthetic mainstreet, using vegetation to indicate key spots of interest to create a visual pull rather than an over use of signage.

Create open spaces along the street and in areas off the street to provide spots for the community to gather and interact with tourists, whether through additional green space defined by vegetation or formal connections leading to areas of interest within the town.

COMMUNITY CONSULTATION Community

Who we are... What we do... Who we represent...
What we want you to know about us...

COMMUNITY

Proud of...

- Community pride and resilience
- Sense of community
- The Shire is known for its neat rubbish-free streets and safe community
- The Silos as the Shire tourist identity
- The history of the land, its people, and the growth of the community

IMPROVEMENTS FOR NYABING

- Suitable planting that will not only thrive in the area, but add colour and beautify the main street i.e. frost and heat tolerant
- An increase in signage to the important sites of the town
- Traffic calming: due to the wide width of the road, vehicles tend not to slow down to 50km/hr when coming through the town, decreasing safety and increasing noise pollution
- Road and path upgrades to improve accessibility and drainage along the main street
- Street art and colour that catches peoples eyes when coming through town, to encourage stopping at the sites and amenities
- Increase in outdoor amenities such as furniture, lighting, and nature play areas
- Increase in portrayal of history throughout the town and tourist information, possibly through information map in suitable location
- Increase in green infrastructure, including shade from trees along the verge and an increase in grassed areas

IMPROVEMENTS FOR PINGRUP

- Removal of dead vegetation
- Suitable planting that will not only thrive in the area, but add colour and beautify the main street i.e. salt, frost, and heat tolerant
- An increase in signage when entering town as well as to the important sites of the area including the caravan park
- Road and path upgrades to improve accessibility and drainage along the main street
- Street art and colour that catches peoples eyes when coming through town, to encourage stopping at the sites and amenities
- Increase in hard elements, including shaded seating areas, lighting and possible nature play area
- Increase in both the history and present way of life alongside tourist information possibly through information map in the parking area/caravan park
- Increase in green infrastructure, including shade from trees along the verge and an increase in grassed areas

Mardi and Suma



A neat & tidy town



A town that looks loved and that is loved



Aesthetically pleasing to both residents and visitors alike



A space which encourages visitors to wander



Low maintenance but with impact

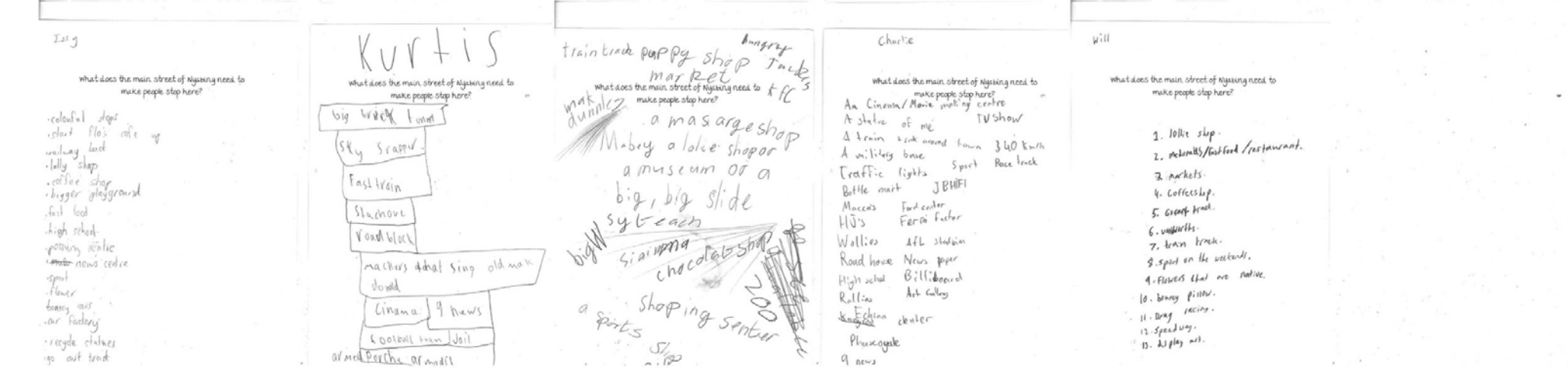
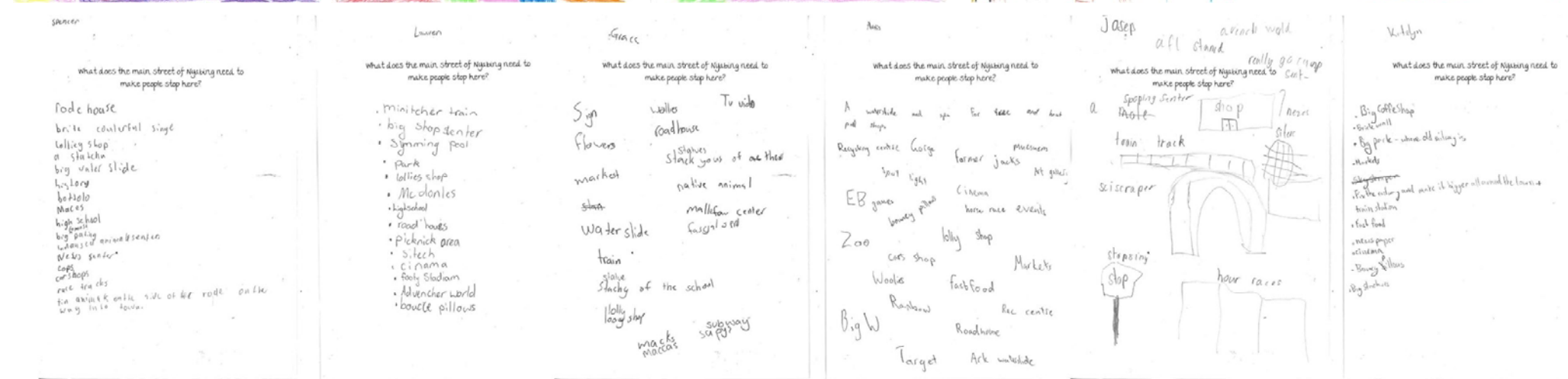
"To upgrade the main streets of Nyabing and Pingrup to encourage visitors to stop at each town and to improve the aesthetics while slowing traffic"

Jo CWA (Country Womens Association)



COMMUNITY CONSULTATION Children

Who we are... What we do... Who we represent...
What we want you to know about us...



Alexis
 lolly shop
 Grace
 water slide
 Josep
 train track
 Will
 sport on the weekends
 Charlie
 Wallies
 Lauren
 minitcher train
 Isy
 colourful shops
 Katelyn
 Big Coffee Shop
 Kurtis
 Cinama

PRECEDENT CASE STUDIES

*Who we are... What we do... Who we represent...
What we want you to know about us...*

BRUCE ROCK MAIN STREET



The key outcomes from Bruce Rock that relate to the Pingrup and Nyabing outcomes include the redesigning of the street to improve traffic flow and safety, improving pedestrian connection by narrowing the traffic lanes, including and bringing light to the historical elements of the town, signage, and improving the facade of the main street and its buildings.

The inclusion of colour to the road is something that could be integrated into the Kent revitalisation, with colours relating to the environment of the area and its significance. The creation of the urban area, although something that we might not relate back to in Pingrup and Nyabing, produces ideas of creating open space to gather and explore, for both residents and tourists passing by.

MORAWA TOWN CENTRE AND MAIN STREET REVITALISATION



Similar to the key principles and wanted outcomes of the revitalisation of Nyabing and Pingrup, the Morawa Town Centre and Main Street Revitalisation focussed on "attracting and retaining investment and growth in Morawa". They desired to create a more pedestrian friendly main street, a key design principle of the Shire of Kent project, trying to make access to and from the street more accessible and comfortable for both visitors and residents.

Similar to Shire of Kent, Morawa's main agriculture business' is wheat, along with sheep, cattle and sandalwood. The structure erected in Morawa portrays the farming business, with its shape and symbols relating to wheat, something that was a strong want to portray in the both Pingrup and Nyabing.

With the inclusion of subtle symbols and artworks within the towns design, relating back to both its history and present way of farming, could create a more attractive and unique street.

SHEPPARTON MOOOVING ART COW



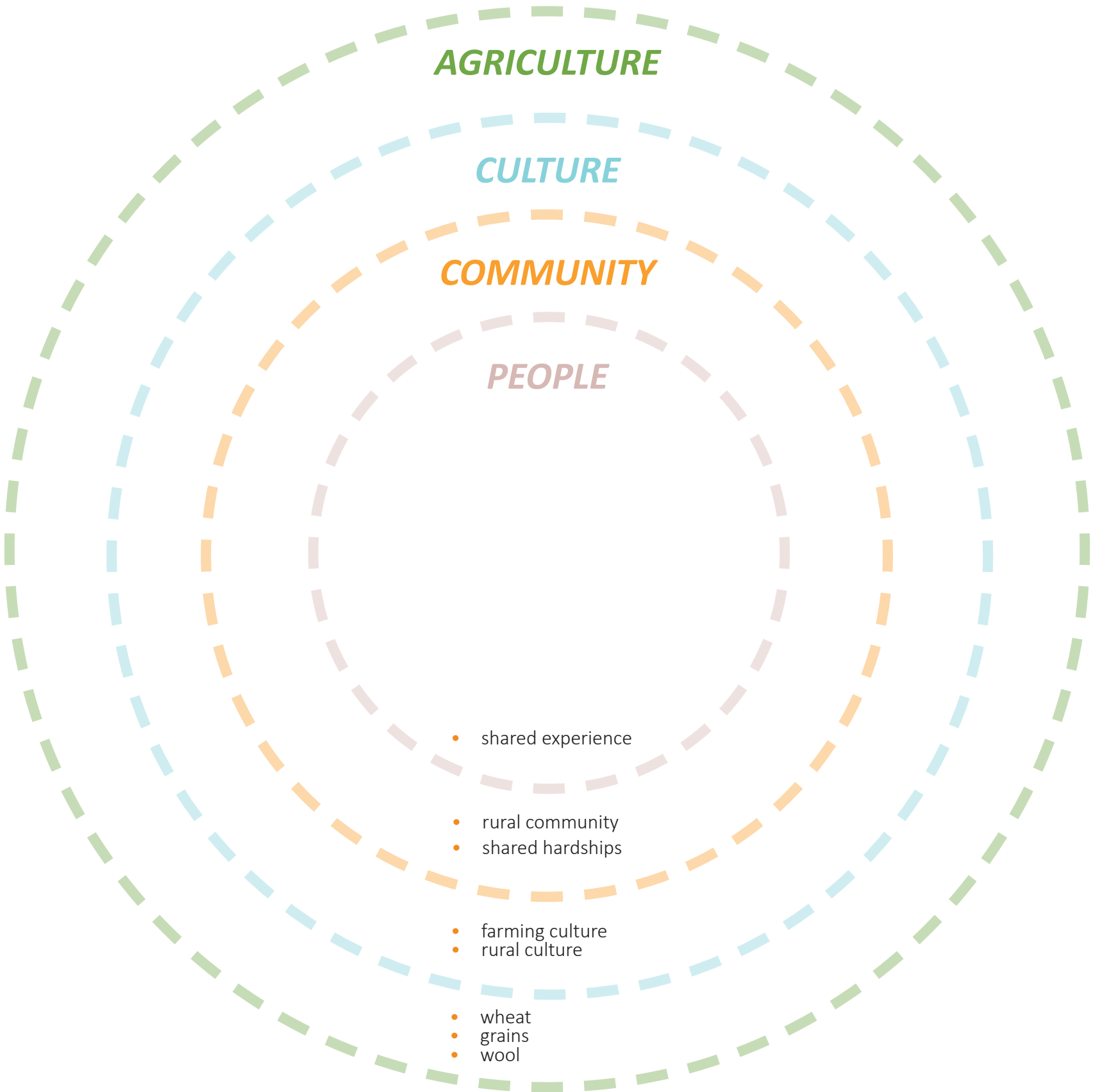
When talking to Mardi and Suma during the community consultation, they brought up the idea of adding sculptures and artwork to both towns that will encourage movement through the area. They mentioned the Shepparton Moooving art Cows as an inspiration, with statues of horses or farming equipment that could be painted by the school kids, residents, and public.

The Shepparton cows came around after the Council thought it a good form of enjoyment for the local community and visitors, with established and emerging artists painting and decorating the cows to be put on public. With about 90 cows currently, it is a way to also bring attention to the dairy industry in the Greater Shepparton area, somethingt that could inspire possible artistic endeavours in the Shire of Kent.

The inclusion of unique pieces such as the Shepparton cows could bring attention and colour to the towns, while also reflecting the community and its historical and cultural values.

BUILDING BLOCKS

Who we are... What we do... Who we represent...
What we want you to know about us...



CORE CONCEPT PRINCIPLES

Who we are... What we do... Who we represent...
What we want you to know about us...

Create safe traffic flow

- 1 Narrow the main street to decrease the speed in which vehicles travel through, either visually (trees & lighting) or physically (nodes & formal parking)



growth

Improve & increase green infrastructure/vegetation

- 2 Include street trees and planting beds to provide shade and colour to the streets, while also utilising and adding to the median strip to increase shade and grassed area to create a safe gathering space.



raw material

Improve connections & accessibility:

- 3 Form formal connections between parking/main street with the stores/buildings, through brightening the connection nodes with lights and accent lighting, signage, vegetation and using colour



Create a unique and inviting main street that promotes the community & is inviting to tourists.

- 4 Promote artworks/art sculptures throughout the towns i.e. utilise the school kids and/or local artists that can portray the communities current and historical and cultural importance.



sustainability

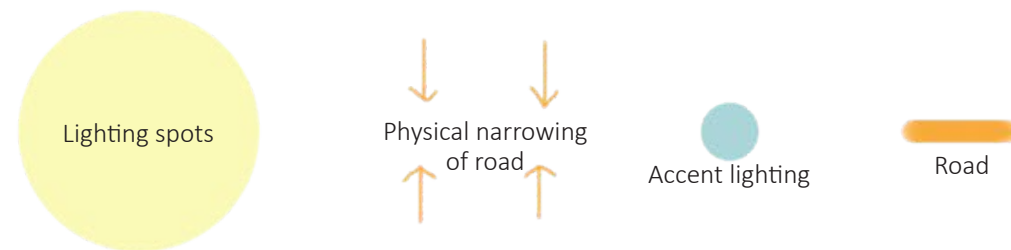
CONCEPT PRINCIPLES MAPPING 1

Who we are... What we do... Who we represent...
What we want you to know about us...

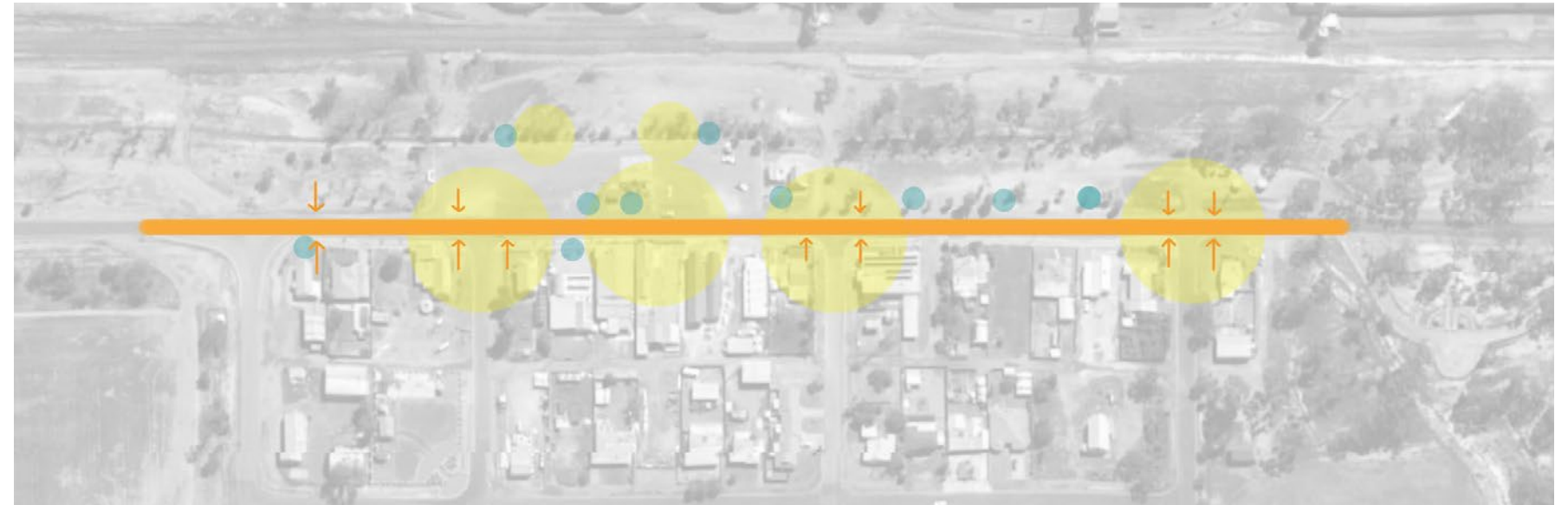
Create safe traffic flow

1

Narrow the main street to decrease the speed in which vehicles travel through, either visually (trees & lighting) or physically (blisters & formal parking)



NYABING



PINGRUP



By creating traffic calming nodes on the intersections of Richmond street/Jury street and Richmond street/George street (*Nyabing*), and Sanderson street/Burston street and Sanderson street/Altham street (*Pingrup*), vehicles will slow down due to the visual and physical narrowing of the road. By creating the blisters using vegetation, colour and lighting, attention will be brought to those areas, highlighting a safe connection node for those walking down the street.

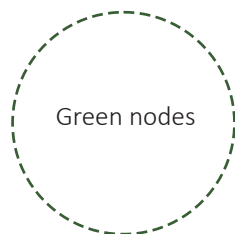
Placing accent lighting in front of historical/important buildings and vegetation will bring attention to those key element of the site during the night, creating more enticing night elements to the town. Further down the design track, bringing in night elements/events to the Shire can encourage future tourism.

CONCEPT PRINCIPLES MAPPING 2

Who we are... What we do... Who we represent...
What we want you to know about us...

2 Improve & increase green infrastructure/vegetation

Include street trees and planting beds to provide shade and colour to the streets, while also utilising the median strip to increase shade and grassed area to create a safe gathering space.



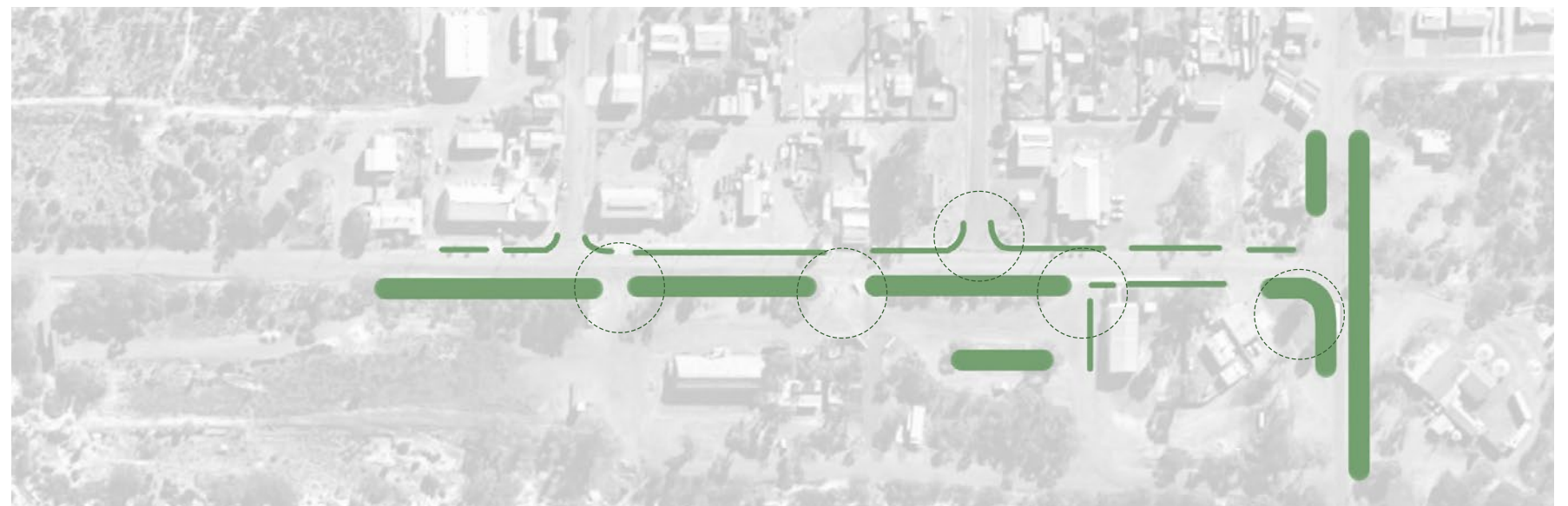
Mass planting of colourful salt tolerant planting

Verge planting

NYABING



PINGRUP



By increasing the green infrastructure and vegetation within both towns, it encourages those passing through to stop and take in the towns amenities, utilising the outdoor communal pockets as well as the hub and/or cafe within the towns. It also beautifies the street, bringing attraction to the area and creates a more welcoming walk for not only tourists, but also the community, bringing together both parties and exposing the strong community already present.

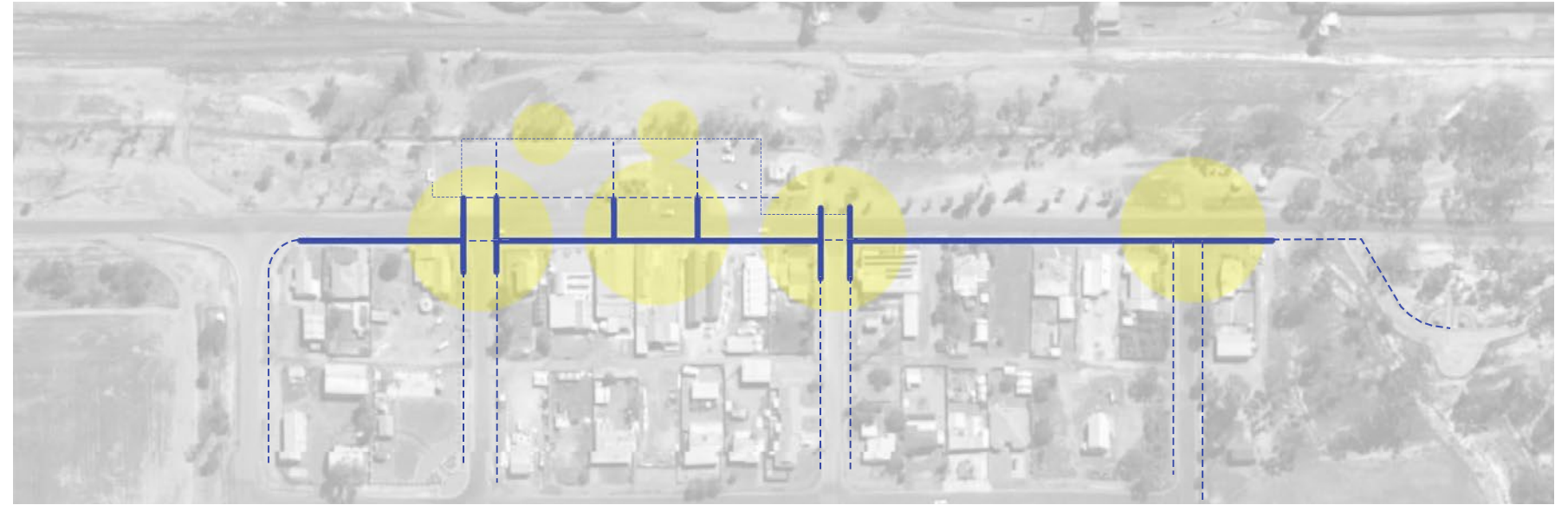
By increasing colour through planting, the beauty of some of the Shires native vegetation will be exposed and put on display, with the salt tolerant planting providing a more unique planting palette then most are used to seeing in the city and/or other parts of Western Australia.

CONCEPT PRINCIPLES MAPPING 3

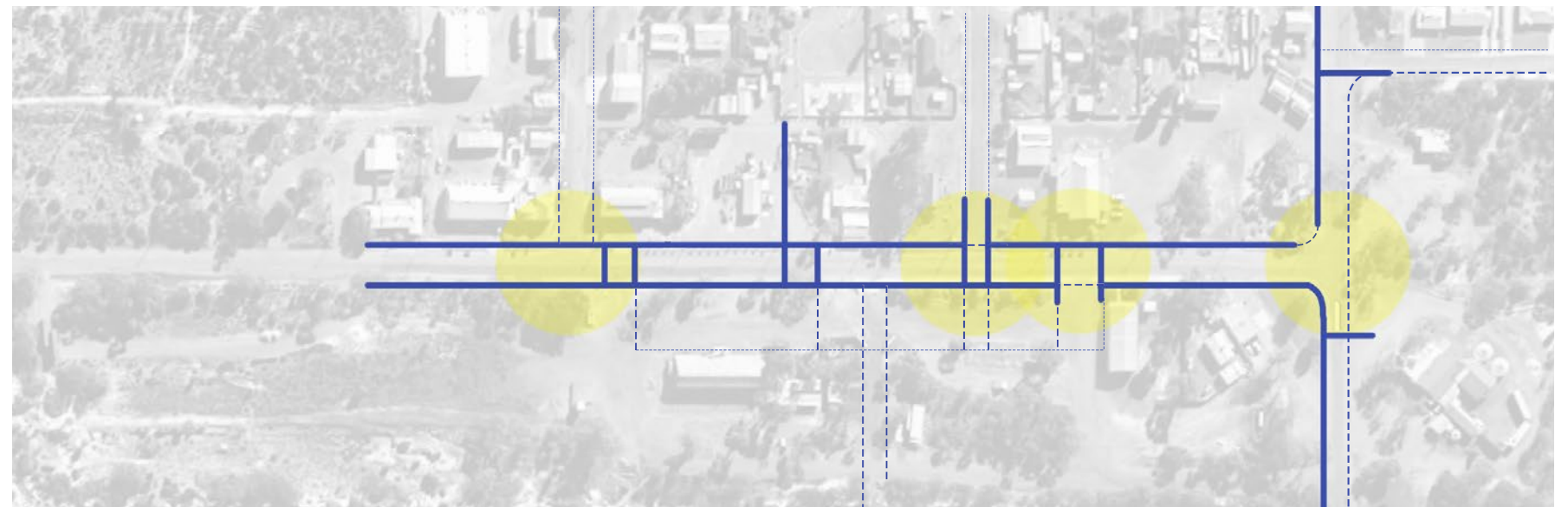
Who we are... What we do... Who we represent...
What we want you to know about us...

Improve connections & accessibility:

NYABING



PINGRUP



3

Form formal connections between parking & the main street with the stores & buildings, through brightening the connection nodes with lights and accent lighting, signage, vegetation and using colour



Main connections across main street

Major connections through to important sites and housing

Minor connections

Increasing accessible pathways will create more want and movement throughout both communities, whilst additional formal pathways will increase the safety of the connections while also creating a more user friendly town. By designing these main connections with vegetation, colour and lighting, it also beautifies the streets, creating a more unique look to the town whilst also creating a colourful thoroughfare for those passing through.

Creating more formalised parking without decreasing parking space will also help to uniform the connections, with increased signage also guiding tourist through the town to the communities amenities.

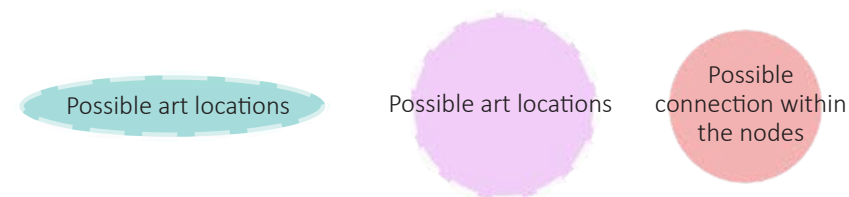
CONCEPT PRINCIPLES MAPPING 4

Who we are... What we do... Who we represent...
What we want you to know about us...

Create a unique and inviting main street that promotes the community

4

Promote artworks, sculptures and murals throughout the towns i.e. utilise the school kids and/or local artists that can portray the communities current and historical and cultural importance.



NYABING



PINGRUP



Inspired by the childrens artwork during the community consultation, the idea and concept to incorporate art throughout both towns will create more unique and distinguishable elements to the streets.

This possible artwork incorporation will also open up the opportunity to create a community event, with the idea of annual redesigning of the artworks of the town, inviting children from the schools, the community, and tourists to revamp the towns unique elements to promote the community and its history, present, and future.

PLANTING details

Who we are... What we do... Who we represent...
What we want you to know about us...

Due to the regions notorious salt lakes that are in close proximity to the towns, the soil within the area is very salty, making planting shrubbery and trees very difficult if they are not able to sustain themselves within the saline conditions. Due to this, planting within the towns has proven to be difficult, meaning within the design, either salt tolerant planting needs to be the main planting palette, or planter beds are to be used in predominance. When walking through the town of Pingrup with the locals who came to us during community consultation, posters within the old community hall indicated species found in the local area, shrubs including; *Melaleuca sp.*, *Calytrix sp.*, *Dampiera*, *Stackhousia monogyna*, *Pyrorchis nigricans*, *Stylidium sp.*, *Callistemon phoeniceus*, *Grevillea cagiana*, *Lechenaultia formosa* and *Hakea laurina*, and trees; *Eucalyptus salmonphloia*, *Mallee*, *Eucalyptus platypus*, *Eucalyptus nutons*, *Eucalyptus ravida*, *Eucalyptus spathulata*, *Eucalyptus occidentalis*, *Eucalyptus gardneri*, *Eucalyptus kondininensis* and *Quandong*.

Within the design, use of both low-maintenance, native, and colourful planting is a key concept, bringing both an easy aesthetic to the street whilst also creating a unique thoroughfare through the towns, showing off the local flora and encouraging movement through the sites. Locating more colourful and eye-catching planting to the key nodes is to bring attention to more focused areas of the street, whether that be a main connection between the 2 sides or an area of interest for the public i.e. art, historical buildings. Using planting to narrow the road visually is also a concept brought into the design, slowing down traffic through the town thus making it safer to travel through the area. By adding distinct shrubbery to the intersections of the street, it also creates unity as the road continues, creating a more balanced, aesthetic street.

nurseries

Katanning Environmental Nursery
8 Curlew Street
Katanning WA 6317
0428 479 623
nursery@katanninglandcare.org.au
<https://katanninglandcare.org.au/>

Southern Flora Nursery
79 Blechynden Street
Bridgetown WA 6255
0437 872 954
southernflora@iinet.net.au
<https://www.southernflora.com.au/>



tree planting

Tree planting will need to incorporate not only shade elements, but also addition of colour, whether that be through its unique flowers or its leaf cycle throughout the year.

Typical species found in the area such as Eucalyptus would be used for revegetation and grassed areas, providing all-year round visual appeal, shade that will cool down the environment below, and bring unity between the site and the natural environment of the area.

By adding deciduous trees or naturally colourful species that are bright in colour to the intersections, blisters and entry points, attention is brought naturally to the areas, lowering the need for signage to indicate connections to the roads whilst also beautifying the street.

shrub planting

The use of salt tolerant species, although minimal, will bring a unique planting palette to the Shire, exposing tourists as well as the community to the beauty of the shrubs found in the area. Species such as Atriplex, Acacia and Melaleuca would work well in the area, already bringing a unique colour palette and textures to the site and the street.

PLANTING palette

PLANT CONCEPT PALETTE

PRELIMINARY TREE SELECTION



Acacia saligna



Melaleuca preissiana



Melaleuca leucadendra



Acacia stenophylla



Santalum acuminatum



Eucalyptus campaspe

SALT TOLERANT PLANTING



Stylidium sp.



Atriplex lantiformis



Atriplex undulata



Atriplex semibaccata



Banksia ericifolia



Banksia spinulosa



Callistemon phoeniceus



Dampiera lavendulacea



Dianella 'Little Jess'



Grevillea cagiana



Hakea laurina



Lechenaultia formosa



Lomandra longifolia



Melaleuca decussata



Melaleuca radula



Stackhousia monogyna



Raphiolepis indica



Rhagodia spinescens



Westringia mundi



Westringia fruticosa

Who we are... What we do... Who we represent...
What we want you to know about us...

MATERIALS raw materials

There are plenty of raw materials within the town, from tires belonging to old farming equipment, metal/materials to be utilised for possible structures/artworks. Utilising history also is a raw material, developing the strength it has in the towns and transforming elements into the design.

Who we are... What we do... Who we represent...
What we want you to know about us...

people



The art produced by the children of the school

The farmers, entrepreneur, CEO shared experience

Families and farmers wives



incorporate the children and their art into the landscape, encouraging future events

portrayal of the Shires people through exposure of their way of living and their businesses

community



The strong history of the towns i.e. farming, horse race

Strong connection between the community and farming life

Strong connection to natural environment



create open spaces to encourage community engagement with others of the community and tourists

portrayal of history within the landscape i.e. art, symbols, colour

culture



Artwork provided to us by the student

Rocks from rock picking on the farm

The town and its way of life i.e. farming culture, rural town culture



Use of rock gabian to combine the farming culture into the landscape

agriculture



The patterns seen at a birds eye view level of the farming fields

Tires and old farming equipment that is not utilised

New modern farming equipment

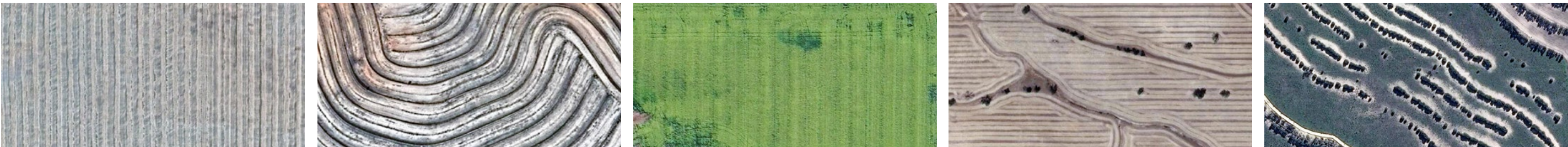


Use of patterns of the land incorporated into the design through art or shapes

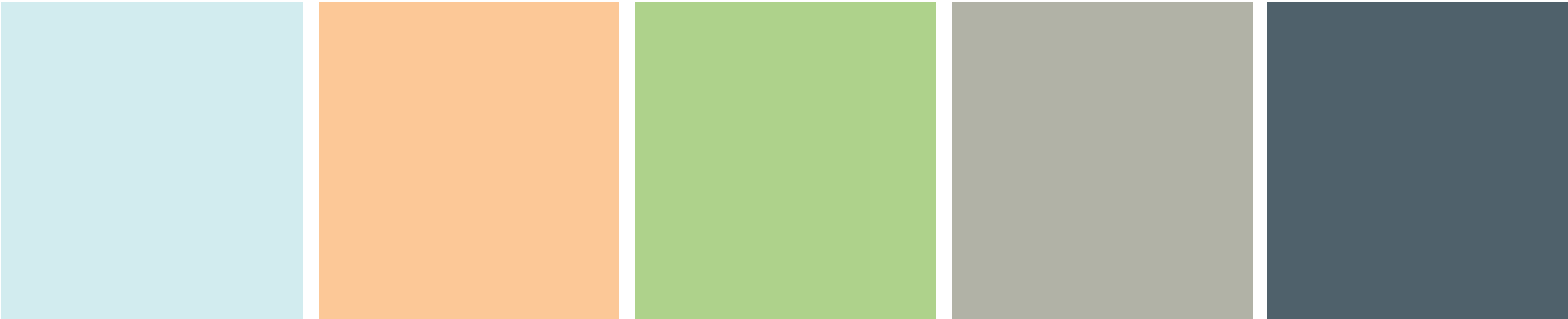
Signage/boards portraying current way of farming and how it once was

MATERIALS concept colours/pattern palette

Who we are... What we do... Who we represent...
What we want you to know about us...



Nyabing
Inspiration: Land palette



Pingrup
Inspiration : Silk palette



LANDSCAPE OVERVIEW Nyabing

Concept key design notes

VEGETATION

- Revegetate the barren land areas north of the street and carpark with salt tolerant planting to beautify the street.
- Create nodes on the intersections that slow down traffic and provide seating, colourful shrubbery, and shade, creating small gathering spaces to make visitors and residents linger.
- Increase the turfed area, closing off on of the entry points to the carpark and creating a more connected and accessible grassed space.
- Add verge planting and/or planters to the path, cooling down the hot path while also bringing colour to the street.
- Increase tree planting, with more key and colourful flowering trees on the nodes and blisters to draw attention to the key connection points.

ART/COLOUR

- Mural walls in and around the connection node, utilising space that brings a unique element into the town and encourages movement through the area.
- Spread colourful structures and/sculptures throughout the town and in key attractions, creating fun for the kids and bringing attention to the history of the site.
- Add additional colour to the pathways where nodes of importance are i.e. crossing connctions to the other side of the street.

LIGHTING

- Use accent lighting on hisotical buildings/key attractions for night time attention.
- Accent trees of importance in the area.

ACCESSIBILITY/SAFETY

- Create formed pathway connection on both sides of the street, with ramps for accessibility and straight connections to the other sides i.e. ramps on both sides.
- By narrowing the road and showing clear connection nodes vehicles will be more inclined to slow down, thus making the street safer to cross.

GATHERING SPACE

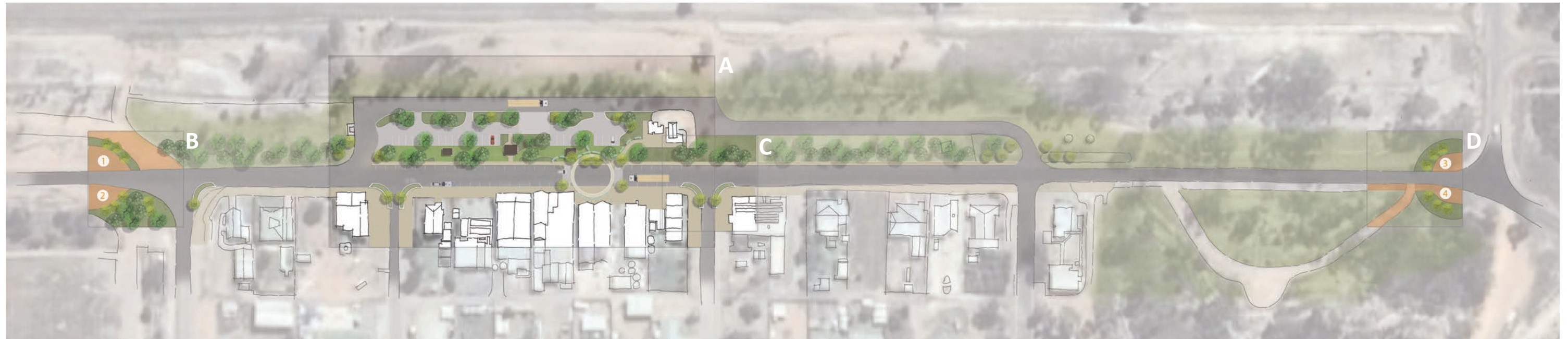
- Transform current grassed area into a more appealing seating spot, with shade from trees and an increased grass and shrub space, possibly enlarging it to create more space and formalise the carpark area.
- Change pavement of the current carpark to distinguish heavy and light vehicle parking, also with the chance of converting the light vehicle parking into an outdoor gathering space for possible events.
- Create shaded gathering areas north of the carpark, to encourage people to stop and eat outside while also bringing attention to the grain silos behind.

Who we are... What we do... Who we represent...
What we want you to know about us...



LANDSCAPE OVERVIEW Nyabing Concept Masterplan

Who we are... What we do... Who we represent...
What we want you to know about us...



Key design points that relate directly to Pingrup...

- Further expose the towns neatness with low maintenance vegetation and by increasing spaces for sitting and eating with readily available bins and amenities.
- Narrowing of the road to slow down speed and provide more safe connections between the carpark and the towns amenities, whether through; nodes of vegetation, seating and shade; visual elements that deceive drivers to slow down when coming through town i.e. trees & lights along the path/street and the median; formalise parking through line work indicating parking spots.
- Addition of more accessible pathways with adjacent slopes for those in go-peders and wheelchairs, enabling them to safely cross between the road and the carpark.
- Utilise the large carpark by adding pockets of shaded paved areas with seating and amenities, with signage of what is in the town and facts of what the community do for a living i.e. farming, business owner, and their impact on the economy.
- The design and enhancement of the shrubbed strip between the carpark and the main road, enlarging the green turf area to provide a more friendly space for events (CWA markets and boot sale) and picnic areas, with additional trees for shade and vegetation for colour and aesthetic.
- Increase coloured elements that represent both towns, from the Shires salt lakes, to the silks of the Pingrup Jockeys. Design in a way that utilises colour to expose elements of the town i.e. to indicate entries or points of significance, or to expose connections from the carpark to the shops e.t.c.

Provide opportunities (workshops/surveys etc) for the community, existing community groups and key stakeholders to contribute towards the development of Main Street Enhancement Plan for the towns of Nyabing and Pingrup;

Provide adequate landscaping and streetscaping to both towns to create attractive spaces that invite people to stay and linger;

- Increase in vegetation: street trees and garden beds
- Convert the carpark space into a shared gathering area
- Add unique elements into the landscape i.e. coloured paving, artwork, play equipment

Ensure suitably shaded areas for the comfort and safety of travellers and residents;

- Increase street trees/trees on grassed areas
- Add hard elements to the landscape that provide shade: structures and seating

Enhance the safety and functionality between pedestrians and vehicles;

- Narrow the road both visually and physically: parklets, street trees, lamps/lighting

Define and improve off street parking facilities / community space;

- Increase the median area with more grassed space to create an outdoor community space
- Create formal parking lines
- Change floor material to indicate possible community space when park is not in use

Provide for the necessary tourist information and other facilities and assess connectivity between any existing historical/tourist landmarks;

- Create a connected trail from the notice board/pin-up board that could potentially present history and current way of life, and lead to all the historical/tourist landmarks of each town.

Amenity Improvements and Infrastructure projects to achieve the master plan

Enhance entry statements, signage and street furniture; and

- Incorporate the towns history & current farming into the sign, connecting the whole Shire
- Add sufficient shaded street furniture in parklets and outdoor community space

Encompass and promote historic and cultural values.

- 'Sense of community' related to farming with colours and hardworks relating back to the site
- 'Sense of community' related through clean and tidy streets encouraged with the emphasis on such elements, addition of bright bins to continue the tidy nature
- 'Sense of community' related to friendly residents further exposed with promotion of the hub and outdoor space, bringing together the community and tourists

Develop strategies with property owners and shop proprietors to improve building appearance and create vibrant shop fronts.

Improve the quality of appearance of public spaces with new street furniture, lighting, gardens and tree plantings, public art and opportunities for outdoor dining, fun and socialising.

LANDSCAPE OVERVIEW Nyabing Concept Masterplan A

Who we are... What we do... Who we represent...
What we want you to know about us...

Formalising light vehicle parking will...

- Make the outdoor space safer for those crossing;
- Visually narrow the road due to the street parking lines, thus slowing down traffic for safer movement across;
- Organises thus beautifies the carpark for more aesthetic purposes.

light vehicle parking

The increase in tree planting will...

- Provide more natural shade;
- Provide natural colour to the street;
- Visually narrows the road to encourage traffic to slow down.

proposed tree planting

By creating this main node, it will...

- Create easy access to and from the carpark/turfed area/hub;
- Visually draws the public in, encouraging movement through the area;
- Physically and visually narrows the road to slow down traffic.

main connective node

potential heavy vehicle area

By adding a heavy vehicle only area, it will...

- Increase safety within the carpark;
- Provide order to the area for easy access;
- Redirects the trucks to avoid heavy movement through the outdoor communal space.

blisters

The increase in tree planting will...

- Provide more natural shade;
- Provide natural colour to the street;
- Visually narrows the road to encourage traffic to slow down.

potential new shelters

Increasing shade structures will...

- Encourage people to stop and spend time in the town;
- Create shaded areas for the community during events.

footpath improvement

Improving the footpath will...

- Encourage movement throughout the town and street, exploring its amenities;
- Add ramps for accessibility;
- Create possible areas of colour to bring attention to the key connection points.

increased open turf area

The increase in turf area will...

- Provide a safe seating area for those passing by;
- Provide a safe seating area for the community to gather.

art elements

Incorporating art into the streetscape and landscape will...

- Create a want to stop off and explore the art pieces in the town;
- Encourage the children of the town to make their mark and to expose the culture within the town;
- Bring colour to the street.



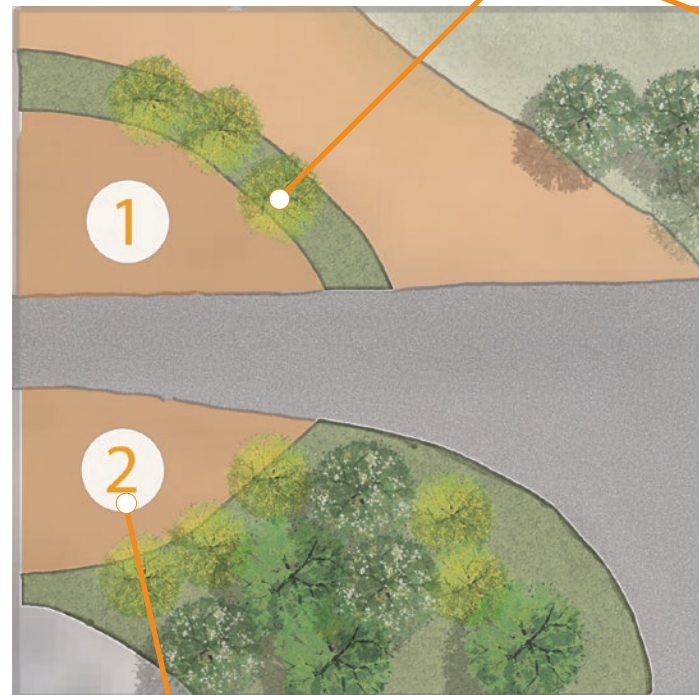
LANDSCAPE OVERVIEW Nyabing Concept Masterplan B C D

Who we are... What we do... Who we represent...
What we want you to know about us...

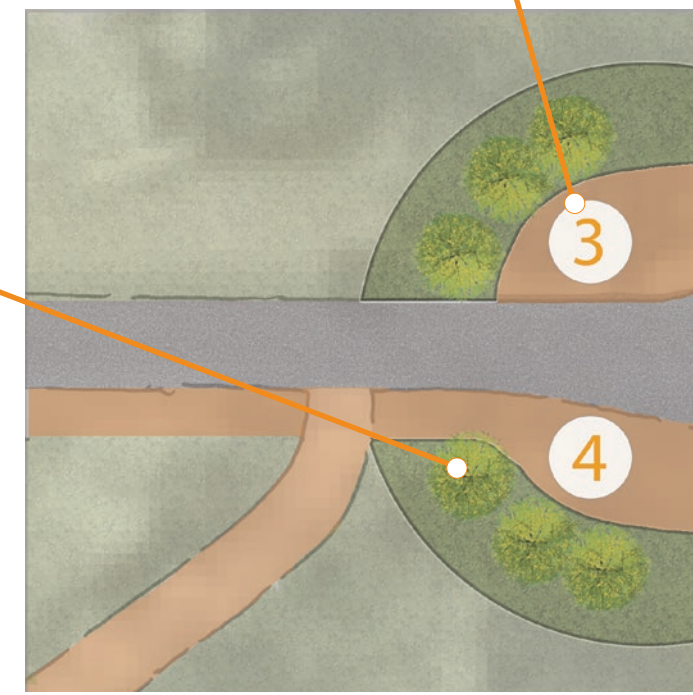
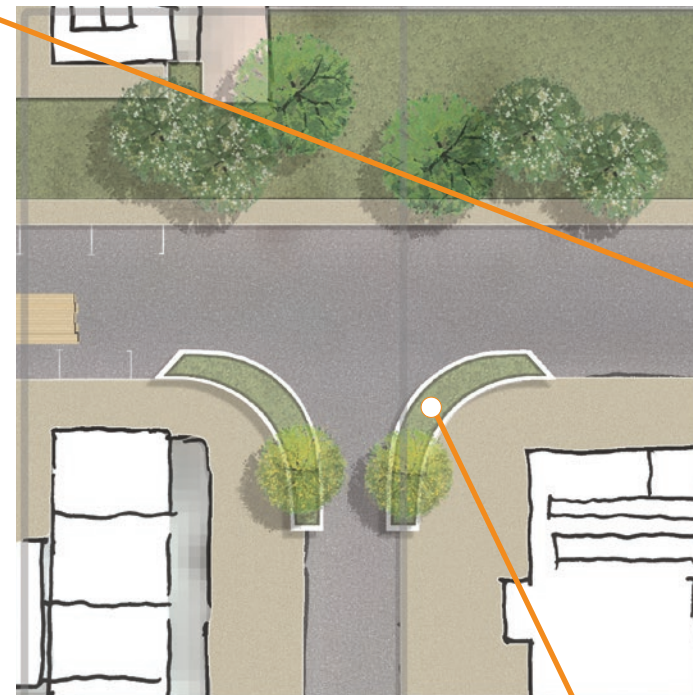
The key tree planting is located by the entrance to...

- Provide natural colour to the entrance.

key trees



entry statement locations



entry statement locations

The entrances, located in ideal spots to allow for the best viewing, contain shared elements of the Shire of Kent, as well as unique elements relating to Pingrup and Nyabing as the 2 towns they are.

- Hard elements
- Soft elements
- Combination

blisters

The use of blisters on the intersections of the streets will...

- Narrow the road in order to slow down traffic and create a safer main street;
- Increase shrubbery and tree canopy space within the street;
- Create possible seating and small gathering space on the path to get people to stay longer.

LANDSCAPE OVERVIEW Pingrup

Concept key design notes

VEGETATION

- Replace the current line of trees on the north of the main street with more colour set of street trees.
- Create nodes on the intersections that slow down traffic and provide seating, colourful shrubbery, and shade, creating small gathering spaces to make visitors and residents linger.
- Revegetate areas of baren land to beautify the street, while also guiding tourists into key attractions of the town i.e. the shed, caravan park, old school museum etc.
- Enlarging the turf area current residing north of the carpark, creating a green open space with shade from trees to invite tourists to park, gather, and explore the town, including its amenities.
- Add verge planting to the path, cooling down the hot path while also bringing colour to the street.
- Increase tree planting, with more key and colourful flowering trees on the nodes and blisters to draw attention to the key connection points.

ART/COLOUR

- Adding colourful trees near the entrance points, bringing attention to historical buildings while also catching attention to those coming down Albany Lake Grace road.
- Mural walls in and around the connection node, utilising space that brings a unique element into the town and encourages movement through the area.
- Add addition colour to the pathways where nodes of importance are i.e. crossing connctions to the other side of the street.

LIGHTING

- Use accent lighting on hisotical buildings/key attractions for night time attention.
- Accent trees of importance in the area.

ACCESSIBILITY/SAFETY

- Create formed pathway connection all sides of the street, with ramps for accessibility.
- By narrowing the road and showing clear connection nodes vehicles will be more inclined to slow down, thus making the street safer to cross.

GATHERING SPACE

- Increase shaded seating and structures in the grassed/caravan area, utilising what is already there but adding elements to beautify and encourage even more movement throughout.
- By formalising the carpark, it opens up and creates space for outdoor activities and gathering space, not minimising the area, but utilising it.

Who we are... What we do... Who we represent...
What we want you to know about us...



SK34-A

LANDSCAPE OVERVIEW Pingrup Concept Masterplan

Who we are... What we do... Who we represent...
What we want you to know about us...



Key design points that relate directly to Pingrup...

- Create more accessible and appealing pathways that encourage movement through the town, with additional vegetation to create an aesthetic and welcoming connection, while also lowering urban heat during the Summer.
- Enhancing the carpark and caravan entry area with signage, colour, shade and vegetation to indicate a key spot of interest to tourists.
- Low maintenance shrubbery that allows year-round vegetation and colour to create an aesthetic mainstreet, using vegetation to indicate key spots of interest to create a visual pull rather than an over use of signage.
- Create open spaces along the street to provide spots for the community to gather and interact with tourists, whether through additional green space defined by vegetation, or by formalising connections leading to areas of interest within the town.
- Increase coloured elements that represent both towns, from the Shires salt lakes, to the silks of the Pingrup Jockeys. Design in a way that utilises colour to expose elements of the town i.e. to indicate entries or points of significance, or to expose connections from the carpark to the shops e.t.c.
- Addition of lights, whether using hard elements or accent lighting to provide a unique indicator of the key sites of the towns i.e. the old school, the Salmon gums, old farming equipment, the entry statements e.t.c.

Provide opportunities (workshops/surveys etc) for the community, existing community groups and key stakeholders to contribute towards the development of Main Street Enhancement Plan for the towns of Nyabing and Pingrup;

Provide adequate landscaping and streetscaping to both towns to create attractive spaces that invite people to stay and linger;

- Increase in vegetation: street trees and garden beds
- Convert the carpark space into a shared gathering area
- Add unique elements into the landscape i.e. coloured paving, artwork, play equipment

Ensure suitably shaded areas for the comfort and safety of travellers and residents;

- Increase street trees/trees on grassed areas
- Add hard elements to the landscape that provide shade: structures and seating

Enhance the safety and functionality between pedestrians and vehicles;

- Narrow the road both visually and physically: parklets, street trees, lamps/lighting

Define and improve off street parking facilities / community space;

- Increase the median area with more grassed space to create an outdoor community space
- Create formal parking lines
- Change floor material to indicate possible community space when park is not in use

Provide for the necessary tourist information and other facilities and assess connectivity between any existing historical/tourist landmarks;

- Create a connected trail from the notice board/pin-up board that could potentially present history and current way of life, and lead to all the historical/tourist landmarks of each town.

Amenity Improvements and Infrastructure projects to achieve the master plan

Enhance entry statements, signage and street furniture; and

- Incorporate the towns history & current farming into the sign, connecting the whole Shire
- Add sufficient shaded street furniture in parklets and outdoor community space

Encompass and promote historic and cultural values.

- 'Sense of community' related to farming with colours and hardworks relating back to the site
- 'Sense of community' related through clean and tidy streets encouraged with the emphasis on such elements, addition of bright bins to continue the tidy nature
- 'Sense of community' related to friendly residents further exposed with promotion of the hub and outdoor space, bringing together the community and tourists

Develop strategies with property owners and shop proprietors to improve building appearance and create vibrant shop fronts.

Improve the quality of appearance of public spaces with new street furniture, lighting, gardens and tree plantings, public art and opportunities for outdoor dining, fun and socialising.

LANDSCAPE OVERVIEW Pingrup Concept Masterplan A

Who we are... What we do... Who we represent...
What we want you to know about us...

increased open turf area

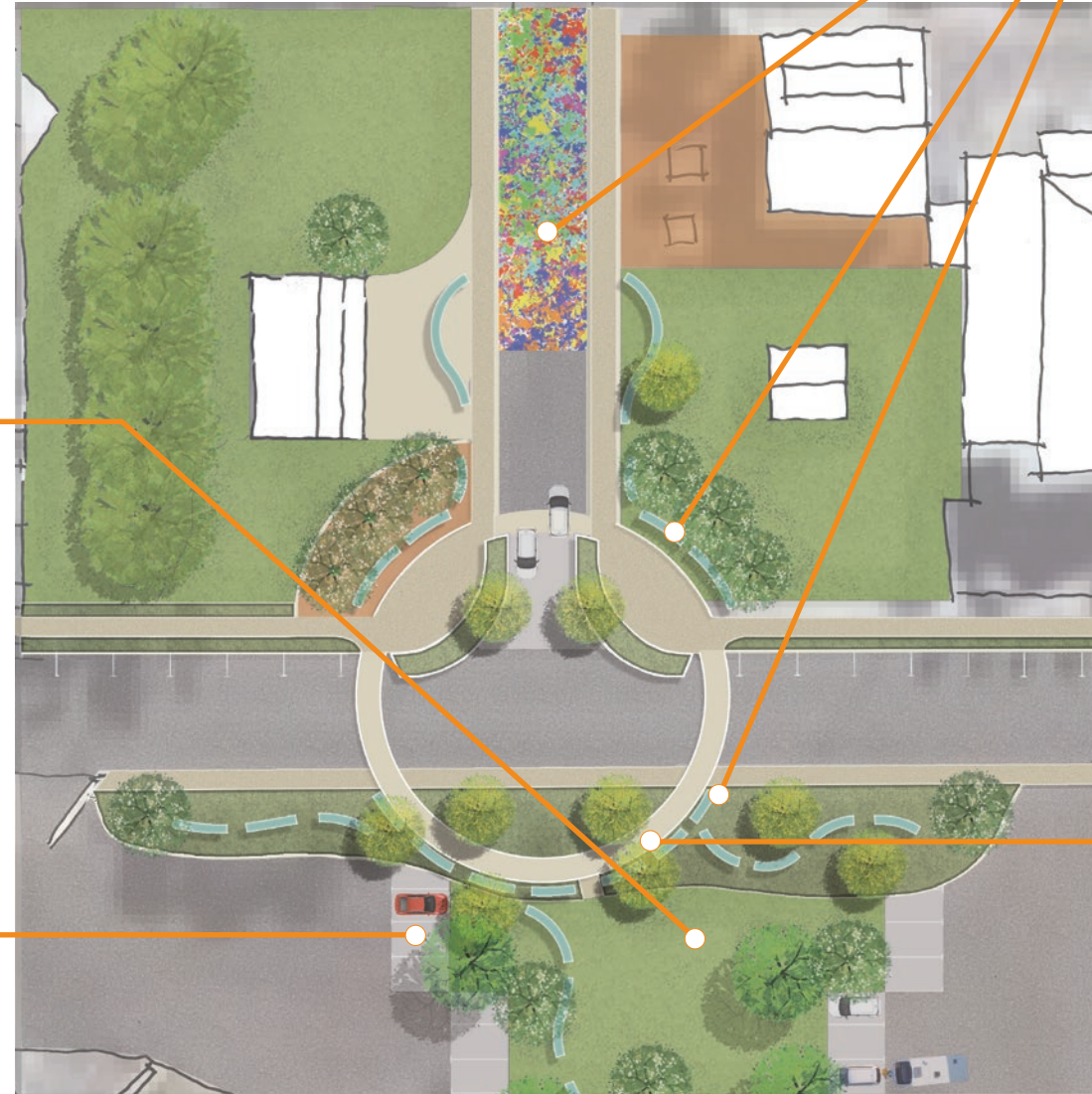
The increase in turfed area will...

- Provide a safe seating area for those passing by;
- Provide a safe seating area for the community to gather.

light vehicle parking

Formalising light vehicle parking will...

- Make the outdoor space safer for those crossing;
- Allows for open space to be made for gathering;
- Beautifies the carpark for more aesthetic purposes and creates a welcoming area to stop during travel.



art elements

Incorporating art into the streetscape and landscape will...

- Create a want to stop off and explore the art pieces in the town;
- Encourage the children of the town to make their mark and to expose the culture within the town;
- Bring colour to the street;
- Connect to the Silo art.

main connective node

By creating this main node, it will...

- Create easy access to and from the carpark, turfed area, Community Centre and old school;
- Visually draws the public in, encouraging movement through the area;
- Physically and visually narrows the road to slow down traffic.

LANDSCAPE OVERVIEW Pingrup Concept Masterplan B C D

Who we are... What we do... Who we represent...
What we want you to know about us...

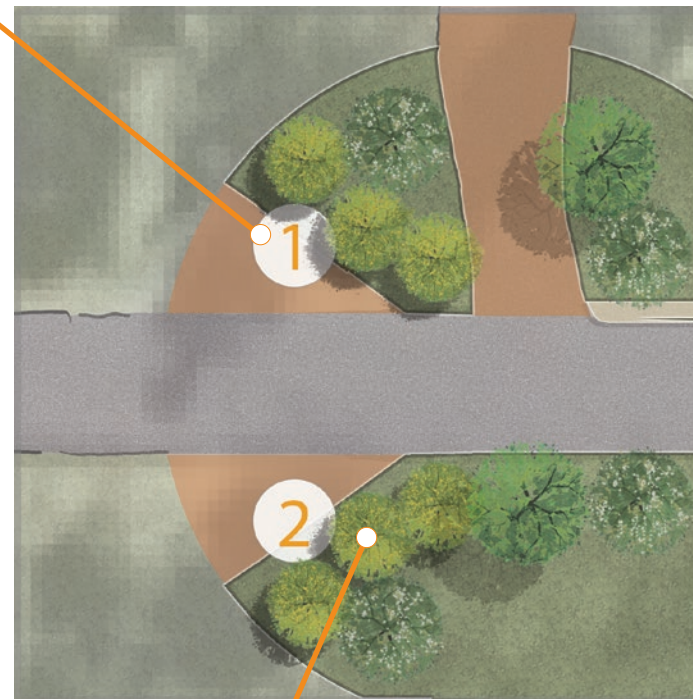
The entrances, located in ideal spots to allow for the best viewing, contain shared elements of the Shire of Kent, as well as unique elements relating to Pingrup and Nyabing as the 2 towns they are.

- Hard elements
- Soft elements
- Combination

entry statement locations



footpath improvement



key trees

The key tree planting is located by the entrance to...

- Provide natural colour to the entrance.

proposed tree planting

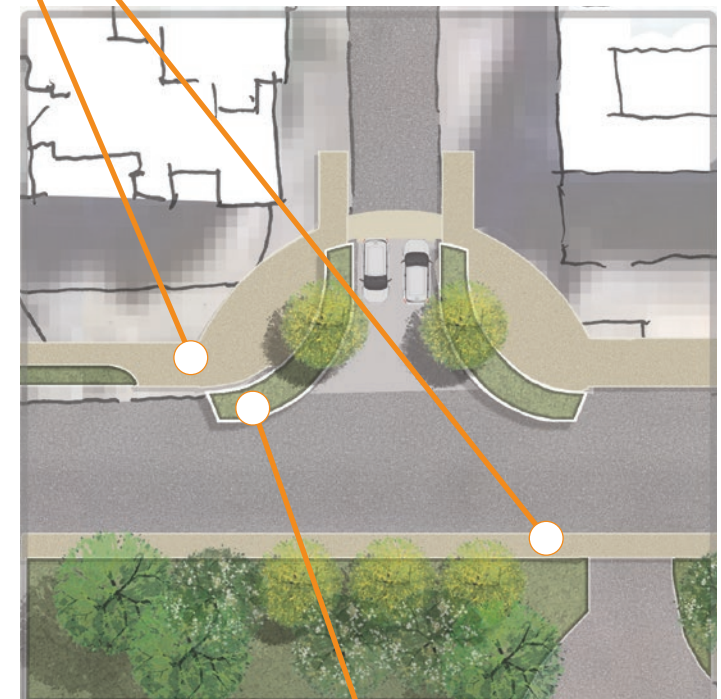
The increase in tree planting will...

- Provide more natural shade;
- Provide natural colour to the street;
- Visually narrows the road to encourage traffic to slow down.

footpath improvement

Improving the footpath will...

- Encourage movement throughout the town and street, encouraging people to explore its amenities;
- Add ramps for accessibility;
- Create possible areas of colour to bring attention to the key connection points.



blisters

The use of blisters on the intersections of the streets will...

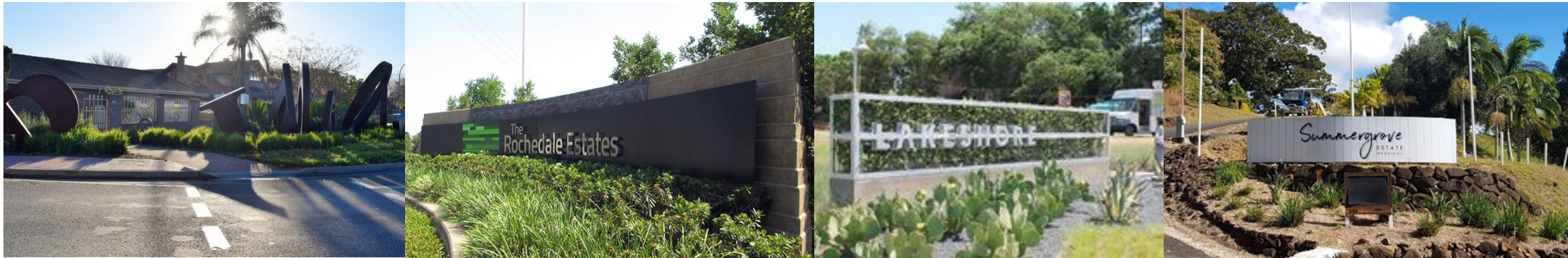
- Narrow the road in order to slow down traffic and create a safer main street;
- Increase shrubbery and tree canopy space within the street;
- Create possible seating and small gathering space on the path to get people to stay longer.

ENTRY STATEMENT concept

Who we are... What we do... Who we represent...
What we want you to know about us...



PREDOMINATELY HARD
STRUCTURE



PREDOMINATELY SOFT
STRUCTURE



COMBINATION OF PLANTING
& HARD STRUCTURE