



Shires of Dumbleyung, Kent, and Lake Grace

Lakes Combined

Local Emergency Management Arrangements

These arrangements have been produced and issued under the authority of section. 41(1) of the *Emergency Management Act 2005*, endorsed by the Combined Lakes Local Emergency Management Committee and the Council of the Shires of Dumbleyung, Kent, and Lake Grace. The Arrangements have been tabled for noting with the Great Southern District Emergency Management Committee and State Emergency Management Committee.

_____	_____
Chair/s Combined Lakes LEMC	Date
Endorsement by Council	Date
Shire of Dumbleyung Resolution _____	_____
Shire of Kent Resolution _____	_____
Shire of Lake Grace Resolution _____	_____

Table of Contents

Foreword	4
Distribution List	4
Amendment Record.....	5
Version Control	5
Glossary of Terms	6
Acronyms	12
1. Introduction	14
1.1 Community Consultation	14
1.2 Document Availability	14
1.3 Aim	14
1.4 Purpose	14
1.5 Scope	15
1.5.1 Geographic Area Covered	15
1.6 Related Documents and Arrangements	20
1.6.1 Local Emergency Management Policies	20
1.6.2 Local Plans & Arrangements	20
1.6.3 Agreements, understandings and commitments	22
1.6.4 Special Considerations.....	23
2. Resources, Roles and Responsibilities.....	27
2.1 Local Resources	27
2.2 Local Roles and Responsibilities	27
2.3 LEMC Roles and Responsibilities.....	28
2.4 Agency Roles and Responsibilities	29
3. Emergency Risk Management	31
3.1 Description of emergencies likely to occur	31
3.2 Emergency management strategies and priorities.....	32
4. Coordination of Emergency Operations	33
4.1 Incident Support Group.....	33
4.1.1 Triggers for an ISG.....	33
4.1.2 Membership of an ISG	33
4.1.3 Frequency of ISG Meetings	33
4.1.4 Location of ISG Meetings	34

4.2 Media Management and Public Information	34
4.2.1 Public warning systems	34
4.2.2 Local Systems	34
4.3 Funding Arrangements	36
4.4 Evacuation Arrangements	36
4.4.1 Evacuation centres	37
4.4.2 Evacuation of animals	37
4.4.3 At-risk groups	37
4.5 Routes and Maps	37
4.6 Emergency Relief and Support.....	37
4.6.1 Local Evacuation Centre Coordinator	37
4.6.2 Local Government Liaison Officer	38
4.6.3 Register.Find.Reunite	38
5. Recovery	39
5.1 Local recovery coordinator.....	39
6. Exercising, Reviewing and Reporting Arrangements.....	40
6.1 Exercise Local Emergency Management Arrangements	40
6.1.1 The Aim of Exercising	40
6.1.2 Frequency of Exercises	40
6.1.3 Types of <i>Exercises</i>	40
Reporting of Exercises	40
6.2 Review Local Emergency Management Arrangements	41
6.2.1 Review of Local Emergency Management Committee positions	41
6.2.2 Review of resources register	41
6.3 Annual Reporting	41
Appendices.....	42
Appendix A: Critical Infrastructure	42
Appendix B: At-Risk Groups Register	55
Appendix C: Risk Register	59
Appendix D: Resource Register	77
Appendix E: Evacuation Centre Information	80
Appendix F: Map of the District.....	82
Appendix G: Contacts	85

Foreword

Distribution List

Organisation	Number of copies
Shire Administration – Dumbleyung, Kent and Lake Grace	1
Shire President – Dumbleyung, Kent and Lake Grace	1
Shire Website – Dumbleyung, Kent and Lake Grace	1
Western Australia Police Force – Dumbleyung, Katanning, Lake Grace, Ravensthorpe, Gnowangerup, Jerramungup, Kulin	1
Shire Chief Bushfire Control Officer – Dumbleyung, Kent and Lake Grace	1
Shire Deputy Chief Bushfire Control Officer – Dumbleyung, Kent and Lake Grace	
St John Ambulance Western Australia – Dumbleyung Sub Centre, Kent Sub Centre, Lake Grace Sub Centre, Newdegate Sub Centre, Varley Sub Centre, Lake King Sub Centre	1
Volunteer Fire & Rescue Service (VFRS) – Dumbleyung and Lake Grace.	1
Western Australia Country Health – Dumbleyung and lake Grace Hospitals; Kukerin Health Centre	1
Department of Fire and Emergency Services – Upper Great Southern (Narrogin); and, Great Southern (Albany).	1
Department of Communities – Katanning and Northam	1
Department of Education – Wheatbelt Regional office (Northam) and Goldfields-Regional Office (Kalgoorlie); Dumbleyung Primary School, Kukerin Primary School, Nyabing Primary School, Pingrup Primary School, Lake Grace District High School, Newdegate Primary School, Lake King Primary School.	1
Local Emergency Management Committee Members	1
Department of Biodiversity, Conservation & Attractions - Narrogin	1
Department of Primary Industry and Regional Development – Katanning; and Narrogin.	1
Western Power	1
Arc Infrastructure	1
Water Corporation	1
Telstra Regional	1
Main Roads WA	1
Neighbouring Shires (Wickepin, Wagin, Woodanilling, Katanning, Gnowangerup, Jerramungup, Kulin, Kondinin, Dundas, Esperance, and Ravensthorpe)	1
Co-operative Bulk Handling (CBH) – Dumbleyung, Holland Rocks, Kukerin, Lake Grace, Newdegate; and Pingaring (Area 14, Albany Zone); Esperance; Nyabing and	1

Organisation	Number of copies
Pingrup (Area 15, Albany Zone); Dunn Rock, Lake King; Mount Madden and Varley (Area 18, Esperance Zone)	
District Emergency Management Advisor – Upper Great Southern	1
Upper Great Southern DEMC	1

Amendment Record

Date	Amendment summary	Author
02/06/2025	Development of initial Combined LEMA (v.0.1)	B.Slater [Krisis Consultancy]
13/10/2025	Final Combined LEMA (v1.0)	B.Slater [Krisis Consultancy]

Suggestions and comments from the community and stakeholders can help improve these arrangements. Feedback can include:

- What you like or don't like about the arrangements;
- Unclear or incorrect expression;
- Out of date information or practices;
- Inadequacies; and
- Errors, omissions or suggested improvements.

To forward feedback, copy the relevant section, mark the proposed changes and forward to:

Chairperson Dumbleyung Local Emergency Management Committee C/- Shire of Dumbleyung PO Box 99 Dumbleyung WA 6350 ceo@dumbleyung.wa.gov.au	Chairperson Kent Local Emergency Management Committee C/- Shire of Kent PO Box 15 Kent WA 6341 ceo@kent.wa.gov.au	Chairperson Lake Grace Local Emergency Management Committee C/- Shire of Lake Grace PO Box 50 Lake Grace WA 6353 ceo@lakegrace.wa.gov.au
---	---	---

The Chairperson will refer any correspondence to the LEMC for consideration and/or approval. Amendments promulgated are certified in the following table, when updated.

Version Control

Document Title	Combined Lakes Local Emergency Management Arrangements
Document Version	Version 1.0 2025
Date Finalised	October 2025
Date of Review	October 2030

Glossary of Terms

Terminology used throughout this document has the meaning as prescribed in either section 3 of the *Emergency Management Act 2005* or as defined in the [State EM Glossary](#) or the [WA Emergency Risk Management procedure](#).

Accident: a sudden event in which harm is caused to people, property or the built or natural environment. See *also* [incident](#) and [emergency](#).

AIIMS: see [Australasian Interservice Incident Management System](#).

AIIMS structure: the combination of facilities, equipment, personnel, procedures and communications operating within a common organizational structure with responsibility for the management of allocated resources to effectively accomplish stated objectives relating to an incident (AIIMS).

Alert: that period when it is believed that resources may be required which enables an increased level of preparedness. See *also* [warning](#).

Assembly area: a designated location used for the assembly of emergency-affected persons. The area may also incorporate an emergency relief centre. A prearranged, strategically placed area, where support response personnel, vehicles and other equipment can be held in readiness for use during an emergency.

Assets: anything valued by people which includes houses, crops, forests and in many cases the environment.

Australasian Interservice Incident Management System (AIIMS): a nationally adopted structure to formalise a coordinated approach to emergency incident management.

Authorised officer: (a) the State Emergency Coordinator and (b) a person authorised under Section 61 of the *Emergency Management Act 2005*.

Authorised person: a person authorised by legislation to utilise a range of powers conferred by that legislation.

Available resources: at an incident and available for allocation at short notice. See *also*, [resources](#).

Briefing: the process of advising personnel of the details of the incident or event with which they will deal. See *also* [debriefing](#).

Bushfire: a fire involving grass, scrub or forest. Synonymous with 'wildfire'.

Bushfire Management: all those activities directed to prevention, detection, damage mitigation and suppression of bushfires. Includes bushfire legislation, policy, administration, law enforcement, community education, training of fire fighters, planning, communications systems, equipment research and the multitude of field operations undertaken by land managers and emergency services personnel relating to bushfire control.

Combat: to take steps to eliminate or reduce the effects of an incident upon the community.

Combat Agency: a combat agency prescribed under subsection (1) of the *Emergency Management Act 2005* is to be a public authority or other person who or which, because of the agency's functions under any written law or specialized knowledge, expertise and resources, is responsible for performing an emergency management activity prescribed by the regulations in relation to that agency.

Command: the direction of members and resources of an organisation in the performance of the organisation's role and tasks. Authority to command is established in legislation or by agreement with an organisation. Command relates to organisations and operates vertically within an organisation. See also [control](#) and [coordination](#).

Communications plan: details the methods and systems for people to communicate with each other, the incident management structure, including the actual radio channels/mobile phone numbers.

Community: a group with a commonality of association and generally defined by location, shared experience, or function. A social group which has a number of things in common, such as shared experience, locality, culture, heritage, language, ethnicity, pastimes, occupation, workplace, etc.

Control: the overall direction of emergency management activities in an emergency situation. Authority for control is established in legislation or in an emergency plan and carries with it the responsibility for tasking and coordinating other organisations in accordance with the needs of the situation. Control relates to situations and operates horizontally across organisations. See also [command](#) and [coordination](#).

Controlling Agency: an agency nominated to control the response activities to a specified type of emergency.

Coordination: the bringing together of organisations and elements to ensure an effective response, primarily concerned with the systematic acquisition and application of resources (organisation, manpower and equipment) in accordance with the requirements imposed by the threat or impact of an emergency. Coordination relates primarily to resources, and operates, vertically, within an

organisation, as a function of the authority to command, and horizontally, across organisations, as a function of the authority to control. See *also* [control](#) and [command](#).

Debrief (operational debrief): a meeting at the end of an operation with the purpose of assessing the conduct or results of an operation.

Debriefing: the process of sharing the good and bad points of the response to an incident as a means to improving any future planning and responses.

Disaster: see [emergency](#).

Disaster area: a geographical part of the State or Territory in which a state of emergency or disaster exists.

Disaster management: the body of policy and administrative decisions and operational activities which pertain to the various stages of a disaster at all levels. See *also* [emergency management](#).

District: means an area of the State that is declared to be a district under Section 2.1 *Local Government Act 1995*.

Emergency: the occurrence or imminent occurrence of a hazard which is of such a nature or magnitude that it requires a significant and coordinated response.

Emergency area: the area to which an emergency situation declaration or a state of emergency declaration applies.

Emergency centre: a facility where the coordination of the response and support to the incident is provided.

Emergency management: the management of the adverse effects of an emergency including:

- prevention – the mitigation or prevention of the probability of the occurrence of, and the potential adverse effects of, an emergency;
- preparedness – preparation for response to an emergency;
- response – the combating of the effects of an emergency, provision of emergency assistance for casualties, reduction of further damage, and help to speed recovery; and
- recovery – the support of emergency affected communities in the reconstruction and restoration of physical infrastructure, the environment and community, psychosocial and economic wellbeing.

Emergency risk management: a systematic process which contributes to the wellbeing of communities and the environment. The process considers the likely effects of hazardous events and the controls by which they can be minimised.

Emergency situation: a declaration made under section 50 of the *Emergency Management Act 2005*, by a Hazard Management Agency or the State Emergency Coordinator, which provides access to additional emergency management powers.

Evacuation: the planned relocation of persons from dangerous or potentially dangerous areas to safer areas and eventual return.

Evacuation centre: a centre that provides affected people with basic human needs including accommodation, and water. In addition, to enhance the recovery process, other welfare / recovery services should also be provided. See *also* [assembly area](#).

Event: an incident or situation, which occurs in a particular place during a particular interval of time.

Exercise: simulation of emergency management events, through discussion or actual deployment of personnel, in order: to train personnel; to review/test the planning process or other procedures; to identify needs and/or weaknesses; to demonstrate capabilities; and to practice people in working together.

Hazard: an event, situation or condition that is capable of causing or resulting in loss of life, prejudice to the safety, or harm to the health of persons or animals; or destruction of, or damage to property or any part of the environment and is defined in the *Emergency Management Act 2005* or prescribed in the *Emergency Management Regulations 2006*.

Hazard Management Agency (HMA): a public authority, or other person, prescribed by the *Emergency Management Regulations 2006* to be a hazard management agency for emergency management, or an aspect of emergency management, of a hazard.

Impact area: any area which is likely to bear, is bearing, or has borne the full impact of any disaster and in which major lifesaving operations are necessary.

Incident: the occurrence or imminent occurrence of a hazard. See *also* [accident](#) and [emergency](#).

Incident Controller: the person designated by the relevant Controlling Agency, to be responsible for the overall management and control of an incident within an incident area and the tasking of agencies in accordance with the needs of the situation. [Note: Agencies may use different terminology, however, the function remains the same].

Incident management: the process of controlling the incident and coordinating resources.

Incident Management Team (IMT): a group of incident management personnel comprising the incident controller, and the personnel he or she appoints to be responsible for the functions of

operations, planning and logistics. The team headed by the incident controller which is responsible for the overall control of the incident.

Incident Support Group (ISG): a group of agency/organisation liaison officers convened by the Incident Controller to provide agency specific expert advice and support in relation to operational response to the emergency.

Local Emergency Management Committee (LEMC): a local emergency management committee established under section 38 of the *Emergency Management Act 2005*.

Local Emergency Coordinator (LEC): In addition to the role as a Deputy Chair, which may be shared between LECs, the LEC for a local government district has the following functions (section 37(4) of the EM Act) to provide advice and support to the LEMC for the district in the development and maintenance of emergency management arrangements; to assist hazard management agencies in the provision of a coordinated response during an emergency; and, to carry out other EM activities in accordance with the directions of the State Emergency Coordinator.

Local Recovery Coordinator (LRC): The Local Recovery Coordinator provides support to the LEMC by ensuring the preparation, maintenance and exercising of the Local Recovery Plan, as part of the LEMA; providing advice and generating awareness of recovery; and, advising the LEMC of Local Recovery Coordination Group (LRCG) local recovery activities, and evaluation findings.

Local Recovery Coordination Group (LRCG): The LRCG is to coordinate and support local management of the recovery process by assessing the consequences of the event and coordinating recovery activities to rebuild, restore and rehabilitate the social, built, economic and natural environments within the community during an emergency event.

Multi-agency response: an incident of high fire incidence over short periods of time in any administrative unit, usually overtaxing the normal initial attack capability of the unit.

Natural 'hazard' disaster: any emergency defined by the Commonwealth for the purposes of the Natural Disaster Relief Arrangements; including bushfire, earthquake, flood, storm, cyclone, storm surge, landslide, tsunami, meteorite strike, tornado.

Operational area (OA): the area defined by the Operational Area Manager for which they have overall responsibility for the strategic management of an emergency. This area may include one or more Incident Areas.

Plan: a formal record of agreed emergency management roles, responsibilities, strategies, systems, and arrangements. See *also* [emergency plan](#).

Preparedness: preparation for response to an emergency.

Prevention: the mitigation or prevention of the probability of the occurrence of, and the potential adverse effects of, an emergency.

Probability: the likelihood of a specific outcome, measured by the ratio of specific outcomes to the total number of possible outcomes. Probability is expressed as a number between 0 and 1, with 0 indicating an impossible outcome and 1 indicating an outcome is certain.

Public Authority:

- an agency as defined in the *Public Sector Management Act 1994*;
- a body, corporate or unincorporated that is established or continued for a public purpose by the State, regardless of the way it is established;
- a local government or regional local government;
- the Police Force of Western Australia;
- a member or officer of a body referred to in one of the above; or
- a person or body prescribed (or of a class prescribed) by the regulations as a public authority for the purposes of this definition.

Recovery: the support of emergency affected communities in the reconstruction and restoration of physical infrastructure, the environment and community, psychosocial and economic wellbeing” (s. 3 EM Act). Recovery requires a coordinated process to effectively support communities impacted by an emergency across the social, built, economic and environmental recovery environments.

Recovery management: (principles of) successful recovery relies on:

- understanding the context;
- recognising complexity;
- using community-led approaches;
- ensuring coordination of all activities;
- employing effective communication; and
- acknowledging and building capacity.

Relief: the provision of immediate shelter, life support and human needs to persons affected by, or responding to, an emergency. It includes the establishment, management and provision of services to emergency relief centres.

Resources: all personnel and equipment available, or potentially available, for incident tasks.

Response: the combatting of the effects of an emergency, provision of emergency assistance for casualties, reduction of further damage, and help to speed recovery.

Risk: a concept used to describe the likelihood of harmful consequences arising from the interaction of hazards, communities and the environment.

- The chance of something happening that will have an impact upon objectives. It is measured in terms of consequences and likelihood;
- A measure of harm, taking into account the consequences of an event and its likelihood. For example, it may be expressed as the likelihood of death to an exposed individual over a given period; and
- Expected losses (of lives, persons injured, property damaged, and economic activity disrupted) due to a particular hazard for a given area and reference period. Based on mathematical calculations, risk is the product of hazard and vulnerability.

Risk assessment: the overall process of risk identification, risk analysis and risk evaluation.

Risk management: coordinated activities of an organisation to direct and control risk.

Risk treatment: process of selection and implementation of measures to modify risk. The term “risk treatment” is sometimes used for the controls themselves.

Support Organisation: a public authority or other person who or which, because of the agency’s functions under any written law or specialized knowledge, expertise and resources are responsible for providing support functions in relation to that agency.

Vulnerability: the characteristics and circumstances of a community, system or asset that make it susceptible to the damaging effects of a hazard. There are many aspects of vulnerability, arising from various physical, social, economic, and environmental factors that vary within a community and over time.

Welfare: the provision of immediate and continuing care of emergency affected persons who may be threatened, distressed, disadvantaged, homeless or evacuated; and the maintenance of health, well-being and prosperity of such persons with all available community resources until their rehabilitation is achieved.

Welfare centre: location where temporary accommodation is available for emergency affected persons containing the usual amenities necessary for living and other welfare services as appropriate. See also Evacuation centre.

Acronyms

General acronyms used in these arrangements.

Acronym	Term
BFS	Bush Fire Service
CEO	Chief Executive Officer

Acronym	Term
Communities	Department of Communities
DBCA	Department of Biodiversity, Conservation and Attractions
DEMC	District Emergency Management Committee
ECC	Emergency Coordination Centre
EM	Emergency Management
DFES	Department of Fire and Emergency Services
HMA	Hazard Management Agency
ISG	Incident Support Group
LEC	Local Emergency Coordinator
LEMA	Local Emergency Management Arrangements
LEMC	Local Emergency Management Committee
LGA	Local Government Area
LRC	Local Recovery Coordinator
LRCG	Local Recovery Coordination Group
SEC	State Emergency Coordinator
SEMC	State Emergency Management Committee
SES	State Emergency Service
SEWS	Standard Emergency Warning Signal
SOP	Standard Operating Procedures

Table 1: Acronyms

1. Introduction

1.1 Community Consultation

In August 2024 the Shires of Dumbleyung, Kent, and Lake Grace resolved to form a Combined Local Emergency Management Committee [LEMC], as provided for under s.38 (1) of the EM Act 2005, and the State Emergency Management (EM) Preparedness Procedure 3.7.

The Combined LEMC was resolved via ordinary meeting by the:

- Shire of Dumbleyung Council on 15 August 2024;
- Shire of Kent Council on 21 August 2024; and,
- Shire of Lake Grace Council on 28 August 2024.

The process to combine these emergency management arrangements was commenced in March 2025, with a series of community-based risk assessment workshops facilitated across each of the Local Government Areas. From this risk management approach, the data identified was used as a foundation to develop these Combined Lakes Local Emergency Management Arrangements.

1.2 Document Availability

Copies of these arrangements are available on the websites of each of the local government , and shall be made available free of charge during office hours:

	Shire of Dumbleyung	Shire of Kent	Shire of Lake Grace
Administration Office	32 Harvey Street Dumbleyung Western Australia 6350	24 Richmond Street Nyabing Western Australia 6341	1 Bishop Street Lake Grace Western Australia 6353
Website	www.dumbleyung.wa.gov.au	www.kent.wa.gov.au	www.lakegrace.wa.gov.au
Agency / Organisation Stakeholders	Distributed per Appendix G Contacts.	Distributed per Appendix G Contacts.	Distributed per Appendix G Contacts.

1.3 Aim

The aim of the Combined Lakes Local Emergency Management Arrangements is to detail emergency management arrangements for the district and ensure an understanding between agencies and stakeholders involved in managing emergencies within the Shire.

1.4 Purpose

The purpose of these emergency management arrangements is to set out:

- a) the local government’s policies for emergency management;
- b) the roles and responsibilities of public authorities and other persons involved in emergency management in the local government district;

- c) provisions about the coordination of emergency operations and activities relating to emergency management performed by the persons mentioned in paragraph b);
- d) a description of emergencies that are likely to occur in the local government district;
- e) strategies and priorities for emergency management in the local government district;
- f) other matters about emergency management in the local government district prescribed by the regulations; and
- g) other matters about emergency management in the local government district the local government considers appropriate. (s.41(2) of the *Emergency Management Act 2005* (EM Act)).

1.5 Scope

These arrangements are to ensure the community is prepared to deal with the identified emergencies should they arise. It is not the intent of this document to detail the procedures for HMAs in dealing with an emergency. These should be detailed in the HMAs' individual plans.

Furthermore:

- This document applies to the local government districts of the Shires of Dumbleyung, Kent, and Lake Grace.
- This document covers areas where the Shires of Dumbleyung, Kent, and Lake Grace provides support to HMAs in the event of an incident.
- This document details the Shires of Dumbleyung, Kent, and Lake Grace capacity to provide resources in support of an emergency, while still maintaining business continuity; and the Shires of Dumbleyung, Kent, and Lake Grace responsibilities in relation to recovery management.

These arrangements are to serve as a guideline to be used at the local level. Incidents may arise that require action or assistance from district, state or federal level.

1.5.1 Geographic Area Covered

There are three separate areas covered under these arrangements, with these the LGAs of the Shires of Dumbleyung, Kent, and Lake Grace.

Shire of Dumbleyung

Geography

The Shire of Dumbleyung is located approximately 270 Kilometres southeast of Perth. It is approximately 67 Kilometres long and 51 Kilometres wide, giving a total area of 2550 square Kilometres. It is surrounded by neighbouring shires of Lake Grace (eastern boundary), Wickepin and Kulin (northern boundary), Woodanilling, Katanning and Kent (southern boundaries) and Wagin (western boundary).

Topography and Vegetation

The general topography of the Shire consists of gradually undulating terrain with iron stone outcrops in the form of flat top hills. The average altitude is 258 metres to 274 metres. The area is drained by a complex of creek waterways which run from the Dongolocking Creek and Cobline Creek into the Cobline River which in turn runs into the Dumbleyung Lake. The lake covers an area of 51.8 square kilometres and is of saltwater content. Vegetation is mainly trees in natural bush belts of mallee, salmon and jam, with the bulk of the area under crop cultivation and grazing.

Climate

The climate varies from a dry, hot summer to cold and usually wet winter. Summer temperatures vary from 30 degrees to 40 degrees and winter temperatures can drop to -2 degrees overnight with a daytime temperature of 10 to 20 degrees.

Population

Total population of the Shire is 681 (data from the 2021 census). The townsite of Dumbleyung has a population of 290 and the townsite of Kukerin has a population of 70. The remainder of the population is made up of the farming community.

Infrastructure

The area is accessible by road, rail and light air transport.

- **Road:** Road accessibility from Perth via the Albany Highway is 270 Kilometres and via Brookton and Narrogin is 285 Kilometres. The Shire is located on the Roelands - Lake King Road approximately 70 Kilometres east of the Albany Highway.
- **Rail:** The Shire is accessible by rail via Wagin. The rail system is solely in place to move grain from bulk handling facilities.
- **Air:** Air accessibility is available by landing at the Dumbleyung or Kukerin airstrips. The Dumbleyung strip is an all-weather strip with night landing lights. Royal Flying Doctor Service utilise the Dumbleyung Airstrip for patient attendance and pick up but only for daytime operations.

Only parts of the Shire, including both townsites are connected to the Public Water Supply drawn from Harris River near Collie. The remainder of the Shire relies on annual rainfall to supply private tanks and dams. Electricity is supplied to the entire area via the State supply South West Interconnected System (SWIS) grid maintained and operated by Western Power in Narrogin and Katanning. 80% of the Dumbleyung townsite is serviced by the local sewerage plant. The sewerage plant is located on the southern edge of Dumbleyung townsite and owned and operated by the Shire of Dumbleyung. Kukerin is serviced by septic systems to each dwelling. Dwellings on farms are serviced by septic systems.

Telephone is the main communication network throughout the plan area, and this network is maintained by Telstra. Secondary networks of radio communications exist and are operated by emergency services, local government authorities and private companies. Citizen band radio communication is widespread throughout the rural sector operated by rural land holders.

A map of the Shire of Dumbleyung can be found in Appendix F – Map of the District.

Shire of Kent

Geography

The Shire of Kent is in the Great Southern Region of Western Australia and is just over 300km southeast of Perth, 187 kilometres north-northeast of Albany and 60 kilometres east of Katanning. The Shire covers an area of 5634 square kilometres and is predominantly made up of agricultural lands producing sheep, wheat, barley, canola and other grains and legumes. The Shire is bordered by the shires of Dumbleyung, Gnowangerup, Jerramungup, Lake Grace and Katanning.

Topography and Vegetation

The agricultural areas of Western Australia are very diverse, with a wide range of soils, and landscape features. In the Shire of Kent, the area is moderately flat with some areas of hills and rocky outcrops. The maximum elevation is approximately 410m (1348 ft) with a minimum of approximately 280m. The main landscape feature within the Shire is the lake systems that runs through the middle of the Shire. Native vegetation in the Shire has a history of being highly cleared for agricultural area resulting in remaining vegetation being highly fragmented and generally referred to as Mallee Heath/Shrublands of differing species.

Climate

The Shire is described as having a Mediterranean climate with cool, wet winters and hot dry summers. The Shire experiences its hottest temperatures in the summer months of November through to February; however, it is not uncommon for these temperatures to carry over to early March. Average max temperatures from November through to March are well over 35°C. The winter months can be quite cold and frosty with minimum temperatures below 0°C being recorded in Nyabing from May through to November and Pingrup in August through to October. Annual average rainfall for the shire is 344mm. The wettest months are May through September however rainfall does typically occur from February all the way through to October, with November to February being drier with some summer rainfall recorded.

Population

The principal centres of the Shire are the towns of Nyabing, 319km southeast of Perth and Pingrup, a further 40km east of Nyabing. Most of the people who live in the Shire do not live in the townships. According to the ABS 2021 Census the total population of the Shire is 494.

Infrastructure

The area is accessible by road and light air transport.

- **Road:** Key transport links within the Shire include the Nyabing-Pingrup Road, Katanning-Nyabing Road and Pingrup-Lake Grace Road with Chester Pass Road, Datatine Road (Dumbleyung-Nyabing Road) and Newdegate-Pingrup Road being important grain transport routes. The Collie – Lake King Road which links up with the Pingrup-Lake Grace Road to the north, has been identified

as a grain freight route linking grain growing areas to the east with the Great Southern Highway and Albany Highway through to delivery centres in Wagin, Broomehill, Cranbrook and Albany. Transport links, both road, are key economic drivers of agricultural industries, as well as often being fire ignition points. These transport routes pose a definite risk to the shire.

- **Air:** Air accessibility is available by landing at Katanning or Gnowangerup airports, as well as private airstrips for light aircraft within the Shire of Kent.
- **Rail:** The railway line within the Shire is currently not operational; however, infrastructure is still present from Badgebup through to Nyabing, with ARC Infrastructure responsible for management.

A map of the Shire of Kent can be found in Appendix F – Map of the District.

Shire of Lake Grace

Geography

The Shire of Lake Grace is located 345 km from Perth in the southern wheatbelt. The Shire has a population of 1,456 people, consists of five towns (Lake Grace, Newdegate, Lake King, Varley and part of Pingaring) and covers 11,885 km². Newdegate is 52 km east of Lake Grace and Lake King and Varley are 115 and 120 km respectively from Lake Grace.

Topography and Vegetation

The Shire of Lake Grace features extensive cereal crops and open views across broad, shallow valleys formed by ancient drainage channels. Valley systems are generally indistinct, and waterbodies consist of saline wetlands or chains of shallow salt lakes, such as Lake Grace and Lake King. The edges of these wetlands typically have swamp sheoak (*Casuarina obesa*), saltwater paperbark (*Melaleuca cuticularis*), and low succulent samphires on moist salt flats. Many adjacent trees are dead, which indicates increasing salinity in the wheatbelt. Remnant vegetation is infrequent and does not significantly interrupt open views. Salmon gum (*Eucalyptus salmonophloia*) occurs in remnant woodland patches on richer, pale loamy clay soils. Inland wandoo (*Eucalyptus capillosa*) is found in limited locations, sometimes with redwood (*Eucalyptus transcontinentalis*), red morrel (*Eucalyptus longicornis*), gimlet (*Eucalyptus salubris*), and jam tree (*Acacia acuminata*) near the eastern border. The sparse understorey includes sheoaks (*Allocasuarina fraseriana*), Acacias, occasional Banksias, flat-topped yate (*Eucalyptus occidentalis*), and roadside teatree (*Leptospermum erubescens*). The landscape primarily consists of agricultural land, with fencelines and lines of remnant vegetation along roadsides, creeklines, or property entrances. Isolated hills and granite outcrops, such as Dingo Rock, are visual features within the local topography.

Climate

The Shire is described as having a Mediterranean climate with cool, wet winters and warm dry summers. The Shire of Lake Grace experiences its hottest temperatures in the summer months of December to February; however, it is not uncommon for these temperatures to carry over to early March. These months are dry and hot, and relief is often provided by an evening breeze known as the

“Albany Doctor” which often comes in early in the summer evenings. The winter months can be quite cold and frosty, and the majority of our rainfall occurs in these months. Annual average rainfall for the Shire of Lake Grace is 351.1mm. The wettest months are April through October when over 73% of the annual rainfall occurs.

Population

The Shire includes the localities of Lake Grace, Beenong, Buniche, Lake Bidy, Lake Camm, Lake King, Newdegate, Varley Magenta and Dunn Rock. The Shire’s service and population centres are Lake Grace, Newdegate, Lake King and Varley with adjoining local government authorities the Shires of Dumbleyung, Kulin, Kondinin, Ravensthorpe, Jerramungup, Kent, Dundas and Esperance. According to the ABS 2021 Census the total population of the Shire is 1265.

Infrastructure

Access to these towns is mainly by road; however, there is an airstrip at Lake Grace and authorised landing areas at Newdegate, Lake King and Varley. The Lake Grace-Newdegate and Lake Grace-Hyden railway lines are used primarily for the transportation of grain.

- **Road:** Key transport links within the Shire of Lake Grace include the Collie – Lake King Road (Part of State Route 107) running East-West through the centre of town plus the Brookton Highway (aka Hyden-Lake King Road and Newdegate – Ravensthorpe Road) in the east. The Kulin - Lake Grace Road is a major road running North between Lake Grace and Kulin the Pingrup - Lake Grace Road is a major road running South between Lake Grace and Pingrup. The Collie – Lake King Road has been identified as a Grain Freight Route linking grain growing areas to the east with the Great Southern Highway and Albany Highway through to delivery centres in Wagin, Broomehill, Cranbrook and Albany.
- **Rail:** The Shire is accessible by rail via Wagin. The rail system is solely in place to move grain from bulk handling facilities.
- **Air:** Air accessibility is available by landing at the Lake Grace and Newdegate airstrips. The Lake Grace air strip is an all-weather strip with night landing lights.

Key transport links within the Shire of Lake Grace include the Collie – Lake King Road (Part of State Route 107) running East-West through the centre of town plus the Brookton Highway (aka Hyden-Lake King Road and Newdegate – Ravensthorpe Road) in the east. The Kulin - Lake Grace Road is a major road running North between Lake Grace and Kulin the Pingrup - Lake Grace Road is a major road running South between Lake Grace and Pingrup. The Collie – Lake King Road has been identified as a Grain Freight Route linking grain growing areas to the east with the Great Southern Highway and Albany Highway through to delivery centres in Wagin, Broomehill, Cranbrook and Albany.

Tourists regularly use the main roads through the Shire along with heavy vehicles carrying goods to and from Esperance. With the First Quantum Minerals mine site expanding at Ravensthorpe, larger than normal loads are transported through the towns of Lake Grace, Newdegate and Lake King with some loads carrying dangerous goods. During harvesting season grain carting vehicles frequently use the road and, when combined with the tourist traffic, these

roads can become hazardous. Arc Infrastructure have assets in the Shire of Lake Grace which includes a tier 2 railway line and undertake a program of work along their rail corridor to protect their infrastructure. The economy of the Shire of Lake Grace is based around the agricultural industry with cereal crops (oats, wheat, barley) pulse crops (lupins) oil seed (canola), sheep (wool & meat), cattle (meat) and pigs.

A map of the Shire of Lake Grace can be found in Appendix F – Map of the District.

1.6 Related Documents and Arrangements

1.6.1 Local Emergency Management Policies

Local government policies for emergency management refer to any policies which are unique to that local government area for example, bylaws or operational policies.

Shire of Dumbleyung

Business Continuity Plan 2023

Policy 5.1 Fire Safety Precautions during Christmas Break

Policy 5.6 Bushfire Control Volunteers Training Costs

Policy 5.7 Bushfire Costs

Policy 5.8 Harvest Operations- Mobile Fire Fighting Unit

Policy 8.18 Staff Volunteers

Bushfire Risk Management Plan (2023)

Bush Fire Brigades Local Law 2023

Volunteer Bush Fire Brigade Guidelines and Operational Procedures (2025)

Shire of Kent

Bushfire Risk Management Plan (2022)

Bush Fire Brigades Local Law 2024

Volunteer Bush Fire Brigade Guidelines and Operational Procedures (2025)

Shire of Lake Grace

Bushfire Risk Management Plan (2022)

Bush Fire Brigades Local Law 2016

Volunteer Bush Fire Brigade Guidelines and Operational Procedures (2025)

1.6.2 Local Plans & Arrangements

Local plans and arrangements are identified for each LGA as follows.

Shire of Dumbleyung

Document	Owner	Location	Date
Local Recovery Plan	Shire of Dumbleyung	Shire of Dumbleyung	2019
Risk Register	Shire of Dumbleyung	Shire of Dumbleyung	2025
Local Emergency Relief and Support Plan	Department of Communities	Department of Communities – Northam	2025
Dumbleyung Primary School Incident Management Plan	Dumbleyung Primary School	Department of Education	2025
Dumbleyung Primary School Standalone Bushfire Plan	Dumbleyung Primary School	Department of Education	2025
Kukerin Primary School Standalone Bushfire Plan	Kukerin Primary School	Department of Education	2025
Dumbleyung Hospital Evacuation Plan	WACHS	Dumbleyung Hospital	2022
Business Continuity Plan	Shire of Dumbleyung	Under development	2026
Communications Strategic Plan	Shire of Dumbleyung	Under development	2026

Table 2: Shire of Dumbleyung Local Plans

Shire of Kent Document	Owner	Location	Date
Local Emergency Relief and Support Plan	Department of Communities	Under review and development	July 2019
Risk Register	Shire of Kent	Shire of Kent	2025
Plan for Animal Welfare in Emergencies	Shire of Kent	Under development	2026
Business Continuity Plan	Shire of Kent	Under development	2026
Communications Strategic Plan	Shire of Kent	Under development	2026
Nyabing Primary School Standalone Bushfire Plan	Nyabing Primary School	Department of Education	2025

Shire of Kent Document	Owner	Location	Date
Pingrup Primary School Standalone Bushfire Plan	Pingrup Primary School	Department of Education	2025

Table 3: Shire of Kent Local Plans

Shire of Lake Grace

Document	Owner	Location	Date
Risk Register	Shire of Lake Grace	Shire of Lake Grace	2025
Local Emergency Relief and Support Plan	Department of Communities	Department of Communities – Northam	2025
Plan for Animal Welfare in Emergencies	Shire of Lake Grace	Under development	2026
Business Continuity Plan	Shire of Lake Grace	Under development	2026
Communications Strategic Plan	Shire of Lake Grace	Under development	2026
Lake Grace District High School Standalone Bushfire Plan	Lake Grace District High School	Department of Education	2025
Newdegate Primary School Standalone Bushfire Plan	Newdegate Primary School	Department of Education	2025
Lake King Primary School Standalone Bushfire Plan	Lake King Primary School	Department of Education	2025

Table 4: Shire of Lake Grace Local Plans

1.6.3 Agreements, understandings and commitments

Shire of Dumbleyung

Party 1	Party 2	Summary of the Agreement	Special Considerations
Central Country Zone		MOU Emergency Management Assistance (2023)	Shire of Kent is not a party to this agreement.
Wagin, West Arthur, Williams, Wickepin, Dumbleyung and Lake Grace		4WDL Voluntary Regions of Council – Memorandum of Understanding	Shire of Kent is not a party to this agreement.

Table 5: Shire of Dumbleyung agreements, understandings and commitments

Shire of Kent

Party 1	Party 2	Summary of the Agreement	Special Considerations
Katanning, Cranbrook, Kojonup, Plantagenet, Gnowangerup, Broomehill-Tambellup, Woodanilling.		Great Southern Voluntary Regions of Council – Memorandum of Understanding	Shires of Dumbleyung and Lake Grace not a party to this agreement.

Table 6: Shire of Kent agreements, understandings and commitments

Shire of Lake Grace

Party 1	Party 2	Summary of the Agreement	Special Considerations
Central Country Zone		MOU Emergency Management Assistance (2023)	Shire of Kent is not a party to this agreement.
Wagin, West Arthur, Williams, Wickepin, Dumbleyung and Lake Grace		4WDL Voluntary Regions of Council – Memorandum of Understanding	Shire of Kent is not a party to this agreement.

Table 7: Shire of Lake Grace agreements, understandings and commitments

1.6.4 Special Considerations

Special considerations are identified for each of the LGA as follows:

Shire of Dumbleyung

Description	Time of Year	Impact / Number of People
High Risk Periods		
Reduced Capability Period	December – January	Reduced number of volunteers available within the community due to holiday season.
Bushfire Season	October – May	Each year this period is high risk
Harvest Operation Period	October – January	With farmer’s busiest time of year, the fuel load is higher due to large crops and the risk is high due to interaction between farm machinery and high fuel

		loads. This includes a high-volume seasonal workforce.
High Risk Locations		
Rural Properties	All year	Fire risk with increased fuel loads around these properties especially on farming land.
Lake, Creek and River System	Potentially yearly	Flood risk due to the capacity of these systems and low-lying proximate areas.
Large Public Events		
Bluebird Festival	Once every two years.	Large number of attendees
Kukerin Creekbed & Burnout Competition	Last weekend two-day event in September yearly.	Large number of attendees
Woolarama (Wagin)	First weekend two-day event in March yearly.	Large number of attendees
Tourist Periods & Locations		
Tourist Season	All Year	Stubbs Park - RV Area Dumbleyung Caravan Park and Accommodation Units Grand Old Dumbleyung Inn Kukerin Caravan Park Kukerin Community Hub Mary's Farm Cottages

Shire of Kent

Description	Time of Year	Impact / Number of People
High Risk Periods		
Reduced Capability Period	December – January	Reduced number of volunteers available within the community due to holiday season.
Bushfire Season	October – May	Each year this period is high risk
Harvest Operation Period	October – January	With farmer's busiest time of year, the fuel load is higher due to large crops and the risk is high due to interaction between farm machinery and high fuel loads. This includes a high-volume seasonal workforce.

High Risk Locations		
Rural Properties	All year	Fire risk with increased fuel loads around these properties especially on farming land.
Lake, Creek and River System	Potentially yearly	Flood risk due to the capacity of these systems and low-lying proximate areas.
Large Public Events		
Pingrup Race Day	March annually	Large number of attendees
Tourist Periods & Locations		
Tourist Season	All Year	Nyabing Caravan Park Nyabing Community Hub Pingrup Caravan Park and Accommodation Units

Shire of Lake Grace

Description	Time of Year	Impact / Number of People
High Risk Periods		
Reduced Capability Period	December – January	Reduced number of volunteers available within the community due to holiday season.
Bushfire Season	October – May	Each year this period is high risk
Harvest Operation Period	October – January	With farmer’s busiest time of year, the fuel load is higher due to large crops and the risk is high due to interaction between farm machinery and high fuel loads. This includes a high-volume seasonal workforce.
High Risk Locations		
Rural Properties	All year	Fire risk with increased fuel loads around these properties especially on farming land.
Lake, Creek and River System	Potentially yearly	Flood risk due to the capacity of these systems and low-lying proximate areas.

Large Public Events		
Newdegate Field Days	1st Wednesday and Thursday in September	Large number of attendees
Lake King Kart Club Annual Open Event	August annually	Large number of attendees
Tourist Periods & Locations		
Tourist Season	All Year	Lake Grace Caravan Park Lake Grace Jam Patch Free Camping Salt Bush Inn Lake Grace Lake Grace Roadhouse and Motel Lake Grace Hotel Holland Track Farm Bed and Breakfast Lake King Caravan Park Lake King Tavern Newdegate Caravan Park Newdegate Hotel Varley Chicken Ranch

2. Resources, Roles and Responsibilities

2.1 Local Resources

For further detail refer to Appendix D Resource Register.

2.2 Local Roles and Responsibilities

Detail the specific roles and responsibilities for officers in the local government area. Add any localised roles and responsibilities in addition to the ones suggested below.

Local Role	Description of Responsibilities
Local government	The responsibilities of the Shire of Dumbleyung, the Shire of Kent, and the Shire of Lake Grace are defined in section 36 of the EM Act.
Local emergency coordinator	The responsibilities of the LEC are defined in section 37 of the EM Act.
Local recovery coordinator	To ensure the development and maintenance of effective recovery management arrangements for the local government. In conjunction with the local recovery committee to implement a post incident recovery action plan and manage the recovery phase of the incident.
LG liaison officer	During an evacuation where a local government facility is utilised by the Department of Communities provide advice, information and resources regarding the operation of the facility.
LG liaison officer (to the ISG/IMT)	During a major emergency, the liaison officer attends ISG meetings to represent the local government and provide local knowledge input and details in the LEMA.

Local Role	Description of Responsibilities
Local government – Incident management	<ul style="list-style-type: none"> • Ensure planning and preparation for emergencies is undertaken • Implement procedures that assist the community and emergency services deal with incidents • Ensure all personnel with emergency planning and preparation, response and recovery responsibilities are properly trained in their role • Keep appropriate records of incidents that have occurred to ensure continual improvement of the Shires emergency response capability. • Liaise with the incident controller (provide liaison officer) • Participate in the ISG and provide local support • Where an identified evacuation centre is a building owned and operated by local government, provide a liaison officer to support the Department of Communities.

Table 8: Local roles and responsibilities

2.3 LEMC Roles and Responsibilities

The Shires of Dumbleyung, Kent, and Lake Grace have established a combined Local Emergency Management Committee (LEMC) under section 38(1) of the EM Act to oversee, plan and test the local emergency management arrangements.

The LEMC includes representatives from agencies, organisations and community groups that are relevant to the identified risks and emergency management arrangements for the community. The LEMC is not an operational committee but rather the organisation established by the local government to assist in the development of local emergency management arrangements for its district.

The LEMC plays a vital role in assisting our communities become more prepared for major emergencies by:

- Developing, enhancing and testing preparedness planning from a multi-agency perspective having local knowledge of hazards, demographic and geographic issues; they provide advice to Hazard Management Agencies to develop effective localised hazard plans
- providing a multi-agency forum to analyse and treat local risk
- providing a forum for multi-agency stakeholders to share issues and learnings to ensure continuous improvement.

The LEMC membership must include at least one local government representative and the Local Emergency Coordinator. Relevant government agencies and other statutory authorities will nominate their representatives to be members of the LEMC. The term of appointment of LEMC

members shall be determined by the local government in consultation with the parent organisation of the members.

Local Role	Description of Responsibilities
LEMC Chair	Provide leadership and support to the LEMC to ensure effective meetings and high levels of emergency management planning and preparedness for the local government district is undertaken.
LEMC Deputy Chair	To support to the LEMC Chair; and, in the absence of the LEMC Chair provide leadership and support to the LEMC to ensure effective meetings and high levels of emergency management planning and preparedness for the local government district is undertaken.
LEMC Executive Officer	Provide executive support to the LEMC by: <ul style="list-style-type: none"> • Provide secretariat support including: <ul style="list-style-type: none"> – Meeting agenda – Minutes and action lists – Correspondence – Committee membership contact register. • Coordinate the development and submission of committee documents in accordance with legislative and policy requirements including: <ul style="list-style-type: none"> – Annual Report – Annual Business Plan – Local Emergency Management Arrangements. • Facilitate the provision of relevant emergency management advice to the Chair and committee as required. • Participate as a member of sub-committees and working groups as required.

2.4 Agency Roles and Responsibilities

In the event of an emergency, the local government/s involved will need to liaise with a range of State agencies who will be involved in the operational aspects of the emergency. The following table summarises the key roles.

Agency Roles	Description of Responsibilities
Controlling Agency	<p>A Controlling Agency is an agency nominated to control the response activities to a specified type of emergency.</p> <p>The function of a Controlling Agency is to:</p> <ul style="list-style-type: none"> • undertake all responsibilities as prescribed in Agency specific legislation for Prevention and Preparedness. • control all aspects of the response to an incident. <p>During Recovery the Controlling Agency will ensure effective transition to recovery.</p>
Hazard Management Agency (HMA)	<p>A hazard management agency is ‘to be a public authority or other person who or which, because of that agency’s functions under any written law or specialised knowledge, expertise and resources, is responsible for emergency management, or the prescribed emergency management aspect, in the area prescribed of the hazard for which it is prescribed.’ (s.4 EM Act).</p> <p>The HMAs are prescribed in the <i>Emergency Management Regulations 2006</i>.</p> <p>Their function is to:</p> <ul style="list-style-type: none"> • Undertake responsibilities where prescribed for these aspects [EM Regulations] • Appoint Hazard Management Officers [s. 55 EM Act] • Declare / revoke emergency situation [s. 50 & 53 EM Act] • Coordinate the development of the State Hazard Plan for that hazard [State EM Policy section 1.5] <p>Ensure effective transition to recovery by local government</p>
Combat Agency	<p>A Combat Agency as prescribed under subsection (1) of the <i>Emergency Management Act 2005</i> is to be a public authority or other person who or which, because of the agency’s functions under any written law or specialised knowledge, expertise and resources, is responsible for performing an emergency management activity prescribed by the regulations in relation to that agency.</p>
Support Organisation	<p>A public authority or other person who or which, because of the agency’s functions under any written law or specialised knowledge, expertise and resources is responsible for providing support functions in relation to that agency. (State EM Glossary)</p>

3. Emergency Risk Management

3.1 Description of emergencies likely to occur

Emergencies likely to occur in local area

Hazard	Controlling Agency	HMA	Local Combat Roles	Local Support Roles	State Hazard Plan	Local Plan (Date)
Fire	DFES / LGA / DBCA	FES Commissioner	SJWA / LGA	Dept. of Communities Main Roads WA	Fire	2026
Storm	DFES	FES Commissioner	SJWA / LGA	Dept. of Communities Main Roads WA	Severe Weather	2026
Flood	DFES	FES Commissioner	SJWA / LGA	Dept. of Communities Main Roads WA	Severe Weather	2026
Animal or Plant Biosecurity	DPIRD	Director General DPIRD	SJWA / LGA	Dept. of Communities	Animal or Plant Biosecurity	2026
Other substance - HazMat	DFES	FES Commissioner	SJWA / LGA	Dept. of Communities	HazMat	2026
Rail Crash	WAPF	Commissioner of Police	DFES / SJWA	Dept. of Communities	Crash	2026
Road Crash	WAPF	Commissioner of Police	DFES / SJWA	Dept. of Communities Main Roads WA	Crash	2026

These arrangements are based on the premise that the Hazard Management Agency and Controlling Agency are responsible for the above risks and will develop, test and review appropriate emergency management plans for their hazard.

3.2 Emergency management strategies and priorities

For local emergency management strategies and priorities please refer to the Appendix C.

4. Coordination of Emergency Operations

It is recognised that the HMAs and combat agencies may require local government resources and assistance in emergency management. The Shire of Dumbleyung, the Shire of Kent, and the Shire of Lake Grace are committed to providing assistance/support if the required resources are available through the Incident Support Group when and if formed.

4.1 Incident Support Group

The Incident Support Group (ISG) is convened by the Controlling Agency appointed Incident Controller to assist in the overall coordination of services and information during a major incident. Coordination is achieved through clear identification of priorities by agencies sharing information and resources.

The role of the ISG is to provide support to the incident management team. The ISG is a group of people represented by the different agencies who may have involvement in the incident.

4.1.1 Triggers for an ISG

The triggers for an incident support group are defined in State EM Policy statement 5.2.2 and State EM Plan section 5.1. These are:

- where an incident is designated as Level 2 or higher
- multiple agencies need to be coordinated.

4.1.2 Membership of an ISG

The Incident Support Group is made up of agencies' representatives that provide support to the Controlling Agency. Emergency Management Agencies may be called on to be liaison officers on the Incident Support Group.

The recovery coordinator should be a member of the ISG from the onset, to ensure consistency of information flow, situational awareness and handover to recovery.

The representation on this group may change regularly depending upon the nature of the incident, agencies involved, and the consequences caused by the emergency.

Agencies supplying staff for the ISG must ensure that the representative(s) have the authority to commit resources and/or direct tasks.

4.1.3 Frequency of ISG Meetings

The frequency of ISG meetings will be determined by the Incident Controller and will generally depend on the nature and complexity of the incident. As a minimum, there should be at least one meeting per incident. Coordination is achieved through clear identification of priorities and objectives by agencies sharing information and resources.

4.1.4 Location of ISG Meetings

The Incident Support Group meets during an emergency and provides a focal point for a coordinated approach. The following locations have been identified as suitable meeting points.

Local Government	Primary	Secondary	Ancillary
Shire of Dumbleyung	Shire Office 32 Harvey Road Dumbleyung WA 6350 W: 9863 4012	Nenke Park Pavillion 89 Bennett Street Kukerin WA 6352	Dumbleyung Community Resource Centre W: 0459 932 616 Kukerin Community Hub W: 9864 6338
Shire of Kent	Shire Office 24 Richmond Street Nyabing WA 6341 W: 9851 9780	Pingrup Community Resource Centre 2 Burston Street Pingrup WA 6343 W: 9820 1101	Nyabing Pavillion Pingrup Town Hall
Shire of Lake Grace	Shire of Lake Grace 1 Bishop Street Lake Grace WA 6353 W: 9890 2500	Lake Grace Community Resource Centre School Place Lake Grace WA 6353 W: 9865 1470	Newdegate Community Resource Centre W: 9871 1791

4.2 Media Management and Public Information

Communities threatened or impacted by emergencies have an urgent and vital need for information and direction. Such communities require adequate, timely information and instructions in order to be aware of the emergency and to take appropriate actions to safeguard life and property. The provision of this information is the responsibility of the Controlling Agency.

4.2.1 Public warning systems

During times of an emergency one of the most critical components of managing an incident is getting information to the public in a timely and efficient manner. This section highlights local communication strategies.

4.2.2 Local Systems

Local Government	<u>Messaging Services</u>
Shire of Dumbleyung	SMS by subscription at Shire Office (SMS Global)

Shire of Kent	Shire of Kent WhatsApp Service by subscription at Shire Website
Shire of Lake Grace	SMS by subscription at Shire Office (TIMS)

Local Government	<u>Social Media</u>
Shire of Dumbleyung	Facebook (@DumbleyungShire)
Shire of Kent	Facebook (@ShireofKent)
Shire of Lake Grace	Facebook (@ShireofLakeGrace)

Local Government	<u>Websites</u>
Shire of Dumbleyung	https://www.dumbleyung.wa.gov.au
Shire of Kent	https://www.kent.wa.gov.au
Shire of Lake Grace	https://www.lakegrace.wa.gov.au

Local Government	<u>Public Information Phone Lines</u>
Shire of Dumbleyung	Bush Fire Information Hotline: (08) 9487 5410
Shire of Lake Grace	Harvest Vehicle Movement Ban: (08) 9487 7191
Shire of Kent	Hazard Reporting only: (08) 9851 9780

Local Government	<u>Community Notice Boards</u>
Shire of Dumbleyung	<p>Dumbleyung General Store 207 Absolon Street Dumbleyung WA 6350</p> <p>Dumbleyung Community Resource Centre 28 Absolon Street Dumbleyung WA 6350</p> <p>Kukerin General Store 25 Scaddan Street Kukerin WA 6352</p>
Shire of Kent	<p>Nyabing General Store 16 Richmond Street Nyabing WA 6341</p>

	<p>Pingrup Community Resource Centre 2 Burston Street Pingrup WA 6343</p>
Shire of Lake Grace	<p>Lake Grace IGA Stubbs Street Lake Grace WA 6353</p> <p>Shire Office 1 Bishop Street Lake Grace WA 6353</p> <p>Lake Grace Community Resource Centre School Place Lake Grace WA 6353</p> <p>Newdegate Community Resource Centre Collier Street Newdegate WA 6355</p>

4.3 Funding Arrangements

State EM Policy section 5.12, State EM Plan section 5.4 and 6.10 and State EM Recovery Procedures 1-2) outlines the responsibilities for funding during multi- agency emergencies. While recognising the above, the Shire of Dumbleyung, the Shire of Kent, and the Shire of Lake Grace are committed to expending such necessary funds within its current budgetary constraints as required to ensure the safety of its residents and visitors. The Chief Executive Officer should be approached immediately an emergency event requiring resourcing by the affected local government occurs to ensure the desired level of support is achieved.

4.4 Evacuation Arrangements

Comprehensive emergency management planning should involve planning for community evacuations. Although the actual act of evacuating a community is the responsibility of the HMA or Controlling Agency (where authorised by the HMA), the local government with the assistance of its LEMC is responsible pre-emergency evacuation planning. An evacuation plan for local government, whether it is part of a LEMA or a stand-alone document, is of considerable value to all agencies with a potential role in an evacuation and needs to be easily available to the Controlling Agency and/or HMA in an emergency to support informed decisions in a timely manner.

Referencing relevant evacuation plans from adjoining local areas may assist where the impact of a hazard may not be confined to the local government boundaries and may offer the most suitable evacuation options for some emergencies.

To assist with emergency evacuation planning SEMC has endorsed the [Western Australian Community Evacuation in Emergencies Guideline](#) which has a section on pre-emergency evacuation planning for local governments and LEMCs and dot point items for consideration.

4.4.1 Evacuation centres

Evacuation centres and relevant details are provided at Appendix E – Evacuation centre information.

4.4.2 Evacuation of animals

The Shires of Dumbleyung, Kent and Lake Grace are currently reviewing independent Animal Welfare Plans, and processes for the evacuation of animals.

4.4.3 At-risk groups

Refer to Appendix B for a list of at-risk groups.

4.5 Routes and Maps

Maps of the three localities are provided at Appendix F – Map of the District.

4.6 Emergency Relief and Support

The Department of Communities has the role of managing emergency relief and support services and have developed a Local Emergency Relief and Support Plan for the Shire of Dumbleyung and the Shire of Lake Grace (Wheatbelt District). A LERSP is under development as relevant to the Shire of Kent.

4.6.1 Local Evacuation Centre Coordinator

The Local Evacuation Centre Coordinator is appointed by the Department of Communities to:

- a) Establish, chair and manage the activities of the Local Emergency Relief and Support Coordination Group, where determined appropriate by the District Director.
- b) Prepare, promulgate, test and maintain the Local Emergency Relief and Support Plan.
- c) Represent the department and the emergency relief and support function on the Local Emergency Management Committee and Local Recovery Committee.
- d) Establish and maintain the Evacuation Centre.
- e) Ensure personnel and organisations are trained and exercised in their emergency relief and support responsibilities.
- f) Coordinate the provision of emergency relief and support services during response and recovery phases of an emergency.
- g) Represent the department on the Incident Management Group when required.

Local Evacuation Centre Coordinator	Region; District; Local Government	Contact Number
On-call Number	Wheatbelt; Narrogin; Shire of Dumbleyung; and Shire of Lake Grace	0418 943 835
On-call Number	Wheatbelt; Great Southern; Shire of Kent	0418 943 835

4.6.2 Local Government Liaison Officer

The Local Government Liaison Officer is nominated by the local government to coordinate welfare response during emergencies and liaise with the Local Evacuation Centre Coordinator. Local government should appoint a liaison officer. This role will provide assistance to the Local Evacuation Centre, including the management of emergency evacuation centres such as building opening, closing, security and maintenance. It is important to identify the initial arrangements for emergency relief and support to occur, particularly in remote areas, where it may take some time for Department of Communities to arrive.

Local Government	Name	Phone Number	Email Address
Shire of Dumbleyung	Kristina Pearce	0474 723 875	kristina.pearce@dumbleyung.wa.gov.au
Shire of Kent	Jessica Browne	(08) 9851 9780	admin4@kent.wa.gov.au
Shire of Lake Grace	Joanne Oatridge	(08) 9890 2500	iso@lakegrace.wa.gov.au

4.6.3 Register.Find.Reunite

When a large-scale emergency occurs and people are evacuated or become displaced, one of the areas Department of Communities has responsibility for is recording who has been displaced and placing the information onto a National Register. This primarily allows friends or relatives to locate each other. Because of the nature of the work involved Department of Communities have reciprocal arrangements with the Red Cross to assist with the registration process.

5. Recovery

As managing recovery is a legislated function of local government the Local Recovery Plan is a compulsory sub-plan of the LEMA. Accordingly, a Local Recovery Plan has been developed for each of the local governments i.e., the Shire of Dumbleyung, the Shire of Kent, and the Shire of Lake Grace. These Local Recovery Plans are retained by each relevant local government as a part of these arrangements.

5.1 Local recovery coordinator

Each local government is required to nominate a Local Recovery Coordinator to advise and assist the local government and coordinate local recovery activities as outlined in State EM Policy section 6, State EM Plan section 6 and State EM Recovery Procedures 5.1-5.4. A Local Recovery Coordinator for each of the local governments i.e., the Shire of Dumbleyung, the Shire of Kent, and the Shire of Lake Grace has been appointed. Details are contained within the Local Recovery Plans retained by each relevant local government as a part of these arrangements.

6. Exercising, Reviewing and Reporting Arrangements

6.1 Exercise Local Emergency Management Arrangements

6.1.1 The Aim of Exercising

Testing and exercising is essential to ensure that emergency management arrangements are workable and effective. Testing and exercising is important to ensure individuals and organisations remain aware of what is required of them during an emergency response situation. The exercising of a HMA's response to an incident is a HMA responsibility however it could be incorporated into the local government exercise.

Exercising the emergency management arrangements will allow the local government to:

- Test the effectiveness of the local arrangements
- Bring together members of emergency management agencies and give them knowledge of, and confidence in, their roles and responsibilities
- Help educate the community about local arrangements and programs
- Allow participating agencies an opportunity to test their operational procedures and skills in simulated emergency conditions
- Test the ability of separate agencies to work together on common tasks, and to assess effectiveness of co-ordination between them.

6.1.2 Frequency of Exercises

State EM Policy section 4.8, State EM Plan 4.7 and State EM Preparedness Procedure 19 outline the State's arrangements for EM exercising, including the requirement for local governments to exercise on an annual basis. Additionally, LEMAs must be validated through exercise or activation within 12 months of any significant amendments made through a comprehensive or targeted review (State EM Policy section 1.5.10).

6.1.3 Types of Exercises

Some examples of exercise types include:

- desktop/discussion
- a phone tree recall exercise
- opening and closing procedures for evacuation centres or any facilities that might be operating in an emergency
- operating procedures of an emergency coordination centre
- locating and activating resources on the emergency resources register.

Reporting of Exercises

Each local government reports their exercise schedule to the relevant DEMC prior to the start of the calendar year for inclusion in the DEMC report to the SEMC.

Once local government exercises have been completed, post-exercise reports should be forwarded to the DEMC as soon as practicable (State EM Policy section 4.11.3).

6.2 Review Local Emergency Management Arrangements

The Local Emergency Management Arrangements (LEMA) shall be reviewed in accordance with State EM Policy section 2.5 and amended or replaced whenever the local government considers it appropriate (s.42 of the EM Act). However, according to State EM Preparedness Procedure 8, the LEMA (including recovery plans) are to be reviewed and amended in the following situations:

- after an event or incident requiring the activation of an Incident Support Group or an incident requiring significant recovery coordination; and
- an entire review is undertaken every five (5) years, as risks might vary due to climate, environment and population changes.

Appendix G - Contacts will be reviewed at each LEMC or LRCG meeting and/conducted quarterly.

6.2.1 Review of Local Emergency Management Committee positions

The local government, in consultation with the parent organisation of members shall determine the term and composition of LEMC positions.

6.2.2 Review of resources register

The Executive Officer shall have the resources register checked and updated on an annual basis, ongoing amendments occur at each LEMC meeting.

6.3 Annual Reporting

The annual report of the LEMC is to be completed and submitted to the DEMC within 2 weeks of the end of the financial year for which the annual report is prepared. The LEMC is required to submit a signed hard copy of the annual report to the Executive Officer of the DEMC.

The information provided by the LEMC annual report is collated into the SEMC Annual Report which is tabled in Parliament.

The SEMC Business Unit will issue the annual report template.

Appendices

Appendix A: Critical Infrastructure

Shire of Dumbleyung

Item	Location	Description	Owner	Contact Details	Community Impact Description
Dumbleyung Memorial Hospital	McIntyre Street Dumbleyung	Acute Hospital	WACHS	see App. B - At Risk Groups Register	Loss of localised health services
Kukerin Nursing Post	Manser Street Kukerin	Nursing Post	WACHS	see App. B - At Risk Groups Register	Loss of localised health services
Dongolocking Creek Bridge (Bridge 4644)	One Twenty-Nine Rd	Prestressed Concrete	Shire of Dumbleyung	Director of Infrastructure 0427 634 012	Loss of community road movement / access
Cobline River Bridge (Bridge 0658)	Katanning - Dumbleyung Rd	Timber	Shire of Dumbleyung	Director of Infrastructure 0427 634 012	Loss of community road movement / access
Washpool Gully Bridge (Bridge 0543)	Collie Lake King Rd	Timber	Main Roads WA	Operations Manager +610455874432	Loss of community road movement / access
Meinmuggin Gully Bridge (Bridge 0544)	Collie Lake King Rd	Timber	Main Roads WA	Operations Manager +610455874432	Loss of community road movement / access
Dongolocking Creek Bridge (Bridge 1648)	Collie Lake King Rd	Prestressed Concrete	Main Roads WA	Operations Manager +610455874432	Loss of community road movement / access
Dongolocking Creek Bridge (Bridge 4640)	Dumbleyung - Nyabing Rd	Timber	Shire of Dumbleyung	Director of Infrastructure 0427 634 012	Loss of community road movement / access

Item	Location	Description	Owner	Contact Details	Community Impact Description
Cobline River Bridge (Bridge 3168)	Bibiking Rd	Timber	Shire of Dumbleyung	Director of Infrastructure 0427 634 012	Loss of community road movement / access
Dongolocking Creek Bridge (Bridge 3170)	Dumbleyung - Nyabing Rd	Timber	Shire of Dumbleyung	Director of Infrastructure 0427 634 012	Loss of community road movement / access
Kukerin Primary School	10 Bennett Street Kukerin	Primary school	Dept. of Education	see App. B - At Risk Groups Register	Loss of community based educational facilities
Dumbleyung Primary School	49 Taylor Street Dumbleyung	Primary school	Dept. of Education	see App. B - At Risk Groups Register	Loss of community based educational facilities
Water Pumping Station	Moulyinning	Pumping Station	Water Corporation	Operations Manager 0488900452	Loss of community water supply
Water Treatment Plant	Jose Road CDP	Water Treatment Plant	Water Corporation	Operations Manager 0488900452	Loss of community-based sanitation capability
Water Treatment Plant	Kukerin	Water Treatment Plant	Water Corporation	Operations Manager 0488900452	Loss of community-based sanitation capability
Sewerage Pond Treatment	Stubbs Park, Dumbleyung	Sewerage Pumping Station	Shire of Dumbleyung	Director of Infrastructure 0427 634 012	Loss of community water supply
Sewerage Pumping Station	Bartram Rd, Dumbleyung	Sewerage Pumping Station	Shire of Dumbleyung	Director of Infrastructure 0427 634 012	Loss of community water supply

Item	Location	Description	Owner	Contact Details	Community Impact Description
DFES WAERN Repeater	Stanley Hill Dumbleyung	Radio Repeater Tower for WAERN	DFES	DFES ICT Service Desk (08) 9395 9489	Loss of emergency services communication
WAPOL Comms Site	Wishbone	WAPOL Comms Site	WA Police Force	Local Emergency Coordinator (WAPF OIC)	Loss of emergency services communication
SJWA Comms Site	Hospital Dumbleyung	SJWA Comms Site	SJWA	SJWA 93341222	Loss of emergency services communication
SJWA Comms Site	Stanley Hill Dumbleyung	SJWA Comms Site	SJWA	SJWA 93341222	Loss of emergency services communication
SJWA Comms Site	Kukerin	SJWA Comms Site	SJWA	SJWA 93341222	Loss of emergency services communication
TELSTRA Site	Dumbleyung	TELSTRA Site	TELSTRA	Emergency Services Liaison eslo.wa@team.telstra.com	Loss of emergency warnings and comms.
TELSTRA Site	Kukerin	TELSTRA Site	TELSTRA	Emergency Services Liaison eslo.wa@team.telstra.com	Loss of emergency warnings and comms.
TELSTRA Site	Tarin Rock	TELSTRA Site	TELSTRA	Emergency Services Liaison eslo.wa@team.telstra.com	Loss of emergency warnings and comms.
TELSTRA Site	Wishbone	TELSTRA Site	TELSTRA	Emergency Services Liaison eslo.wa@team.telstra.com	Loss of emergency warnings and comms.

Item	Location	Description	Owner	Contact Details	Community Impact Description
TELSTRA Site	North Kukerin	TELSTRA Site	TELSTRA	Emergency Services Liaison eslo.wa@team.telstra.com	Loss of emergency warnings and comms.
TELSTRA Site	Dongolocking	TELSTRA Site	TELSTRA	Emergency Services Liaison eslo.wa@team.telstra.com	Loss of emergency warnings and comms.
TELSTRA Site	Dumbleyung	TELSTRA Site	TELSTRA	Emergency Services Liaison eslo.wa@team.telstra.com	Loss of emergency warnings and comms.

Shire of Kent

Item	Location	Description	Owner	Contact Details	Community Impact Description
Evacuation Centres	Nyabing Sports Pavilion	Evacuation Centres	Dept. of Communities	see App. E - Evacuation Centre Information	Loss of local community evacuation capability
Evacuation Centres	Lake Grace Sports Pavilion	Evacuation Centres	Dept. of Communities	see App. E - Evacuation Centre Information	Loss of local community evacuation capability
Evacuation Centres	Katanning Leisure and Function Centre	Evacuation Centres	Dept. of Communities	see App. E - Evacuation Centre Information	Loss of local community evacuation capability
Pingrup Primary School	Carrie Street Pingrup	Primary school	Dept. of Education	see App. B - At Risk Groups Register	Loss of community based educational facilities

Item	Location	Description	Owner	Contact Details	Community Impact Description
Nyabing Primary School	Hobley Street Nyabing	Primary school	Dept. of Education	see App. B - At Risk Groups Register	Loss of community based educational facilities
Water Pumping Station	Nyabing	Pumping Station	Water Corporation	Operations Manager 0488900452	Loss of community water supply
Water Pumping Station	NK10 02	Pumping Station	Water Corporation	Operations Manager 0488900452	Loss of community water supply
Water Pumping Station	Pingrup	Pumping Station	Water Corporation	Operations Manager 0488900452	Loss of community water supply
Water Treatment Plant	Nyabing	Water Treatment Plant	Shire of Kent	Infrastructure Manager 0429 993 987	Loss of community-based sanitation capability
Water Treatment Plant	Pingrup	Water Treatment Plant	Shire of Kent	Infrastructure Manager 0429 993 987	Loss of community-based sanitation capability
DFES WAERN Repeater	Red Hill Nyabing	Radio Repeater Tower for WAERN	DFES	DFES ICT Service Desk (08) 9395 9489	Loss of emergency services communication
DFES WAERN Repeater	Nyabing	Radio Repeater Tower for WAERN	DFES	DFES ICT Service Desk (08) 9395 9489	Loss of emergency services communication
DFES WAERN Repeater	Lake Magenta	Radio Repeater Tower for WAERN	DFES	DFES ICT Service Desk (08) 9395 9489	Loss of emergency services communication

Item	Location	Description	Owner	Contact Details	Community Impact Description
WAPOL Comms Site	Nyabing	WAPOL Comms Site	WA Police Force	Local Emergency Coordinator (WAPF OIC)	Loss of emergency services communication
SJWA Comms Site	Gairdner	SJWA Comms Site	SJWA	SJWA 93341222	Loss of emergency services communication
DBCA Comms Site	Newdegate	DBCA Comms Site	Dept. of Bio. Conservation and Attract.	DBCA Narrogin 9881 9200 (Select – Option 1 – RDC)	Loss of emergency services communication
TELSTRA Site	Pingrup	TELSTRA Site	TELSTRA	Emergency Services Liaison eslo.wa@team.telstra.com	Loss of emergency warnings and comms.
TELSTRA Site	Nyabing	TELSTRA Site	TELSTRA	Emergency Services Liaison eslo.wa@team.telstra.com	Loss of emergency warnings and comms.
TELSTRA Site	Nyabing	TELSTRA Site	TELSTRA	Emergency Services Liaison eslo.wa@team.telstra.com	Loss of emergency warnings and comms.
TELSTRA Site	Nyabing	TELSTRA Site	TELSTRA	Emergency Services Liaison eslo.wa@team.telstra.com	Loss of emergency warnings and comms.
TELSTRA Site	Pingrup East	TELSTRA Site	TELSTRA	Emergency Services Liaison eslo.wa@team.telstra.com	Loss of emergency warnings and comms.
TELSTRA Site	Pingrup	TELSTRA Site	TELSTRA	Emergency Services Liaison eslo.wa@team.telstra.com	Loss of emergency warnings and comms.

Item	Location	Description	Owner	Contact Details	Community Impact Description
TELSTRA Site	Dumbleyung	TELSTRA Site	TELSTRA	Emergency Services Liaison eslo.wa@team.telstra.com	Loss of emergency warnings and comms.

Shire of Lake Grace

Item	Location	Description	Owner	Contact Details	Community Impact Description
Lake Grace Hospital	Stubbs Street Dumbleyung	Acute Hospital	WACHS	see App. B - At Risk Groups Register	Loss of localised health services
Varley Nursing Post	Arthur Street Varley	Nursing Post	WACHS	see App. B - At Risk Groups Register	Loss of localised health services
Bridge 1649 ("Unknown")	Collie-Lake King	Prestressed Concrete	Main Roads WA	Operations Manager +610455874432	Loss of community road movement / access
Elliott's Creek Bridge (Bridge 0545)	Albany-Lake Grace	Reinforced Concrete	Main Roads WA	Operations Manager +610455874432	Loss of community road movement / access
Evacuation Centres	Varley Hall	Evacuation Centres	Dept. of Communities	see App. E - Evacuation Centre Information	Loss of local community evacuation capability
Evacuation Centres	Indoor Recreation Centre, Waddell Street Newdegate	Evacuation Centres	Dept. of Communities	see App. E - Evacuation Centre Information	Loss of local community evacuation capability

Item	Location	Description	Owner	Contact Details	Community Impact Description
Evacuation Centres	Town Hall, McMahon Street Lake Grace	Evacuation Centres	Dept. of Communities	see App. E - Evacuation Centre Information	Loss of local community evacuation capability
Evacuation Centres	Lake King Pavillion	Evacuation Centres	Dept. of Communities	see App. E - Evacuation Centre Information	Loss of local community evacuation capability
Evacuation Centres	Varley Sports Pavillion	Evacuation Centres	Dept. of Communities	see App. E - Evacuation Centre Information	Loss of local community evacuation capability
Evacuation Centres	Lake Grace Sports Pavillion	Evacuation Centres	Dept. of Communities	see App. E - Evacuation Centre Information	Loss of local community evacuation capability
Evacuation Centres	Lake King Hall	Evacuation Centres	Dept. of Communities	see App. E - Evacuation Centre Information	Loss of local community evacuation capability
Lake King Primary School	Lake King- Newdegate Road Lake King	Primary school	Dept. of Education	see App. B - At Risk Groups Register	Loss of community based educational facilities
Newdegate Primary School	Mitchell Street Newdegate	Primary school	Dept. of Education	see App. B - At Risk Groups Register	Loss of community based educational facilities
Lake Grace District High School	School Place Lake Grace	District High School	Dept. of Education	see App. B - At Risk Groups Register	Loss of community based educational facilities
Water Pumping Station	Newdegate Town Dam	Pumping Station	Water Corporation	Operations Manager 0488900452	Loss of community water supply

Item	Location	Description	Owner	Contact Details	Community Impact Description
Water Pumping Station	Lake Grace North	Pumping Station	Water Corporation	Operations Manager 0488900452	Loss of community water supply
Water Pumping Station	Carstairs Road WPS	Pumping Station	Water Corporation	Operations Manager 0488900452	Loss of community water supply
Water Pumping Station	Varley	Pumping Station	Water Corporation	Operations Manager 0488900452	Loss of community water supply
Water Pumping Station	Tarin Rock	Pumping Station	Water Corporation	Operations Manager 0488900452	Loss of community water supply
Water Pumping Station	Lake Banks Ext	Pumping Station	Water Corporation	Operations Manager 0488900452	Loss of community water supply
Water Pumping Station	Lake King	Pumping Station	Water Corporation	Operations Manager 0488900452	Loss of community water supply
Water Pumping Station	Newdegate	Pumping Station	Water Corporation	Operations Manager 0488900452	Loss of community water supply
Water Pumping Station	Under Drainage Purnta Rock Dam	Pumping Station	Water Corporation	Operations Manager 0488900452	Loss of community water supply
Water Pumping Station	Drought Relief PS	Pumping Station	Water Corporation	Operations Manager 0488900452	Loss of community water supply
Water Pumping Station	Turkey Nest Dam PS	Pumping Station	Water Corporation	Operations Manager 0488900452	Loss of community water supply

Item	Location	Description	Owner	Contact Details	Community Impact Description
Water Pumping Station	Lake Grace North	Pumping Station	Water Corporation	Operations Manager 0488900452	Loss of community water supply
Water Pumping Station	Varley	Pumping Station	Water Corporation	Operations Manager 0488900452	Loss of community water supply
Water Pumping Station	Dam 02 Lake Grace	Pumping Station	Water Corporation	Operations Manager 0488900452	Loss of community water supply
Water Pumping Station	Lake Grace	Pumping Station	Water Corporation	Operations Manager 0488900452	Loss of community water supply
Water Pumping Station	Railway Dam PS	Pumping Station	Water Corporation	Operations Manager 0488900452	Loss of community water supply
Water Treatment Plant	Carstairs Road CDP	Water Treatment Plant	Water Corporation	Operations Manager 0488900452	Loss of community-based sanitation capability
Water Treatment Plant	Lake King	Water Treatment Plant	Water Corporation	Operations Manager 0488900452	Loss of community-based sanitation capability
Water Treatment Plant	Newdegate	Water Treatment Plant	Water Corporation	Operations Manager 0488900452	Loss of community-based sanitation capability
Water Treatment Plant	North Lake Grace	Water Treatment Plant	Water Corporation	Operations Manager 0488900452	Loss of community-based sanitation capability

Item	Location	Description	Owner	Contact Details	Community Impact Description
Water Treatment Plant	Lake Grace CDP	Water Treatment Plant	Water Corporation	Operations Manager 0488900452	Loss of community-based sanitation capability
Water Treatment Plant	Lake Grace	Water Treatment Plant	Water Corporation	Operations Manager 0488900452	Loss of community-based sanitation capability
Sewerage Treatment Plant	Lake Grace	Sewerage Treatment Plant	Shire of Lake Grace	Infrastructure Manager 0448089092	Loss of community-based sanitation capability
Sewerage Treatment Plant	Newdegate	Sewerage Treatment Plant	Water Corporation	Operations Manager 0488900452	Loss of community-based sanitation capability
DFES WAERN Repeater	Lake Grace East	Radio Repeater Tower for WAERN	DFES	DFES ICT Service Desk (08) 9395 9489	Loss of emergency services communication
DFES WAERN Repeater	Lake Grace West	Radio Repeater Tower for WAERN	DFES	DFES ICT Service Desk (08) 9395 9489	Loss of emergency services communication
WAPOL Comms Site	Mallee Hill	WAPOL Comms Site	WA Police Force	Local Emergency Coordinator (WAPF OIC)	Loss of emergency services communication
WAPOL Comms Site	McNamara	WAPOL Comms Site	WA Police Force	Local Emergency Coordinator (WAPF OIC)	Loss of emergency services communication
WAPOL Comms Site	Lake Magenta	WAPOL Comms Site	WA Police Force	Local Emergency Coordinator (WAPF OIC)	Loss of emergency services communication

Item	Location	Description	Owner	Contact Details	Community Impact Description
WAPOL Comms Site	Mt Madden	WAPOL Comms Site	WA Police Force	Local Emergency Coordinator (WAPF OIC)	Loss of emergency services communication
WAPOL Comms Site	Newdegate	WAPOL Comms Site	WA Police Force	Local Emergency Coordinator (WAPF OIC)	Loss of emergency services communication
WAPOL Comms Site	Lake Grace North	WAPOL Comms Site	WA Police Force	Local Emergency Coordinator (WAPF OIC)	Loss of emergency services communication
SJWA Comms Site	Lake Grace	SJWA Comms Site	SJWA	SJWA 93341222	Loss of emergency services communication
SJWA Comms Site	District Hospital Lake Grace	SJWA Comms Site	SJWA	SJWA 93341222	Loss of emergency services communication
TELSTRA Site	Newdegate	TELSTRA Site	TELSTRA	Emergency Services Liaison eslo.wa@team.telstra.com	Loss of emergency warnings and comms.
TELSTRA Site	Lake King	TELSTRA Site	TELSTRA	Emergency Services Liaison eslo.wa@team.telstra.com	Loss of emergency warnings and comms.
TELSTRA Site	Newdegate	TELSTRA Site	TELSTRA	Emergency Services Liaison eslo.wa@team.telstra.com	Loss of emergency warnings and comms.
TELSTRA Site	Lake Grace	TELSTRA Site	TELSTRA	Emergency Services Liaison eslo.wa@team.telstra.com	Loss of emergency warnings and comms.

Item	Location	Description	Owner	Contact Details	Community Impact Description
TELSTRA Site	Newdegate	TELSTRA Site	TELSTRA	Emergency Services Liaison eslo.wa@team.telstra.com	Loss of emergency warnings and comms.
TELSTRA Site	Newdegate	TELSTRA Site	TELSTRA	Emergency Services Liaison eslo.wa@team.telstra.com	Loss of emergency warnings and comms.
TELSTRA Site	Vernon Road	TELSTRA Site	TELSTRA	Emergency Services Liaison eslo.wa@team.telstra.com	Loss of emergency warnings and comms.
TELSTRA Site	Mt Madden	TELSTRA Site	TELSTRA	Emergency Services Liaison eslo.wa@team.telstra.com	Loss of emergency warnings and comms.
TELSTRA Site	Lake Grace	TELSTRA Site	TELSTRA	Emergency Services Liaison eslo.wa@team.telstra.com	Loss of emergency warnings and comms.
TELSTRA Site	Newdegate	TELSTRA Site	TELSTRA	Emergency Services Liaison eslo.wa@team.telstra.com	Loss of emergency warnings and comms.
TELSTRA Site	Newdegate	TELSTRA Site	TELSTRA	Emergency Services Liaison eslo.wa@team.telstra.com	Loss of emergency warnings and comms.
TELSTRA Site	Lake Grace	TELSTRA Site	TELSTRA	Emergency Services Liaison eslo.wa@team.telstra.com	Loss of emergency warnings and comms.
TELSTRA Site	Lake King	TELSTRA Site	TELSTRA	Emergency Services Liaison eslo.wa@team.telstra.com	Loss of emergency warnings and comms.

Item	Location	Description	Owner	Contact Details	Community Impact Description
TELSTRA Site	Lake Grace	TELSTRA Site	TELSTRA	Emergency Services Liaison eslo.wa@team.telstra.com	Loss of emergency warnings and comms.
TELSTRA Site	Lake Grace	TELSTRA Site	TELSTRA	Emergency Services Liaison eslo.wa@team.telstra.com	Loss of emergency warnings and comms.

Appendix B: At-Risk Groups Register

Shire of Dumbleyung

Name	Description	Address	Contact 1	Contact 2	Number of People	Details
Dumbleyung Primary School	Primary School	49 Taylor Street Dumbleyung WA 6350	Mrs Melanie Ball, Principle W: 9863 2500 M: 0439 970 969	Mrs Sophie Justins Man. Corp. Services M: 0408 916 329	56 students 14 staff	Incident Management Plan provided to LEMC.
Dumbleyung Family Day Care	Childcare	24 Harvey Street Dumbleyung WA 6350	Mrs Dyan Treloar W: 0438 935 346	N/A	1 Staff 12 children	Incident Management Plan provided to Shire of Dumbleyung.
Kukerin Primary School	Primary School	10 Bennett Street Kukerin WA 6352	Mrs Sarah Grande Principal W: 9864 3500	Mrs Deborah Doney Man. Corp. Services	32 students 11 staff	Incident Management Plan provided to LEMC.

Name	Description	Address	Contact 1	Contact 2	Number of People	Details
			M: 0427 707 766	M: 0427 812 236		
Dumbleyung District Memorial Hospital	Hospital including in-patient care.	34 McIntyre Street Dumbleyung WA 6350	Mrs Jane Smith Senior Nurse W: 9863 5222	Mrs Felicity Htun Director of Nursing W: 9861 3444	< 20 Staff 5 patients	Incident Management Plan provided to LEMC.

Shire of Kent

Name	Description	Address	Contact 1	Contact 2	Number of People	Details
Nyabing Primary School	Primary School	Hobley Street Nyabing WA 6341	Mrs Teresa Wigg Principal W: 08 6866 1750 M: 0460 013 018	Mrs Jodie Thompson Man. Corp. Services W: 08 6866 1750 M: 0460 013 018	34 students 12 staff	Incident Management Plan provided to LEMC.
Pingrup Primary School	Primary School	Carrie Street Pingrup WA 6343	Mrs Nerida Campbell Principal W: 08 6851 4700	Mrs Kate Hawley Man. Corp. Services W: 08 6851 4700	18 students 7 staff	Incident Management Plan provided to LEMC.
Nyabing Family Daycare	Childcare	Nyabing CWA 10 Richmond Street	Gnowangerup Family	N/A	<10 children 3 staff	Plan to be provided to local government.

Name	Description	Address	Contact 1	Contact 2	Number of People	Details
		Nyabing WA 6341	Support Association Mrs Penny Wells W: 9827 1454			

Shire of Lake Grace

Name	Description	Address	Contact 1	Contact 2	Number of People	Details
Lake King Primary School	Primary School	Ravensthorpe/Newdegate Road Lake King WA 6356	Dominic Daly Principal W: 08 6872 0050	Mrs Giovanna Brooks Man. Corp. Service W: 08 6872 0050	13 staff 37 students	Incident Management Plan provided to LEMC.
Lake Grace District High School	Primary and High School	1 School Place Lake Grace WA 6353	Mrs Kerriane Mills Principal W: 08 9865 4500 M: 0427 909 198	Mrs Michelle Lay Man. Corp. Services M: 0429 651 424	Staff 126 students	Incident Management Plan provided to LEMC.
Lake Grace Early Learning Centre	Child care	Griffiths Street Lake Grace WA 6353	Reception W: 0439 234 285	Mrs Felicity Slarke	4 staff <19 student	Plan to be provided to local government.
Newdegate Primary School	Primary School	Mitchell Street Newdegate WA 6355	Mrs Judith Garlick Principal	Mrs Rosalind Lloyd	17 staff 46 students	Incident Management

Name	Description	Address	Contact 1	Contact 2	Number of People	Details
			W: 08 9871 2200	Man. Corp. Services W: 08 9871 2200 M: 0428 711 534		Plan provided to LEMC.
Newdegate Day Care	Childcare	Newdegate Pavilion Lot 154 Lake Grace Road Newdegate WA 6355	Gnowangerup Family Support Association Mrs Penny Wells W: 9827 1454		2 staff <19 children	Plan to be provided to local government.
Lake Grace Hospital	Hospital	Stubbs Street Lake Grace WA 6353	Mrs Lisa Pearce Health Services Manager W: 9890 2222 M: 0428 518 026	Hospital Administration W: 9890 2222	9 staff 9 patients	Plan to be provided to local government.

Appendix C: Risk Register

Shire of Dumbleyung Risk Register [Extreme and High only]

DUMBLEYUNG RISK REGISTER [2025]							
RISK STATEMENT	HAZARD	RISK LEVEL	PRIORITY	TREATMENT ACTION	TREATMENT STRATEGIES	RISK/TREATMENT OWNER	TREATMENT COMMENTS
There is a risk that a bush fire event will impact the health of people and cause death(s).	Fire	Extreme	2	Treat (Recommended action)	Refer to DB Risk Treatment Plan - Fire [Extreme]	Refer to DB Risk Treatment Plan - Fire [Extreme]	Refer to DB Risk Treatment Plan - Fire [Extreme]
There is a risk that a bush fire event will impact mobile and landline communication infrastructure, impacting the ability of telecommunication companies to maintain core services.	Fire	Extreme	2	Treat (Recommended action)	Refer to DB Risk Treatment Plan - Fire [Extreme]	Refer to DB Risk Treatment Plan - Fire [Extreme]	Refer to DB Risk Treatment Plan - Fire [Extreme]
There is a risk that a bush fire event will impact the health of people and cause injury and/or serious illness.	Fire	High	2	Treat (Recommended action)	Refer to DB Risk Treatment Plan - Fire [High]	Refer to DB Risk Treatment Plan - Fire [High]	Refer to DB Risk Treatment Plan - Fire [High]
There is a risk that a bush fire event will impact the health of people and cause long term sickness (mental and/or physical) and/or recovery.	Fire	High	2	Treat (Recommended action)	Refer to DB Risk Treatment Plan - Fire [High]	Refer to DB Risk Treatment Plan - Fire [High]	Refer to DB Risk Treatment Plan - Fire [High]

There is a risk that a bush fire event will cause an increased demand (surge) on emergency services at the local level (incl. bush fire, SJA, and WA Police Force), impacting their ability to maintain core services.	Fire	High	2	Treat (Recommended action)	Refer to DB Risk Treatment Plan - Fire [High]	Refer to DB Risk Treatment Plan - Fire [High]	Refer to DB Risk Treatment Plan - Fire [High]
There is a risk that a bush fire event will impact on crops/cropping/plantations (and/or expected harvests), resulting in financial losses.	Fire	High	2	Treat (Recommended action)	Refer to DB Risk Treatment Plan - Fire [High]	Refer to DB Risk Treatment Plan - Fire [High]	Refer to DB Risk Treatment Plan - Fire [High]
There is a risk that a bush fire event will impact on private and/or commercial buildings, contents and services, resulting in financial losses.	Fire	High	2	Treat (Recommended action)	Refer to DB Risk Treatment Plan - Fire [High]	Refer to DB Risk Treatment Plan - Fire [High]	Refer to DB Risk Treatment Plan - Fire [High]
There is a risk that a storm event will require recovery works to be undertaken by local government, impacting their ability to maintain core services.	Storm	High	2	Treat (Recommended action)	Refer to DB Risk Treatment Plan - Storm [High]	Refer to DB Risk Treatment Plan - Storm [High]	Refer to DB Risk Treatment Plan - Storm [High]
There is a risk that a severe flood event will impact main road transport routes, resulting in repair costs and/or financial losses.	Flood	High	2	Treat (Recommended action)	Refer to DB Risk Treatment Plan - Flood [High]	Refer to DB Risk Treatment Plan - Flood [High]	Refer to DB Risk Treatment Plan - Flood [High]
There is a risk that a severe flood event will impact mobile and landline communication	Flood	High	2	Treat (Recommended action)	Refer to DB Risk Treatment Plan - Flood [High]	Refer to DB Risk Treatment Plan - Flood [High]	Refer to DB Risk Treatment Plan - Flood [High]

infrastructure, impacting the ability of telecommunication companies to maintain core services.							
There is a risk that a HazMat event will impact the health of people and cause death(s).	Other substances - HAZMAT	High	2	Treat (Recommended action)	Refer to DB Risk Treatment Plan - HazMat [High]	Refer to DB Risk Treatment Plan - HazMat [High]	Refer to DB Risk Treatment Plan - HazMat [High]
There is a risk that a HazMat event will impact the health of people and cause injury and/or serious illness.	Other substances - HAZMAT	High	2	Treat (Recommended action)	Refer to DB Risk Treatment Plan - HazMat [High]	Refer to DB Risk Treatment Plan - HazMat [High]	Refer to DB Risk Treatment Plan - HazMat [High]
There is a risk that a HazMat event will disrupt business activities, and impact private buildings and contents, and/or commercial buildings, contents and services, resulting in financial losses.	Other substances - HAZMAT	High	2	Treat (Recommended action)	Refer to DB Risk Treatment Plan - HazMat [High]	Refer to DB Risk Treatment Plan - HazMat [High]	Refer to DB Risk Treatment Plan - HazMat [High]
There is a risk that a HazMat event will cause contamination to the surrounding environment from the release of toxic substances.	Other substances - HAZMAT	High	2	Treat (Recommended action)	Refer to DB Risk Treatment Plan - HazMat [High]	Refer to DB Risk Treatment Plan - HazMat [High]	Refer to DB Risk Treatment Plan - HazMat [High]
There is a risk that an outbreak of foot and mouth disease will impact the health of people and wellbeing of the community.	Animal or plant: pests or diseases	High	3	Treat (Recommended action)	Refer to DB Risk Treatment Plan - Animal or Plant Biosecurity	Refer to DB Risk Treatment Plan - Animal or Plant Biosecurity	Refer to DB Risk Treatment Plan - Animal or Plant Biosecurity

There is a risk that an outbreak of foot and mouth disease will impact private and/or commercial business and services, resulting in financial losses.	Animal or plant: pests or diseases	High	3	Treat (Recommended action)	Refer to DB Risk Treatment Plan - Animal or Plant Biosecurity	Refer to DB Risk Treatment Plan - Animal or Plant Biosecurity	Refer to DB Risk Treatment Plan - Animal or Plant Biosecurity
There is a risk that an outbreak of foot and mouth disease will impact the agricultural industry, resulting in recovery costs and/or financial losses.	Animal or plant: pests or diseases	High	3	Treat (Recommended action)	Refer to DB Risk Treatment Plan - Animal or Plant Biosecurity	Refer to DB Risk Treatment Plan - Animal or Plant Biosecurity	Refer to DB Risk Treatment Plan - Animal or Plant Biosecurity
There is a risk that an outbreak of foot and mouth disease will cause displacement, death or injury to animals, impacting the wellbeing of the community.	Animal or plant: pests or diseases	High	3	Treat (Recommended action)	Refer to DB Risk Treatment Plan - Animal or Plant Biosecurity	Refer to DB Risk Treatment Plan - Animal or Plant Biosecurity	Refer to DB Risk Treatment Plan - Animal or Plant Biosecurity
There is a risk that an outbreak of foot and mouth disease will result in a loss of income and/or employment, impacting the wellbeing of the community.	Animal or plant: pests or diseases	High	3	Treat (Recommended action)	Refer to DB Risk Treatment Plan - Animal or Plant Biosecurity	Refer to DB Risk Treatment Plan - Animal or Plant Biosecurity	Refer to DB Risk Treatment Plan - Animal or Plant Biosecurity
There is a risk that a storm event will impact power infrastructure, impacting the power company's ability to maintain core services.	Storm	High	3	Treat (Recommended action)	Refer to DB Risk Treatment Plan - Storm [High]	Refer to DB Risk Treatment Plan - Storm [High]	Refer to DB Risk Treatment Plan - Storm [High]
There is a risk that a severe flood event will impact on livestock (through death,	Flood	High	3	Treat (Recommended action)	Refer to DB Risk Treatment Plan - Flood [High]	Refer to DB Risk Treatment Plan - Flood [High]	Refer to DB Risk Treatment Plan - Flood [High]

injury, loss of pasture), resulting in financial losses.							
There is a risk that a severe flood event will impact on crops, cropping, plantations (and harvests), resulting in financial losses.	Flood	High	3	Treat (Recommended action)	Refer to DB Risk Treatment Plan - Flood [High]	Refer to DB Risk Treatment Plan - Flood [High]	Refer to DB Risk Treatment Plan - Flood [High]
There is a risk that a severe flood event will impact agricultural industry infrastructure (fencing, machinery, grain stores), resulting in recovery costs and/or financial losses.	Flood	High	3	Treat (Recommended action)	Refer to DB Risk Treatment Plan - Flood [High]	Refer to DB Risk Treatment Plan - Flood [High]	Refer to DB Risk Treatment Plan - Flood [High]
There is a risk that a severe flood event will require recovery works to be undertaken by the local government, impacting upon their ability to maintain core services.	Flood	High	3	Treat (Recommended action)	Refer to DB Risk Treatment Plan - Flood [High]	Refer to DB Risk Treatment Plan - Flood [High]	Refer to DB Risk Treatment Plan - Flood [High]
There is a risk that a HazMat event will cause emergency services (incl. SJA, RFDSWA, WA Health) to be overwhelmed, resulting in further medical impacts.	Other substances - HAZMAT	High	3	Treat (Recommended action)	Refer to DB Risk Treatment Plan - HazMat [High]	Refer to DB Risk Treatment Plan - HazMat [High]	Refer to DB Risk Treatment Plan - HazMat [High]
There is a risk that a HazMat event will cause an increased demand (surge) on emergency services (incl. DFES, SJA, WA Police	Other substances - HAZMAT	High	3	Treat (Recommended action)	Refer to DB Risk Treatment Plan - HazMat [High]	Refer to DB Risk Treatment Plan - HazMat [High]	Refer to DB Risk Treatment Plan - HazMat [High]

Force, WA Health) at the local level, impacting their ability to maintain core services.						
--	--	--	--	--	--	--

Shire of Kent Risk Register [Extreme and High only]

KENT RISK REGISTER [2025]							
RISK STATEMENT	HAZARD	RISK LEVEL	PRIORITY	TREATMENT ACTION	TREATMENT STRATEGIES	RISK/TREATMENT OWNER	TREATMENT COMMENTS
There is a risk that a bush fire event will impact the health of people and cause long term sickness (mental and/or physical) and/or recovery.	Fire	Extreme	2	Treat (Recommended action)	Refer to LG Risk Treatment Plan - Fire [Extreme]	Refer to LG Risk Treatment Plan - Fire [Extreme]	Refer to LG Risk Treatment Plan - Fire [Extreme]
There is a risk that a bush fire event will cause an increased demand (surge) on emergency services at the local level (incl. bush fire, SJA, and WA Police Force), impacting their ability to maintain core services.	Fire	Extreme	2	Treat (Recommended action)	Refer to LG Risk Treatment Plan - Storm [Extreme]	Refer to LG Risk Treatment Plan - Storm [Extreme]	Refer to LG Risk Treatment Plan - Storm [Extreme]
There is a risk that a bush fire event will impact on crops/cropping/plantations (and/or expected harvests), resulting in financial losses.	Fire	Extreme	2	Treat (Recommended action)	Refer to LG Risk Treatment Plan - Fire [Extreme]	Refer to LG Risk Treatment Plan - Fire [Extreme]	Refer to LG Risk Treatment Plan - Fire [Extreme]
There is a risk that a severe flood event will impact main road transport routes,	Flood	Extreme	2	Treat (Recommended action)	Refer to LG Risk Treatment Plan - Fire [Extreme]	Refer to LG Risk Treatment Plan - Fire [Extreme]	Refer to LG Risk Treatment Plan - Fire [Extreme]

resulting in repair costs and/or financial losses.							
There is a risk that a severe flood event will result in soil erosion in flood plains and river catchment areas.	Flood	Extreme	2	Treat (Recommended action)	Refer to LG Risk Treatment Plan - Road Crash [Extreme]	Refer to LG Risk Treatment Plan - Road Crash [Extreme]	Refer to LG Risk Treatment Plan - Road Crash [Extreme]
There is a risk that an outbreak of foot and mouth disease will impact private and/or commercial business and services, resulting in financial losses.	Animal or plant: pests or diseases	High	2	Treat (Recommended action)	Refer to LG Risk Treatment Plan - Animal or Plant Biosecurity [High]	Refer to LG Risk Treatment Plan - Animal or Plant Biosecurity [High]	Refer to LG Risk Treatment Plan - Animal or Plant Biosecurity [High]
There is a risk that an outbreak of foot and mouth disease will result in the breakdown of existing family and support networks (incl. social networks), impacting the wellbeing of the community.	Animal or plant: pests or diseases	High	2	Treat (Recommended action)	Refer to LG Risk Treatment Plan - Animal or Plant Biosecurity [High]	Refer to LG Risk Treatment Plan - Animal or Plant Biosecurity [High]	Refer to LG Risk Treatment Plan - Animal or Plant Biosecurity [High]
There is a risk that a bush fire event will impact the health of people and cause death(s).	Fire	High	2	Treat (Recommended action)	Refer to LG Risk Treatment Plan - Fire [High]	Refer to LG Risk Treatment Plan - Fire [High]	Refer to LG Risk Treatment Plan - Fire [High]
There is a risk that a bush fire event will impact the health of people and cause injury and/or serious illness.	Fire	High	2	Treat (Recommended action)	Refer to LG Risk Treatment Plan - Fire [High]	Refer to LG Risk Treatment Plan - Fire [High]	Refer to LG Risk Treatment Plan - Fire [High]
There is a risk that a bush fire event will impact on private and/or commercial buildings, contents and	Fire	High	2	Treat (Recommended action)	Refer to LG Risk Treatment Plan - Fire [High]	Refer to LG Risk Treatment Plan - Fire [High]	Refer to LG Risk Treatment Plan - Fire [High]

services, resulting in financial losses.							
There is a risk that a storm event will impact private and/or commercial buildings and/or contents, and services, resulting in financial losses.	Storm	High	2	Treat (Recommended action)	Refer to LG Risk Treatment Plan - Fire [High]	Refer to LG Risk Treatment Plan - Fire [High]	Refer to LG Risk Treatment Plan - Fire [High]
There is a risk that a storm event will disrupt business activities, resulting in financial losses.	Storm	High	2	Treat (Recommended action)	Refer to LG Risk Treatment Plan - Storm [High]	Refer to LG Risk Treatment Plan - Storm [High]	Refer to LG Risk Treatment Plan - Storm [High]
There is a risk that a storm event will require recovery works to be undertaken by local government, impacting their ability to maintain core services.	Storm	High	2	Treat (Recommended action)	Refer to LG Risk Treatment Plan - Storm [High]	Refer to LG Risk Treatment Plan - Storm [High]	Refer to LG Risk Treatment Plan - Storm [High]
There is a risk that a storm event will impact power infrastructure, impacting the power company's ability to maintain core services.	Storm	High	2	Treat (Recommended action)	Refer to LG Risk Treatment Plan - Storm [High]	Refer to LG Risk Treatment Plan - Storm [High]	Refer to LG Risk Treatment Plan - Storm [High]
There is a risk that a severe flood event will impact on livestock (through death, injury, loss of pasture), resulting in financial losses.	Flood	High	2	Treat (Recommended action)	Refer to LG Risk Treatment Plan - Storm [High]	Refer to LG Risk Treatment Plan - Storm [High]	Refer to LG Risk Treatment Plan - Storm [High]
There is a risk that a severe flood event will impact on crops, cropping, plantations (and harvests),	Flood	High	2	Treat (Recommended action)	Refer to LG Risk Treatment Plan - Flood [High]	Refer to LG Risk Treatment Plan - Flood [High]	Refer to LG Risk Treatment Plan - Flood [High]

resulting in financial losses.							
There is a risk that a severe flood event will impact bridges and/or approaches to bridges, resulting in repair costs.	Flood	High	2	Treat (Recommended action)	Refer to LG Risk Treatment Plan - Flood [High]	Refer to LG Risk Treatment Plan - Flood [High]	Refer to LG Risk Treatment Plan - Flood [High]
There is a risk that a severe flood event will impact agricultural industry infrastructure (fencing, machinery, grain stores), resulting in recovery costs and/or financial losses.	Flood	High	2	Treat (Recommended action)	Refer to LG Risk Treatment Plan - Flood [High]	Refer to LG Risk Treatment Plan - Flood [High]	Refer to LG Risk Treatment Plan - Flood [High]
There is a risk that a severe flood event will impact mobile and landline communication infrastructure, impacting the ability of telecommunication companies to maintain core services.	Flood	High	2	Treat (Recommended action)	Refer to LG Risk Treatment Plan - Flood [High]	Refer to LG Risk Treatment Plan - Flood [High]	Refer to LG Risk Treatment Plan - Flood [High]
There is a risk that a severe flood event will require recovery works to be undertaken by the local government, impacting upon their ability to maintain core services.	Flood	High	2	Treat (Recommended action)	Refer to LG Risk Treatment Plan - Flood [High]	Refer to LG Risk Treatment Plan - Flood [High]	Refer to LG Risk Treatment Plan - Flood [High]
There is a risk that a severe flood event will cause displacement, death or injury to animals,	Flood	High	2	Treat (Recommended action)	Refer to LG Risk Treatment Plan - Flood [High]	Refer to LG Risk Treatment Plan - Flood [High]	Refer to LG Risk Treatment Plan - Flood [High]

impacting the wellbeing of the community.							
There is a risk that an outbreak of foot and mouth disease will impact the agricultural industry, resulting in recovery costs and/or financial losses.	Animal or plant: pests or diseases	High	3	Treat (Recommended action)	Refer to LG Risk Treatment Plan - Flood [High]	Refer to LG Risk Treatment Plan - Flood [High]	Refer to LG Risk Treatment Plan - Flood [High]
There is a risk that an outbreak of foot and mouth disease will impact tourism and planned major events, resulting in financial losses.	Animal or plant: pests or diseases	High	3	Treat (Recommended action)	Refer to LG Risk Treatment Plan - Flood [High]	Refer to LG Risk Treatment Plan - Flood [High]	Refer to LG Risk Treatment Plan - Flood [High]
There is a risk that an outbreak of foot and mouth disease will cause displacement, death or injury to animals, impacting the wellbeing of the community.	Animal or plant: pests or diseases	High	3	Treat (Recommended action)	Refer to LG Risk Treatment Plan - Flood [High]	Refer to LG Risk Treatment Plan - Flood [High]	Refer to LG Risk Treatment Plan - Flood [High]
There is a risk that an outbreak of foot and mouth disease will result in a loss of income and/or employment, impacting the wellbeing of the community.	Animal or plant: pests or diseases	High	3	Treat (Recommended action)	Refer to LG Risk Treatment Plan - Road Crash [High]	Refer to LG Risk Treatment Plan - Road Crash [High]	Refer to LG Risk Treatment Plan - Road Crash [High]
There is a risk that an outbreak of foot and mouth disease will impact state government agencies at the local level, and local government offices, works depots and facilities,	Animal or plant: pests or diseases	High	3	Treat (Recommended action)	Refer to LG Risk Treatment Plan - Road Crash [High]	Refer to LG Risk Treatment Plan - Road Crash [High]	Refer to LG Risk Treatment Plan - Road Crash [High]

impacting the ability to maintain core services.							
There is a risk that a bush fire event will impact mobile and landline communication infrastructure, impacting the ability of telecommunication companies to maintain core services.	Fire	High	3	Treat (Recommended action)	Refer to LG Risk Treatment Plan - Road Crash [High]	Refer to LG Risk Treatment Plan - Road Crash [High]	Refer to LG Risk Treatment Plan - Road Crash [High]
There is a risk that a storm event will impact the health of people and cause injury and/or serious illness.	Storm	High	3	Treat (Recommended action)	Refer to LG Risk Treatment Plan - Road Crash [High]	Refer to LG Risk Treatment Plan - Road Crash [High]	Refer to LG Risk Treatment Plan - Road Crash [High]

Shire of Lake Grace Risk Register [Extreme and High only]

LAKE GRACE RISK REGISTER [2025]							
RISK STATEMENT	HAZARD	RISK LEVEL	PRIORITY	TREATMENT ACTION	TREATMENT STRATEGIES	RISK/TREATMENT OWNER	TREATMENT COMMENTS
There is a risk that a bush fire event will impact the health of people and cause death(s).	Fire	Extreme	1	Treat (Recommended action)	Refer to LG Risk Treatment Plan - Fire [Extreme]	Refer to LG Risk Treatment Plan - Fire [Extreme]	Refer to LG Risk Treatment Plan - Fire [Extreme]
There is a risk that a storm event will impact the health of people and cause death(s).	Storm	Extreme	1	Treat (Recommended action)	Refer to LG Risk Treatment Plan - Storm [Extreme]	Refer to LG Risk Treatment Plan - Storm [Extreme]	Refer to LG Risk Treatment Plan - Storm [Extreme]
There is a risk that a bush fire event will impact the health of people and cause	Fire	Extreme	2	Treat (Recommended action)	Refer to LG Risk Treatment Plan - Fire [Extreme]	Refer to LG Risk Treatment Plan - Fire [Extreme]	Refer to LG Risk Treatment Plan - Fire [Extreme]

injury and/or serious illness.							
There is a risk that a bush fire event will impact mobile and landline communication infrastructure, impacting the ability of telecommunication companies to maintain core services.	Fire	Extreme	2	Treat (Recommended action)	Refer to LG Risk Treatment Plan - Fire [Extreme]	Refer to LG Risk Treatment Plan - Fire [Extreme]	Refer to LG Risk Treatment Plan - Fire [Extreme]
There is a risk that a road crash event will impact the health of people and cause death(s).	Road crash	Extreme	2	Treat (Recommended action)	Refer to LG Risk Treatment Plan - Road Crash [Extreme]	Refer to LG Risk Treatment Plan - Road Crash [Extreme]	Refer to LG Risk Treatment Plan - Road Crash [Extreme]
There is a risk that a HazMat event will impact the health of people and cause death(s).	Other substances - HAZMAT	Extreme	2	Treat (Recommended action)	Refer to LG Risk Treatment Plan - HazMat [Extreme]	Refer to LG Risk Treatment Plan - HazMat [Extreme]	Refer to LG Risk Treatment Plan - HazMat [Extreme]
There is a risk that an outbreak of foot and mouth disease will impact tourism and planned major events, resulting in financial losses.	Animal or plant: pests or diseases	High	2	Treat (Recommended action)	Refer to LG Risk Treatment Plan - Animal or Plant Biosecurity [High]	Refer to LG Risk Treatment Plan - Animal or Plant Biosecurity [High]	Refer to LG Risk Treatment Plan - Animal or Plant Biosecurity [High]
There is a risk that an outbreak of foot and mouth disease will cause displacement, death or injury to animals, impacting the wellbeing of the community.	Animal or plant: pests or diseases	High	2	Treat (Recommended action)	Refer to LG Risk Treatment Plan - Animal or Plant Biosecurity [High]	Refer to LG Risk Treatment Plan - Animal or Plant Biosecurity [High]	Refer to LG Risk Treatment Plan - Animal or Plant Biosecurity [High]
There is a risk that a bush fire event will impact the health of people and cause	Fire	High	2	Treat (Recommended action)	Refer to LG Risk Treatment Plan - Fire [High]	Refer to LG Risk Treatment Plan - Fire [High]	Refer to LG Risk Treatment Plan - Fire [High]

long term sickness (mental and/or physical) and/or recovery.							
There is a risk that a bush fire event will cause an increased demand (surge) on emergency services at the local level (incl. bush fire, SJA, and WA Police Force), impacting their ability to maintain core services.	Fire	High	2	Treat (Recommended action)	Refer to LG Risk Treatment Plan - Fire [High]	Refer to LG Risk Treatment Plan - Fire [High]	Refer to LG Risk Treatment Plan - Fire [High]
There is a risk that a bush fire event will impact on crops/cropping/plantations (and/or expected harvests), resulting in financial losses.	Fire	High	2	Treat (Recommended action)	Refer to LG Risk Treatment Plan - Fire [High]	Refer to LG Risk Treatment Plan - Fire [High]	Refer to LG Risk Treatment Plan - Fire [High]
There is a risk that a bush fire event will impact on private and/or commercial buildings, contents and services, resulting in financial losses.	Fire	High	2	Treat (Recommended action)	Refer to LG Risk Treatment Plan - Fire [High]	Refer to LG Risk Treatment Plan - Fire [High]	Refer to LG Risk Treatment Plan - Fire [High]
There is a risk that a storm event will impact the health of people and cause injury and/or serious illness.	Storm	High	2	Treat (Recommended action)	Refer to LG Risk Treatment Plan - Storm [High]	Refer to LG Risk Treatment Plan - Storm [High]	Refer to LG Risk Treatment Plan - Storm [High]
There is a risk that a storm event will impact private and/or commercial buildings and/or contents, and services, resulting in financial losses.	Storm	High	2	Treat (Recommended action)	Refer to LG Risk Treatment Plan - Storm [High]	Refer to LG Risk Treatment Plan - Storm [High]	Refer to LG Risk Treatment Plan - Storm [High]

There is a risk that a storm event will impact power infrastructure, impacting the power company's ability to maintain core services.	Storm	High	2	Treat (Recommended action)	Refer to LG Risk Treatment Plan - Storm [High]	Refer to LG Risk Treatment Plan - Storm [High]	Refer to LG Risk Treatment Plan - Storm [High]
There is a risk that a storm event will impact residential dwellings and contents, impacting the wellbeing of the community.	Storm	High	2	Treat (Recommended action)	Refer to LG Risk Treatment Plan - Storm [High]	Refer to LG Risk Treatment Plan - Storm [High]	Refer to LG Risk Treatment Plan - Storm [High]
There is a risk that a severe flood event will impact main road transport routes, resulting in repair costs and/or financial losses.	Flood	High	2	Treat (Recommended action)	Refer to LG Risk Treatment Plan - Flood [High]	Refer to LG Risk Treatment Plan - Flood [High]	Refer to LG Risk Treatment Plan - Flood [High]
There is a risk that a severe flood event will impact on livestock (through death, injury, loss of pasture), resulting in financial losses.	Flood	High	2	Treat (Recommended action)	Refer to LG Risk Treatment Plan - Flood [High]	Refer to LG Risk Treatment Plan - Flood [High]	Refer to LG Risk Treatment Plan - Flood [High]
There is a risk that a severe flood event will impact on crops, cropping, plantations (and harvests), resulting in financial losses.	Flood	High	2	Treat (Recommended action)	Refer to LG Risk Treatment Plan - Flood [High]	Refer to LG Risk Treatment Plan - Flood [High]	Refer to LG Risk Treatment Plan - Flood [High]
There is a risk that a severe flood event will impact agricultural industry infrastructure (fencing, machinery, grain stores), resulting in	Flood	High	2	Treat (Recommended action)	Refer to LG Risk Treatment Plan - Flood [High]	Refer to LG Risk Treatment Plan - Flood [High]	Refer to LG Risk Treatment Plan - Flood [High]

recovery costs and/or financial losses.							
There is a risk that a severe flood event will impact mobile and landline communication infrastructure, impacting the ability of telecommunication companies to maintain core services.	Flood	High	2	Treat (Recommended action)	Refer to LG Risk Treatment Plan - Flood [High]	Refer to LG Risk Treatment Plan - Flood [High]	Refer to LG Risk Treatment Plan - Flood [High]
There is a risk that a severe flood event will require recovery works to be undertaken by the local government, impacting upon their ability to maintain core services.	Flood	High	2	Treat (Recommended action)	Refer to LG Risk Treatment Plan - Flood [High]	Refer to LG Risk Treatment Plan - Flood [High]	Refer to LG Risk Treatment Plan - Flood [High]
There is a risk that a severe flood event will impact the health of people due to stagnant water and water-borne diseases and cause serious illness.	Flood	High	2	Treat (Recommended action)	Refer to LG Risk Treatment Plan - Flood [High]	Refer to LG Risk Treatment Plan - Flood [High]	Refer to LG Risk Treatment Plan - Flood [High]
There is a risk that a severe flood event will cause displacement, death or injury to animals, impacting the wellbeing of the community.	Flood	High	2	Treat (Recommended action)	Refer to LG Risk Treatment Plan - Flood [High]	Refer to LG Risk Treatment Plan - Flood [High]	Refer to LG Risk Treatment Plan - Flood [High]
There is a risk that a severe flood event will result in a loss of income and/or employment, impacting the community wellbeing.	Flood	High	2	Treat (Recommended action)	Refer to LG Risk Treatment Plan - Flood [High]	Refer to LG Risk Treatment Plan - Flood [High]	Refer to LG Risk Treatment Plan - Flood [High]

There is a risk that a road crash event will impact the health of people and cause injury and/or serious illness.	Road crash	High	2	Treat (Recommended action)	Refer to LG Risk Treatment Plan - Road Crash [High]	Refer to LG Risk Treatment Plan - Road Crash [High]	Refer to LG Risk Treatment Plan - Road Crash [High]
There is a risk that a road crash event will impact the health of people and cause long term sickness (mental and/or physical) and/or recovery.	Road crash	High	2	Treat (Recommended action)	Refer to LG Risk Treatment Plan - Road Crash [High]	Refer to LG Risk Treatment Plan - Road Crash [High]	Refer to LG Risk Treatment Plan - Road Crash [High]
There is a risk that a road crash event will impact the health of people and cause emergency services (incl. SJA and RFDSWA) to be overwhelmed, resulting in further medical impact.	Road crash	High	2	Treat (Recommended action)	Refer to LG Risk Treatment Plan - Road Crash [High]	Refer to LG Risk Treatment Plan - Road Crash [High]	Refer to LG Risk Treatment Plan - Road Crash [High]
There is a risk that a road crash event will cause an increased demand (surge) on emergency services at the local level (incl. DFES, WA Police Force, and WA Health), impacting their ability to maintain core services.	Road crash	High	2	Treat (Recommended action)	Refer to LG Risk Treatment Plan - Road Crash [High]	Refer to LG Risk Treatment Plan - Road Crash [High]	Refer to LG Risk Treatment Plan - Road Crash [High]
There is a risk that a HazMat event will cause emergency services (incl. SJA, RFDSWA, WA Health) to be overwhelmed, resulting in further medical impacts.	Other substances - HAZMAT	High	2	Treat (Recommended action)	Refer to LG Risk Treatment Plan - HAZMAT [High]	Refer to LG Risk Treatment Plan - HAZMAT [High]	Refer to LG Risk Treatment Plan - HAZMAT [High]

There is a risk that a HazMat event will disrupt major freight routes, resulting in financial losses.	Other substances - HAZMAT	High	2	Treat (Recommended action)	Refer to LG Risk Treatment Plan - HAZMAT [High]	Refer to LG Risk Treatment Plan - HAZMAT [High]	Refer to LG Risk Treatment Plan - HAZMAT [High]
There is a risk that a rail crash event will cause an increased demand (surge) on emergency services at the local level (incl. DFES, WA Police Force, and WA Health), impacting their ability to maintain core services.	Rail crash	High	2	Treat (Recommended action)	Refer to LG Risk Treatment Plan - Rail Crash [High]	Refer to LG Risk Treatment Plan - Rail Crash [High]	Refer to LG Risk Treatment Plan - Rail Crash [High]
There is a risk that a rail crash event will impact the health of people and cause injury and/or serious illness.	Rail crash	High	2	Treat (Recommended action)	Refer to LG Risk Treatment Plan - Rail Crash [High]	Refer to LG Risk Treatment Plan - Rail Crash [High]	Refer to LG Risk Treatment Plan - Rail Crash [High]
There is a risk that a rail crash event will impact the health of people and cause emergency services (incl. of SJA and RFDSWA) to be overwhelmed, resulting in further medical impact.	Rail crash	High	2	Treat (Recommended action)	Refer to LG Risk Treatment Plan - Rail Crash [High]	Refer to LG Risk Treatment Plan - Rail Crash [High]	Refer to LG Risk Treatment Plan - Rail Crash [High]
There is a risk that an outbreak of foot and mouth disease will impact the agricultural industry, resulting in recovery costs and/or financial losses.	Animal or plant: pests or diseases	High	3	Treat (Recommended action)	Refer to LG Risk Treatment Plan - Animal or Plant Biosecurity [High]	Refer to LG Risk Treatment Plan - Animal or Plant Biosecurity [High]	Refer to LG Risk Treatment Plan - Animal or Plant Biosecurity [High]
There is a risk that a storm event will impact on the availability of basic commercial products and	Storm	High	3	Treat (Recommended action)	Refer to LG Risk Treatment Plan - Storm [High]	Refer to LG Risk Treatment Plan - Storm [High]	Refer to LG Risk Treatment Plan - Storm [High]

services, impacting community services and wellbeing.							
There is a risk that a severe flood event will impact the health of residents in the area and cause death or serious illness/injury, impacting the wellbeing of the community.	Flood	High	3	Treat (Recommended action)	Refer to LG Risk Treatment Plan - Flood [High]	Refer to LG Risk Treatment Plan - Flood [High]	Refer to LG Risk Treatment Plan - Flood [High]
There is a risk that a HazMat event will impact the health of people and cause injury and/or serious illness.	Other substances - HAZMAT	High	3	Treat (Recommended action)	Refer to LG Risk Treatment Plan - HAZMAT [High]	Refer to LG Risk Treatment Plan - HAZMAT [High]	Refer to LG Risk Treatment Plan - HAZMAT [High]
There is a risk that a HazMat event will cause an increased demand (surge) on emergency services (incl. DFES, SJA, WA Police Force, WA Health) at the local level, impacting their ability to maintain core services.	Other substances - HAZMAT	High	3	Treat (Recommended action)	Refer to LG Risk Treatment Plan - HAZMAT [High]	Refer to LG Risk Treatment Plan - HAZMAT [High]	Refer to LG Risk Treatment Plan - HAZMAT [High]
There is a risk that a HazMat event will result in long term displacement (>14days), due to evacuation away from homes and/or workplaces, impacting the community wellbeing.	Other substances - HAZMAT	High	3	Treat (Recommended action)	Refer to LG Risk Treatment Plan - HAZMAT [High]	Refer to LG Risk Treatment Plan - HAZMAT [High]	Refer to LG Risk Treatment Plan - HAZMAT [High]
There is a risk that a rail crash event will impact the health of people and cause death(s).	Rail crash	High	3	Treat (Recommended action)	Refer to LG Risk Treatment Plan - Rail Crash [High]	Refer to LG Risk Treatment Plan - Rail Crash [High]	Refer to LG Risk Treatment Plan - Rail Crash [High]

Appendix D: Resource Register

Shire of Lake Grace

Item description	Number of items	Contact Name	Contact Number
Loaders/Backhoes	5	Infrastructure Manager	0448 089 092
Tractors and attachments	8	Infrastructure Manager	0448 089 092
Graders	2	Infrastructure Manager	0448 089 092
Rollers	3	Infrastructure Manager	0448 089 092
Small Plant	3	Infrastructure Manager	0448 089 092
Light Vehicles	15	Infrastructure Manager	0448 089 092
Vehicle Trailers	14	Infrastructure Manager	0448 089 092
Trucks (BFB Fire Appliances)	3	Infrastructure Manager	0448 089 092
Trucks (general purpose)	11	Infrastructure Manager	0448 089 092
Truck Trailers	5	Infrastructure Manager	0448 089 092

Shire of Dumbleyung

Item description	Number of items	Contact Name	Contact Number
Loaders/Backhoes	5	Director of Infrastructure	0427 634 012
Tractors and attachments	5	Director of Infrastructure	0427 634 012
Graders	2	Director of Infrastructure	0427 634 012
Rollers/Compactors	3	Director of Infrastructure	0427 634 012
Small Plant	8	Director of Infrastructure	0427 634 012
Light Vehicles	11	Director of Infrastructure	0427 634 012
Vehicle Trailers	6	Director of Infrastructure	0427 634 012
Trucks (BFB Fire Appliances)	3	Director of Infrastructure	0427 634 012
Trucks (general purpose)	5	Director of Infrastructure	0427 634 012
Miscellaneous	6	Director of Infrastructure	0427 634 012

Shire of Kent

Item description	Number of items	Contact Name	Contact Number
Loaders/Backhoes	5	Infrastructure Manager	0429 993 987
Graders	4	Infrastructure Manager	0429 993 987
Rollers/Compactors	4	Infrastructure Manager	0429 993 987
Small Plant	10	Infrastructure Manager	0429 993 987
Light Vehicles	14	Infrastructure Manager	0429 993 987
Vehicle Trailers	15	Infrastructure Manager	0429 993 987
Trucks (BFB Fire Appliances)	2	Infrastructure Manager	0429 993 987
Trucks (general purpose)	5	Infrastructure Manager	0429 993 987
Miscellaneous	5	Infrastructure Manager	0429 993 987

Appendix E: Evacuation Centre Information

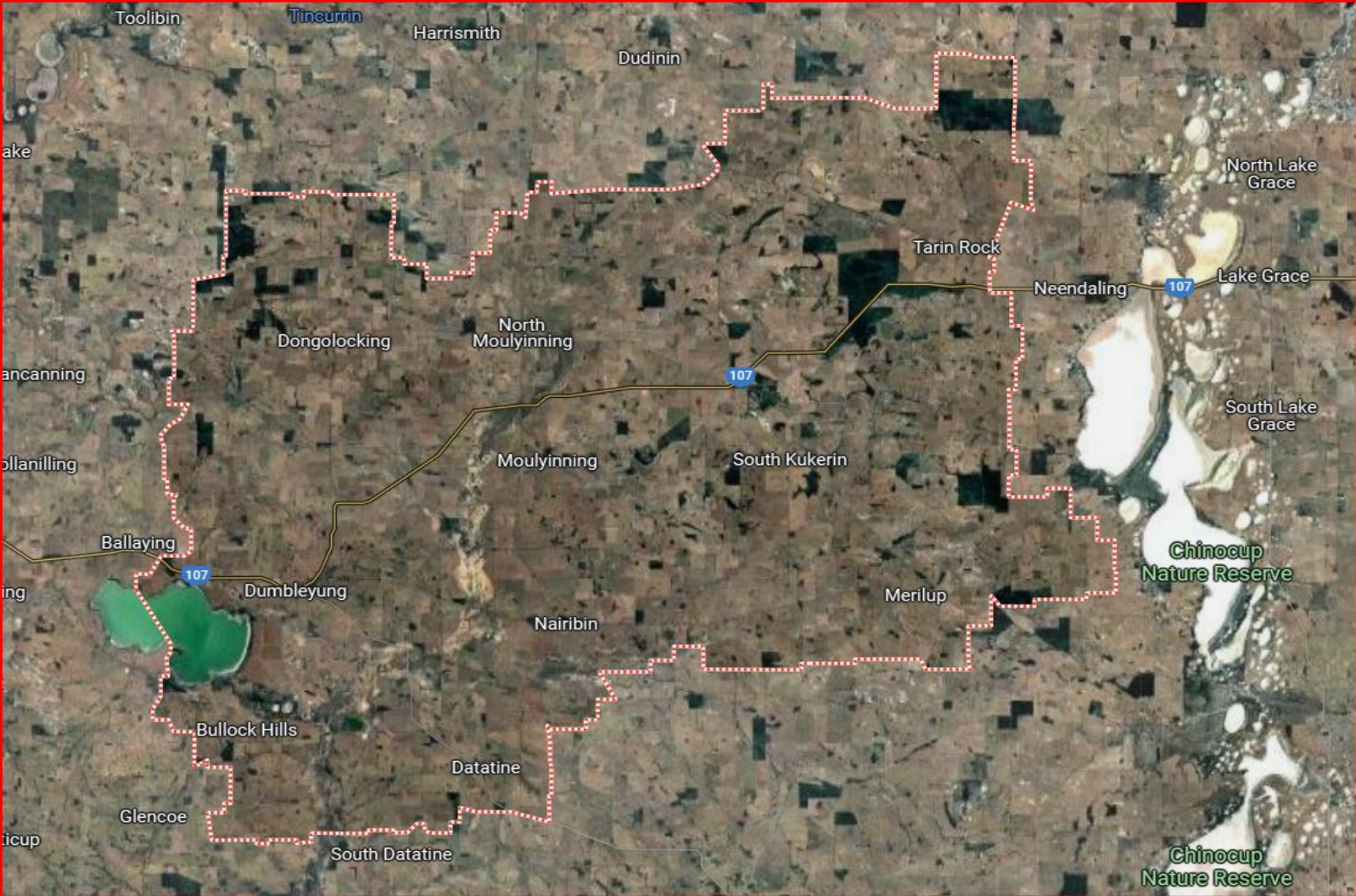
Please refer to the Department of Communities' Local Emergency Relief and Support Plan for the Wheatbelt Region – Narrogin District for full details. A summary of *evacuation* centres are identified below:

Name of centre	Capacity	Address	Contact	Comments
Shire of Dumbleyung				
Primary Dumbleyung Town Hall	260	32 Harvey Street Dumbleyung	Shire of Dumbleyung 9863 4012 CESM 0436 668 242	
Secondary Dumbleyung Stubbs Park Pavilion	150	70 Bahrs Road Dumbleyung	Scott Jefferis - Dumbleyung Agricultural Society 9863 4154 Shire of Dumbleyung 9863 4012 CESM 0436 668 242	
Primary Kukerin Town Hall	240	37 – 39 Scadden St, Kukerin	Shire of Dumbleyung 9863 4012 CESM 0436 668 242	
Secondary Kukerin Nenke Park Pavilion	150	89 Bennett St, Kukerin	John Davidson - Kukerin Agricultural Society - 0429 831 030 Shire of Dumbleyung 9863 4012 CESM 0436 668 242	
Shire of Kent				
Nyabing Sports Pavillion	TBA	19 Martin Road, Nyabing	Shire of Kent <u>9851 9780</u>	
Shire of Lake Grace				
Primary Lake Grace Sports Pavilion	300	Bishop Street Lake Grace	Shire of Lake Grace - 9890 2500 DCEO - 0400 631 052 CESM - 0436 668 242	

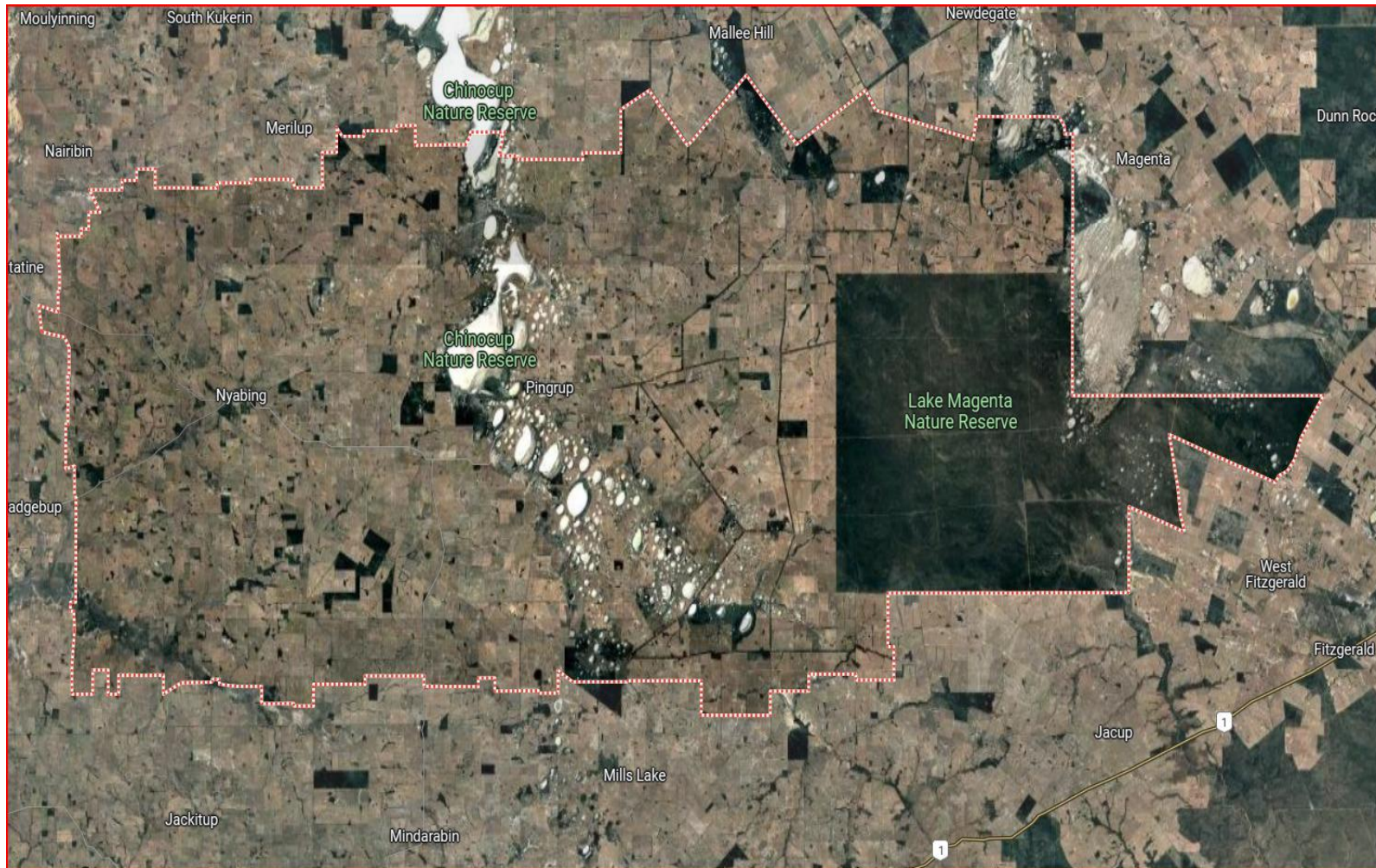
Secondary Lake Grace Town & Lesser Hall	350	Cnr McMahon and Bennett Streets Lake Grace	Shire of Lake Grace - 9890 2500 DCEO - 0400 631 052 CESM - 0436 668 242	
Newdegate Indoor Recreation Centre	300	Waddell Drive Newdegate	Shire of Lake Grace - 9890 2500 DCEO - 0400 631 052 CESM - 0436 668 242	
Lake King Hall	160	Newdegate - Lake King Road Lake King	Shire of Lake Grace - 9890 2500 Anna Scheeber - 0439 937 733	
Lake King Pavilion	120	Newdegate - Lake King Road Lake King	Shire of Lake Grace - 9890 2500 Anna Scheeber - 0439 937 733	
Varley Hall	160	Thomas Street Varley	Shire of Lake Grace - 9890 2500 DCEO - 0400 631 052 CESM - 0436 668 242	
Varley Sports Pavilion	80	Carstairs Road Varley	Shire of Lake Grace 9890 2500	

Appendix F: Map of the District

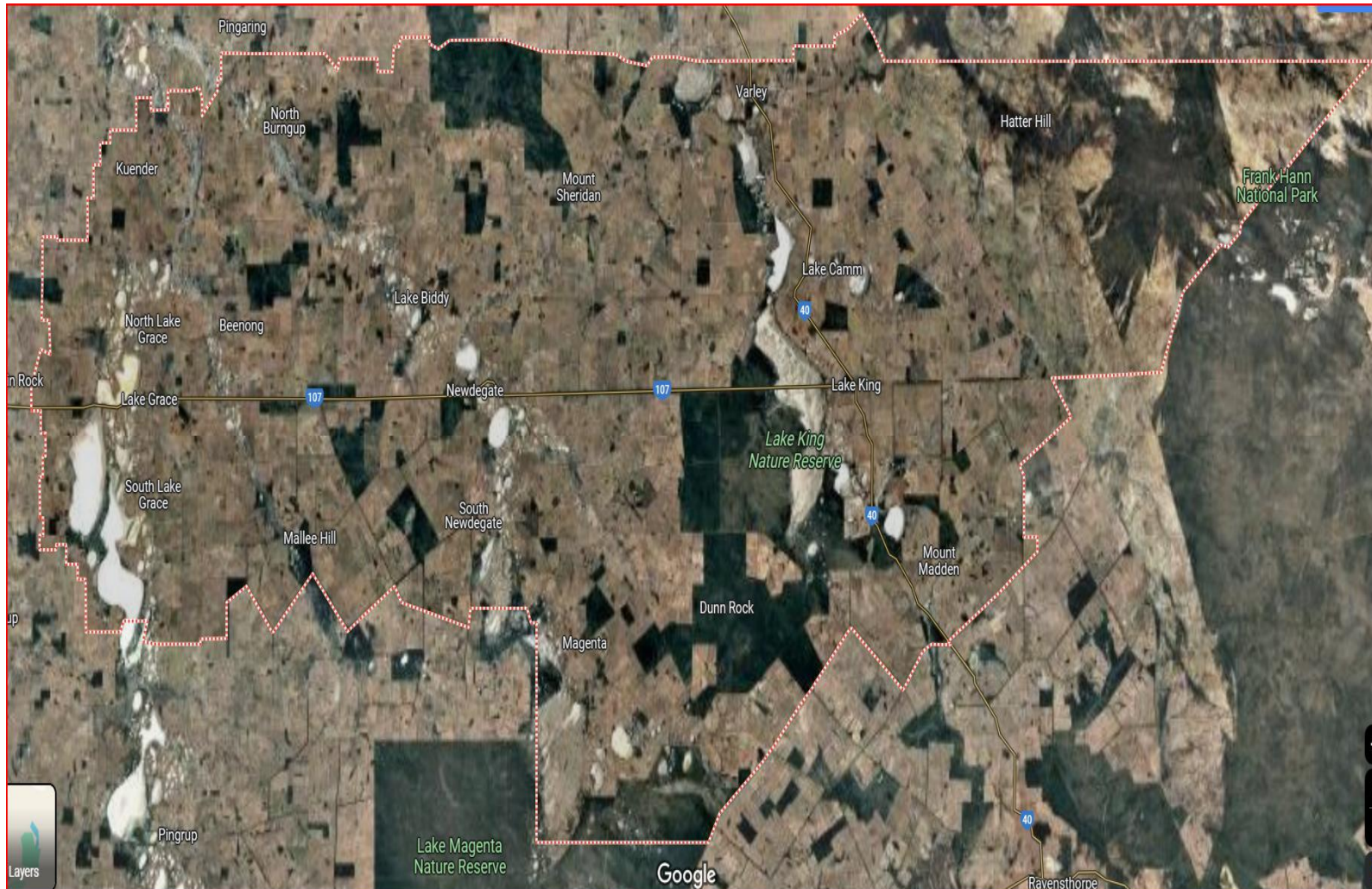
Shire of Dumbleyung



Shire of Kent



Shire of Lake Grace



Appendix G: Contacts

Appendix G Table: Contact list

Name	Organisation	Address	Phone	Mobile	Email	Fax
Winston Garrett	Lake Grace District High School Bus Contractor	N/A	N/A	0410 049 715	N/A	N/A
Brent Barrett-Lennard & Jillian Barrett-Lennard	Lake Grace District High School Bus Contractor	N/A	N/A	0429 366 042	N/A	N/A
Yvonne Harvey	Newdegate Primary School Bus Contractor	N/A	N/A	0427 711 554	N/A	N/A
Peter and Terrie Ness	Newdegate Primary School Bus Contractor	N/A	N/A	0427 997 940	N/A	N/A
Regional Transit	Lake King Primary School Bus Contractor	N/A	N/A	0428 276 031	N/A	N/A
Nicholls Bus and Coach Service Pty Ltd	Pingrup Primary School Bus Contractor	N/A	08 9881 1736	N/A	N/A	N/A
Plum Oak Pty Ltd	Pingrup Primary School Bus Contractor	N/A	N/A	0411 830 530	N/A	N/A
Swanhaven Pty Ltd	Nyabing Primary School Bus Contractor	N/A	N/A	0419 859 405	N/A	N/A
Nicholls Bus and Coach Service Pty Ltd	Nyabing Primary School Bus Contractor	N/A	08 9881 1736	N/A	N/A	N/A

Name	Organisation	Address	Phone	Mobile	Email	Fax
Candice LLOYD	Kukerin Primary School Bus Contractor	N/A	N/A	0473 060 447	N/A	N/A
Jemma COOK	Kukerin Primary School Bus Contractor	N/A	N/A	0427 646 071	N/A	N/A
Nicholls Bus and Coach Service Pty Ltd	Kukerin Primary School Bus Contractor	N/A	08 9881 1736	N/A	N/A	N/A
Tegan Hall	Dumbleyung Primary School Bus Contractor	N/A	N/A	0427 832 070	N/A	N/A
Tokanui Pty Ltd	Dumbleyung Primary School Bus Contractor	N/A	N/A	0427 634 003 / 0427 634 008	N/A	N/A