



SHIRE OF  
**Kent**  
NYABING • PINGRUP  
*worth the journey*

# Shire of Kent

## Public Health Plan

2026 – 2031

Working together for a  
healthy, safe and connected  
community.



Connected  
Communities



Healthy  
Lifestyles



Healthy & Safe  
Environments



Strong  
Planning



Reducing  
Inequities



Risk  
Management



# Contents

<b>1. Acknowledgement of Country</b>	<b>3</b>
<b>2. Executive summary</b>	<b>3</b>
<b>3. Message from the Shire President &amp; CEO</b>	<b>6</b>
<b>4. Section A: Background and health profile</b>	<b>7</b>
4.1. Introduction	7
4.2. Vision	8
4.3. Integrated planning and reporting: Plan alignment	9
4.4. Social and commercial determinants of health	10
4.5. Our community	13
4.6. Our health	15
4.7. Community engagement and support	18
4.8. Aboriginal health in our community	19
4.9. Equity and inclusion	20
<b>5. Section B: Strategic plan</b>	<b>21</b>
5.1 Priorities	21
5.2 Risks and Priorities	22
5.3 Action plan	23
<b>6. Section C: Monitoring and evaluation framework</b>	<b>31</b>
6.1 Evaluation and reporting	31
6.2 Reporting	31
<b>References</b>	<b>32</b>



# 1. Acknowledgement of Country

The Shire of Kent would like to acknowledge the Goreng people, the Traditional Custodians of the land on which we live and work and pay respect to their Elders, past, present and emerging. We also extend our respect to the Noongar Nation and acknowledge their continuous connection to the lands and waterways in the southwest of Western Australia.

## 2. Executive summary

The Shire of Kent Public Health Plan has been developed in accordance with the *Public Health Act 2016 (WA)* to guide actions that protect, improve and promote the health and wellbeing of the local community over the next five years.

This Plan recognises that health outcomes in rural communities are influenced by a wide range of factors beyond traditional health services, including access to infrastructure, housing, transport, community connection and the natural environment. With a small and dispersed population, the Shire of Kent faces unique challenges, but also benefits from strong community networks and high levels of volunteerism.

The Plan has been informed by:

- Local demographic and socioeconomic data (ABS Census 2021)
- Regional health information
- Community consultation and survey feedback
- Existing Council plans and strategies

Community feedback highlighted several key public health priorities, including:

- Mental health and wellbeing
- Harmful alcohol consumption
- Access to health and support services
- Physical activity and recreation opportunities
- Access to affordable and healthy food
- Community safety and social connection

In response, this Plan focuses on six key objectives aligned with the WA State Public Health Plan, including:

1. Supporting healthy and connected communities
2. Preventing illness and promoting healthy lifestyles
3. Maintaining safe and healthy environments
4. Strengthening public health planning and governance
5. Reducing inequities and improving access
6. Preparing for and responding to public health risks

The Shire of Kent acknowledges that it is not a direct provider of many health services; however, it plays a critical role as:

- **Advocate** – representing the needs of the community to State and Federal Government
- **Provider** – delivering infrastructure, programs and services that support health
- **Partner** – working collaboratively with agencies and community organisations
- **Regulator** – ensuring environmental health and safety standards

Key strategies within the Plan include:

- Supporting community events and initiatives that strengthen social connection and mental wellbeing
- Improving access to recreation infrastructure and opportunities for physical activity
- Advocating for improved access to health services and essential infrastructure, including housing and transport
- Promoting healthy lifestyle choices through education and partnerships
- Maintaining environmental health standards and safe public spaces
- Strengthening emergency preparedness and resilience

The Plan has been designed to be practical, achievable and scalable, recognising the limited resources available within a small rural local government. Actions will be delivered through a combination of existing operational activities, partnerships and targeted advocacy.

Progress will be monitored through measurable actions and reported annually to Council, with a focus on:

- Delivery of initiatives (short-term)
- Changes in behaviours and participation (medium-term)
- Improvements in health outcomes (long-term)

Ultimately, this Plan aims to ensure that the Shire of Kent remains a healthy, resilient and connected community where distance is no barrier to wellbeing.



### 3. Message from the Shire President & CEO

As elected members and administration of the Shire of Kent, we are proud to present this Public Health Plan, which reflects our commitment to supporting the health and wellbeing of our community.

Living in a small rural community comes with both challenges and opportunities. While our residents benefit from strong community connections and a great lifestyle, we also recognise the barriers that distance, access to services and limited infrastructure can present.

This Plan has been shaped by the voices of our community. We would like to thank everyone who contributed their time and feedback, helping us better understand the issues that matter most — from mental health and wellbeing, to access to services, recreation opportunities and community safety.

The Shire of Kent is committed to playing its role in improving public health outcomes. While we are not a direct provider of health services, we have an important role in creating environments that support healthy living, advocating for our community and working in partnership with others to deliver meaningful outcomes.

This Plan provides a clear and practical roadmap for action. It builds on the work we are already doing and ensures that public health is considered in our planning, decision-making and service delivery.

Importantly, this Plan also aligns with the WA State Public Health Plan and positions the Shire to respond to current and emerging challenges, including those associated with rural access, workforce, housing and emergency management.

We are committed to implementing this Plan and to continually reviewing and adapting our approach to ensure we are meeting the needs of our community now and into the future.

Together, we can continue to build a healthy, connected and resilient Shire of Kent.



Kate Johnston  
**Shire President**

*May 2026*



Christie Smith  
**Chief Executive Officer**

*May 2026*

## 4. Section A: Background and health profile

### 4.1. Introduction

The Shire of Kent Public Health Plan (PHP) has been developed in accordance with the requirements of the *Public Health Act 2016 (WA)*. The purpose of this Plan is to protect, improve and promote the health and wellbeing of the Shire of Kent community by identifying local public health priorities and outlining coordinated actions to address them.

This Plan provides a structured framework to:

- Identify key public health risks and opportunities within the Shire
- Guide decision-making, service delivery and advocacy
- Support partnerships across government and community sectors
- Improve health outcomes and reduce inequities over time

Public health relates to protecting and improving the health and wellbeing of people and their communities. It encompasses a wide range of activities and disciplines including:

- Health promotion – encouraging healthy behaviours and supporting healthier environments
- Disease prevention – including immunisation, screening and infection control
- Environmental health – safe food, clean water, waste management and pollution control
- Policy and advocacy – supporting legislation and planning that promotes health
- Emergency preparedness and response – including bushfires, pandemics and extreme weather
- Health equity – addressing factors such as housing, education and access to services
- Community engagement – working with local organisations to support wellbeing

The Shire of Kent recognises that public health is influenced by a broad range of environmental, social and economic factors. In a rural and remote context, challenges such as distance, access to services, workforce availability and infrastructure constraints play a significant role in shaping health outcomes.

This Plan aligns with:

- WA State Public Health Plan
- Sustainable Health Review (WA)
- *Local Government Act 1995 (WA)*
- Shire of Kent Strategic Community Plan (2023–2033)
- Corporate Business Plan and Asset Management Plans

## 4.2. Vision

A healthy, connected and resilient community where all residents of the Shire of Kent have equitable access to safe environments, essential services and opportunities that support lifelong wellbeing.



### 4.3. Integrated planning and reporting: Plan alignment

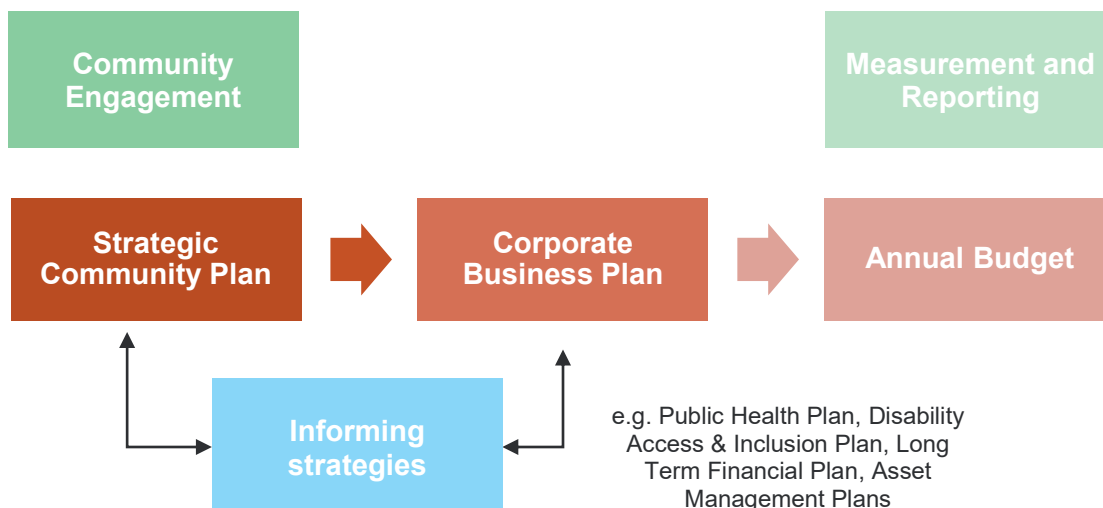
The Public Health Plan forms part of the Shire of Kent’s Integrated Planning and Reporting Framework. It aligns with and supports delivery of the:

- Strategic Community Plan (2023–2033)
- Corporate Business Plan
- Asset Management Plans
- Long Term Financial Plan

Public health considerations are embedded across multiple functional areas including:

- Infrastructure planning (roads, footpaths, recreation facilities)
- Environmental health services
- Community development
- Emergency management

This integrated approach ensures that public health is not treated in isolation but is incorporated into broader planning, service delivery and investment decisions.



## 4.4. Social and commercial determinants of health

Public health is about ensuring communities have fair access to the resources that support good health. These resources are referred to as the social determinants of health – like education, employment, housing, and healthcare. They are resources shaped by broader social and commercial factors. Local governments play a key role in addressing these factors.

### Good health starts with the basics

To build healthier, happier communities, we need to understand what helps people live well and why some are missing out.

Let's look at the bigger picture.



Nutritious food



Financial resources



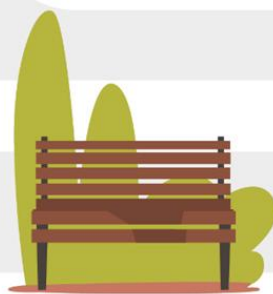
Quality education



Family & community connections



Meaningful employment



Green & blue spaces



Reliable transport

Health outcomes in the Shire of Kent are strongly influenced by social, environmental and economic conditions.

Key determinants include:

- Geographic isolation and transport access
- Availability of health and support services
- Housing availability and quality
- Employment and income levels
- Access to affordable and healthy food
- Social connection and community participation
- Digital connectivity and access to technology

### **Rural-Specific Determinants**

In the Shire of Kent, several unique rural challenges influence health outcomes:

#### **Fuel Access and Transport**

Reliable access to fuel is critical in a rural community where residents must travel significant distances (often 60km+) to access essential services such as healthcare, groceries and education. Disruptions to fuel supply can directly impact:

- Access to medical appointments
- Workforce participation
- Emergency response capability
- Community wellbeing

#### **Digital Connectivity and Telehealth**

Access to reliable digital connectivity is increasingly essential for health outcomes, particularly through telehealth services. In rural areas, limited internet coverage and reliability can restrict:

- Access to medical consultations
- Mental health support services
- Health information and resources



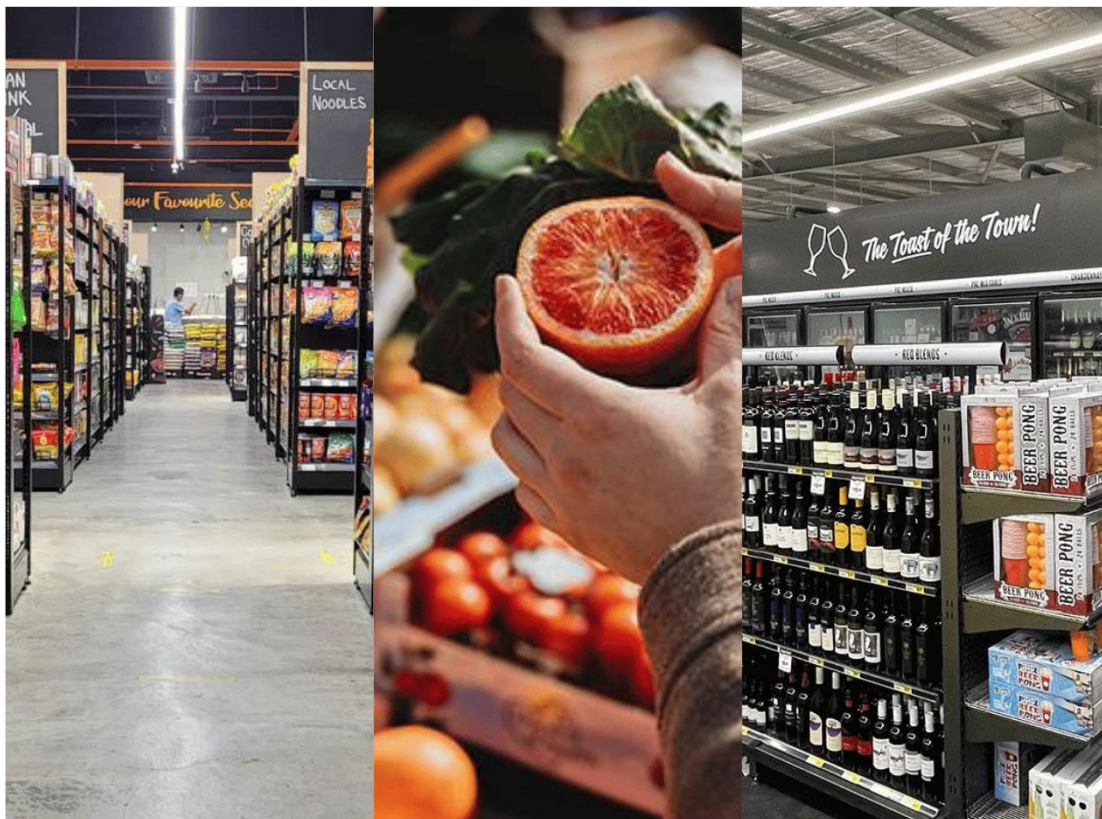
## Commercial Determinants

The availability and promotion of alcohol, tobacco and unhealthy food products also influence health outcomes. Community feedback identified alcohol consumption and diet as key concerns.

This Plan recognises the importance of addressing these broader determinants rather than focusing solely on individual behaviours.



Figure 2. Determinants of health.



## 4.5. Our community

The Shire of Kent is a small rural local government area located in the Great Southern region of Western Australia, covering approximately 5,625 square kilometres. The Shire includes the townsites of Nyabing and Pingrup, as well as surrounding rural areas.

### Community Snapshot (ABS 2021)

Indicator	Shire of Kent	Western Australia
Population	491	2.66million
Population density	0.087/km <sup>2</sup>	1.05/km <sup>2</sup>
Median age	39	38
Aboriginal and or Torres Strait Islander population	0.6%	3.3%
Average household size	2.6	2.5
SEIFA Score*	1,072	1,011

\* A lower SEIFA score indicates a higher level of disadvantage

### Key Characteristics

- Highly dispersed rural population
- Strong reliance on agriculture
- Very high levels of volunteering (75%)
- High levels of workforce participation
- Strong sense of community connection

### Transport & Access

- 0% of households without a vehicle
- No public transport services
- 11% walk or ride to work



## Housing

- Low levels of social housing (4%)
- Limited housing availability impacting workforce attraction

## Population Trends

The Shire of Kent has a small and relatively stable population of approximately 491 residents (ABS 2021). Like many rural areas in Western Australia, the Shire has experienced:

- Long-term population decline and stabilisation trends
- An ageing population profile
- Ongoing challenges in attracting and retaining workforce

These trends are consistent with broader regional patterns across rural Western Australia, where population growth is concentrated in metropolitan and larger regional centres.



## 4.6. Our health

Local health priorities have been informed by community consultation and regional health data.

Survey results indicate that the most significant health concerns in the Shire include:

- Harmful alcohol use
- Poor mental health
- Poor nutrition and sugary drink consumption
- Smoking and vaping
- Physical inactivity

These findings are supported by community perceptions. Information collected from a community survey undertaken:

- Harmful alcohol use and poor mental health ranked highest
- Access to health services (50%) and safety (65%) are top priorities

Additional rural health challenges include:

- Limited access to primary health care
- Travel requirements for specialist services
- Workforce shortages
- Emergency response constraints

The following snapshot of the Health and Wellbeing Profile has been prepared by WA Country Health Service Health Promotion (2026) and is an adaptation of a similar resource developed by South Metropolitan Health Service. Information and data is sourced from the Public Health Atlas produced by the Epidemiology Directorate, Public and Aboriginal Health Division, Department of Health WA. January 2026.

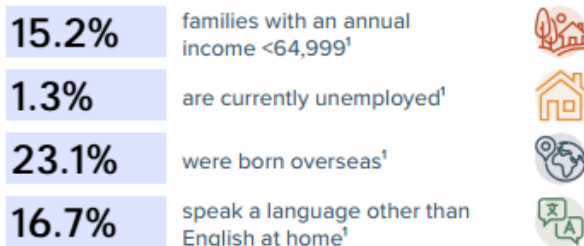
Data presented in the Health and Wellbeing Profiles 2015-2024 are estimates derived from Bayesian modelling processes not raw values. Refer to Bayesian modelling method documents for technical information.



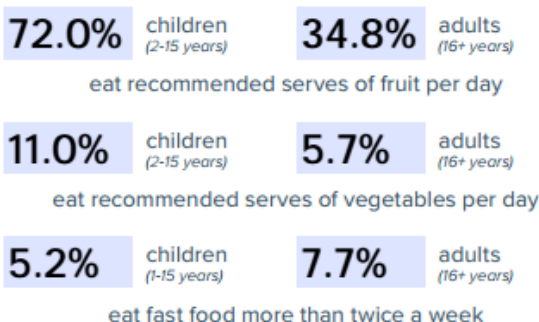
# A snapshot of the Health and Wellbeing Profile 2015–2024

## Shire of Kent

### Population



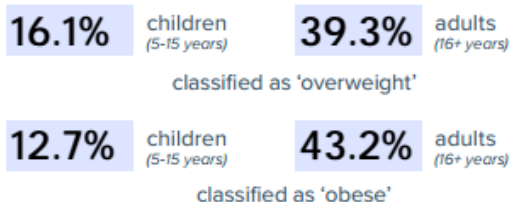
### Nutrition



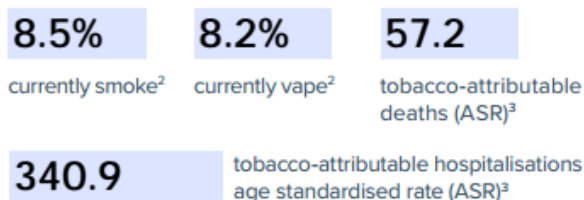
### Physical activity



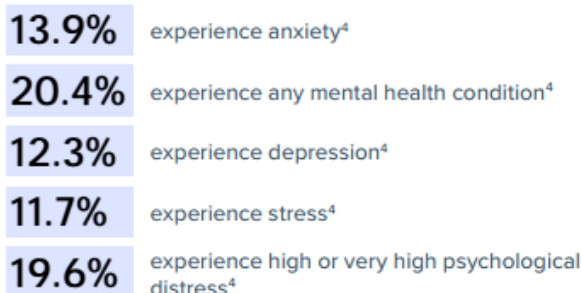
### Overweight and obesity



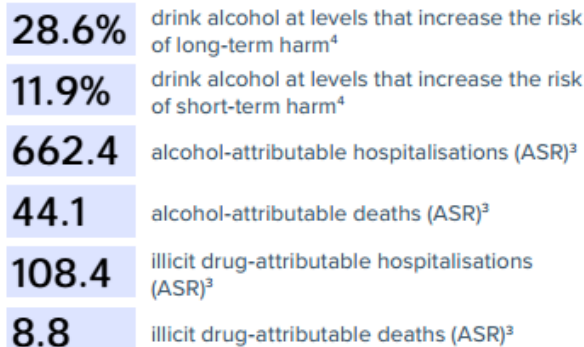
### Tobacco use



### Mental health and wellbeing



### Alcohol and illicit drugs





### Injury-related hospitalisations (ASR)

17.0

accidental drowning, submersion, threats to breathing hospitalisations<sup>3</sup>

412.3

accidental falls hospitalisations<sup>3</sup>

43.4

accidental poisoning hospitalisations<sup>3</sup>

34.6

assault and neglect hospitalisations<sup>3</sup>

66.5

intentional self-harm hospitalisations<sup>3</sup>

333.9

transport accident hospitalisations<sup>3</sup>



### Injury-related deaths (ASR)

1.9

accidental drowning, submersion, threats to breathing deaths<sup>3</sup>

13.4

accidental falls deaths<sup>3</sup>

6.9

accidental poisoning deaths<sup>3</sup>

0.9

assault and neglect deaths<sup>3</sup>

15.8

intentional self harm deaths<sup>3</sup>

44.4

transport accident deaths<sup>3</sup>



### Injury-related harm

30.1%

children (0-15 years)

38.0%

adults (16+ years)



### Heatwave related conditions (ASR)

7.37

heatwave related hospitalisations<sup>3</sup>

9.02

heatwave related Emergency Department presentations<sup>3</sup>



### Notifiable infectious diseases (ASR)

45.6

blood-borne diseases<sup>3</sup>

138.2

enteric diseases<sup>3</sup>

147.8

sexually transmitted infections<sup>3</sup>

177.0

vaccine-preventable diseases<sup>3</sup>

33.8

vector-borne diseases<sup>3</sup>

- NOTES: 1. Source: 2024 Estimated Resident Population, Australian Bureau of Statistics  
 2. Persons aged 18 years and above  
 3. Persons of all ages  
 4. Persons aged 16 years and over

Hospitalisations and deaths are expressed as Age-standardised rates (ASR) per 100,000 population. Other data expressed as estimated prevalence (%) excluding population data.



## 4.7. Community engagement and support

This Plan has been informed through a combination of community engagement, stakeholder consultation and data analysis.

### Community Engagement

Engagement activities included:

- Community survey (29 respondents across Pingrup, Nyabing and surrounding rural areas)
- Informal community discussions
- Council-led engagement initiatives

The Shire also regularly engages with the community through initiatives such as the “Council Coffee Break – Let’s Talk” sessions, which provide an informal and accessible opportunity for residents to raise issues, share feedback and discuss local priorities directly with Council.

Key themes identified through engagement include:

- Mental health and wellbeing
- Access to health services
- Community safety
- Recreation opportunities and infrastructure
- Social connection and community participation

Survey results highlighted that:

- Harmful alcohol use and poor mental health are key concerns
- Access to services and feeling safe are top priorities
- Community members want more opportunities for physical activity and social engagement



## Stakeholder Consultation

The development of this Plan has also been informed by engagement with key stakeholders, including:

- WA Country Health Service (WACHS)
- Department of Fire and Emergency Services (DFES)
- WA Local Government Association (WALGA)
- Great Southern Development Commission (GSDC)
- Local community groups and sporting organisations

These partnerships are critical in supporting coordinated and effective public health outcomes in a rural context.

## 4.8. Aboriginal health in our community

The Shire of Kent has a small Aboriginal population (0.6% as per ABS 2021). While the population is small, the Shire acknowledges the importance of culturally appropriate engagement and inclusive service delivery.

The Shire is committed to:

- Supporting culturally respectful practices
- Ensuring access to services for all residents
- Partnering with regional Aboriginal organisations where appropriate

The Shire recognises the strength, resilience and cultural contribution of Aboriginal people and will continue to support inclusive and respectful community outcomes.



## 4.9. Equity and inclusion

The Shire of Kent recognises that not all residents experience the same level of access to services and opportunities.

Groups requiring additional consideration include:

- Older residents
- People living with disability
- Carers
- People experiencing isolation
- Low-income households
- People living in remote rural areas

Key equity challenges include:

- Access to transport
- Access to health and support services
- Availability of housing
- Digital connectivity

The Shire is committed to improving inclusion through:

- Accessible infrastructure
- Community programs
- Improved communication and information sharing
- Advocacy to other levels of government, both State and Federal



## 5. Section B: Strategic plan

### 5.1 Priorities

The Shire of Kent Public Health Plan aligns with the objectives of the WA State Public Health Plan, while reflecting local community needs identified through consultation and data analysis.

#### State Objective Alignment

State Objective	Shire of Kent Focus
1. Empower people and communities	Strengthen community connection, participation and resilience
2. Prevent illness, injury and disability	Promote physical activity, healthy eating and mental wellbeing
3. Improve environmental health	Maintain safe water, waste, food and built environments
4. Strengthen public health planning	Embed public health into local decision-making
5. Reduce inequities	Improve access for rural and vulnerable populations
6. Prepare for public health risks	Strengthen emergency preparedness and response

From community consultation and health data, the following priorities have been identified:

1. Mental health and wellbeing
2. Reducing harmful alcohol consumption
3. Increasing physical activity
4. Improving access to healthy and affordable food
5. Improving access to health and support services
6. Strengthening community safety and connection
7. Addressing rural access challenges (transport, housing, workforce)

## 5.2 Risks and Priorities

In accordance with the *Public Health Act 2016 (WA)*, the Shire has identified key public health risks.

### Public Health Risk Summary

Risk Category	Key Risk	Local Context
Health behaviours	Alcohol misuse	Identified as top concern in community survey
Health behaviours	Physical inactivity	Limited infrastructure and programs
Health behaviours	Poor nutrition	Limited access to affordable healthy food
Mental health	Isolation and wellbeing	Small population, distance, ageing population
Access	Health service availability	No local services, travel required
Access	Transport limitations	No public transport, reliance on private vehicles
Environment	Extreme weather events	Heat, bushfire risk
Infrastructure	Housing shortages	Impacts workforce and service delivery
Emergency	Disaster preparedness	Bushfire and climate risks

### Priority Areas

- Mental health and social connection
- Healthy lifestyles (physical activity, nutrition)
- Alcohol and substance harm minimisation
- Access to services (health, transport, housing)
- Safe and supportive environments
- Emergency preparedness

## 5.3 Action plan

### OBJECTIVE 1: HEALTH AND CONNECTED COMMUNITIES

Priority 1.1 Improve mental health and social connection		
Action	Role	Measure
Support and promote community events and programs	Deliver	Number of events delivered annually
Facilitate community connection initiatives (e.g. Coffee Break sessions)	Deliver	Participation rates
Advocate for improved access to mental health services	Advocate	Engagement with WACHS/State agencies

Priority 1.2 Increase participation in community life		
Action	Role	Measure
Support local sporting and community groups	Partner	Number of supported groups
Improve accessibility of community spaces	Deliver	Infrastructure upgrades completed
Promote volunteering opportunities	Educate	Volunteer participation levels

### OBJECTIVE 2: PREVENT ILLNESS AND PROMOTE HEALTHY LIFESTYLES

Priority 2.1 Increase physical activity		
Action	Role	Measure
Develop and maintain walking/cycling infrastructure	Deliver	Km of paths improved
Provide recreation facilities and programs	Deliver	Usage rates
Promote active lifestyle initiatives	Educate	Program participation

Priority 2.2 Improve nutrition and healthy eating		
Action	Role	Measure
Support access to affordable healthy food	Advocate	Partnerships formed
Deliver or support healthy eating education programs	Partner	Program delivery
Promote local food initiatives	Educate	Community engagement

Priority 2.3 Reduce harmful alcohol and substance use		
Action	Role	Measure
Support community awareness campaigns	Educate	Campaign reach
Partner with health services to support programs	Partner	Number of initiatives

### OBJECTIVE 3: HEALTHY AND SAFE ENVIRONMENTS

Priority 3.1 Maintain environmental health standards		
Action	Role	Measure
Deliver environmental health services (food safety, waste, water)	Compliance	Inspections completed
Manage waste and pollution	Deliver	Compliance rates

Priority 3.2 Improve community safety		
Action	Role	Measure
Implement traffic calming and road safety initiatives	Deliver	Reduction in incidents/speeds
Improve lighting and public space safety	Deliver	Infrastructure improvements
Support community safety programs	Partner	Program delivery

### OBJECTIVE 4: STRENGTHEN PUBLIC HEALTH PLANNING

Priority 4.1 Embed public health into decision making		
Action	Role	Measure
Integrate public health into Council planning	Policy	Inclusion in key documents
Monitor and review Public Health Plan	Deliver	Annual reporting completed

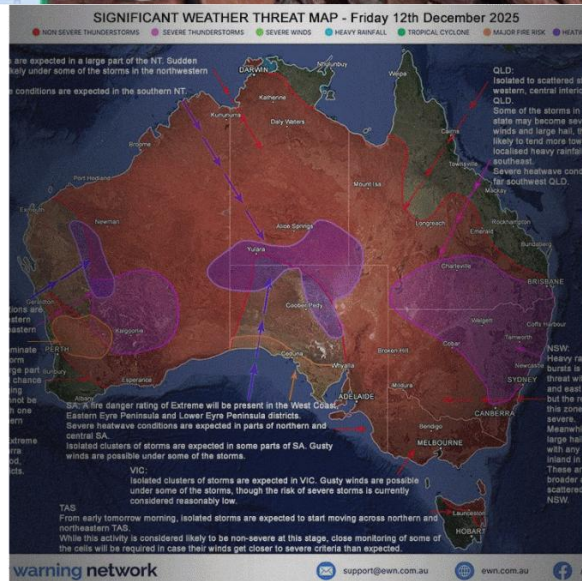


## OBJECTIVE 5: REDUCE INEQUITIES

Priority 5.1 Improve access to services		
Action	Role	Measure
Advocate for improved health services access	Advocate	Engagement outcomes
Address housing shortages (staff/community)	Advocate	Housing projects delivered

## OBJECTIVE 6: PUBLIC HEALTH RISK MANAGEMENT

Priority 6.1 Emergency preparedness		
Action	Role	Measure
Maintain Local Emergency Management Arrangements	Compliance	Plan currency
Support community emergency preparedness	Educate	Participation levels
Collaborate with DFES and agencies	Partner	Joint activities



## OBJECTIVE 1: HEALTH AND CONNECTED COMMUNITIES

Action number	Priority	Action	Expected outcome(s)	Measure	Alignment to State PHP objectives and priorities
1.1	<b>Improve mental health and social connection.</b>	<p>Create environments that promote mental wellbeing, inclusion and social connection.</p> <p>Deliver and/or support community events, programs and initiatives that reduce social isolation and encourage participation.</p> <p>Maintain and enhance community spaces that support social interaction and inclusion.</p> <p>Support initiatives that improve digital inclusion and online social connection opportunities.</p> <p>Strengthen partnerships with organisations such as Act Belong Commit and WA Country Health Service (WACHS).</p> <p>Advocate for improved access to mental health services in rural communities.</p>	A resilient, socially connected and inclusive community with improved wellbeing and reduced social isolation.	<p>Number of community events and programs delivered annually.</p> <p>Participation rates in community programs and events.</p> <p>Number of partnerships and collaborative initiatives established.</p> <p>Engagement with WACHS, Act Belong Commit and other agencies.</p>	<p><b>Promote:</b> Optimise mental health and wellbeing.</p> <p><b>Promote:</b> Build stronger and more connected communities.</p>
1.2	<b>Increase participation in community life</b>	<p>Partner with and support local sporting, recreation and community groups.</p> <p>Improve accessibility, inclusiveness and usability of community facilities and public spaces.</p> <p>Promote volunteering and community participation opportunities.</p> <p>Support affordable and accessible recreation, fitness and wellness activities for all age groups.</p> <p>Encourage intergenerational participation and community inclusion initiatives.</p>	Increased participation in community life, volunteering, recreation and social activities across all age groups and abilities.	<p>Number of supported community and sporting groups.</p> <p>Completion of accessibility and infrastructure upgrades.</p> <p>Volunteer participation levels.</p> <p>Participation rates in recreation and wellness activities.</p>	<p><b>Promote:</b> Improve health literacy by ensuring accessible and appropriate health information is effectively communicated to all Western Australians.</p> <p><b>Promote:</b> Increase opportunities for physical activity and community participation.</p>

## OBJECTIVE 2: PREVENT ILLNESS AND PROMOTE HEALTHY LIFESTYLES

Action number	Priority	Action	Expected outcome(s)	Measure	Alignment to State PHP objectives and priorities
2.1	<b>Increase physical activity</b>	<p>Develop, maintain and improve walking, cycling and recreation infrastructure.</p> <p>Support increased community access to shared sporting and recreation facilities, including partnerships with local schools and community groups.</p> <p>Maintain safe, accessible and inclusive recreation facilities and public open spaces.</p> <p>Promote environments and initiatives that encourage active lifestyles and physical activity for all age groups and abilities.</p> <p>Encourage activation and use of parks, trails and public spaces.</p>	<p>Increased levels of physical activity and participation in recreation across the community.</p> <p>Safe, accessible and well-maintained recreation infrastructure and public spaces. Improved community awareness of the benefits of active lifestyles.</p>	<p>Kilometres of paths and trails developed or maintained.</p> <p>Usage rates of recreation facilities and public open spaces.</p> <p>Participation rates in recreation and wellness programs.</p> <p>Number of partnerships supporting shared facility use.</p>	<p><b>Promote:</b> Ensure public health risks are considered and addressed in planning and development policies and approval processes to facilitate healthy living and minimise impacts from public health hazards.</p> <p><b>Prevent:</b> Encourage and support active living and physical activity.</p>
2.2	<b>Improve nutrition and healthy eating</b>	<p>Promote healthy eating and healthier food choices at Shire-managed and community events.</p> <p>Support State and Federal nutrition campaigns in partnership with local community groups, sporting clubs and schools.</p> <p>Support initiatives that improve community food security and access to affordable healthy food.</p> <p>Promote education and awareness initiatives that increase knowledge and skills to support healthy eating and meal preparation.</p> <p>Encourage availability of healthy and affordable food and drink options within community spaces and facilities.</p>	<p>Increased community awareness and knowledge of healthy eating and nutrition. Improved access to affordable and healthy food options.</p> <p>Increased community participation in healthy eating initiatives and programs.</p>	<p>Number of partnerships and collaborative initiatives established.</p> <p>Delivery of nutrition and healthy eating programs.</p> <p>Community participation and engagement levels.</p> <p>Inclusion of healthy food options at community events and facilities.</p>	<p><b>Prevent:</b> Encourage and support healthy eating and active living to halt the rise in obesity.</p>
2.3	<b>Reduce harmful alcohol and substance use</b>	<p>Support and promote community awareness campaigns relating to alcohol, tobacco, vaping and other drug harms.</p> <p>Partner with health agencies and service providers to support harm minimisation initiatives and education programs.</p> <p>Promote and maintain smoke-free and vape-free environments within local government managed facilities, reserves and public spaces where appropriate.</p> <p>Work collaboratively with community groups, licensed premises and relevant agencies to reduce antisocial behaviour and alcohol-related harm.</p> <p>Support initiatives that encourage healthy lifestyle choices and reduce risky behaviours.</p>	<p>Increased community awareness and understanding of the harms associated with alcohol, tobacco, vaping and other drug use.</p> <p>Reduced harm and adverse impacts associated with alcohol and substance misuse. Safer and healthier public environments.</p>	<p>Reach and engagement of community awareness campaigns.</p> <p>Number of partnerships and collaborative initiatives.</p> <p>Number of smoke-free/vape-free environments supported.</p> <p>Participation in harm minimisation initiatives</p>	<p><b>Prevent:</b> Reduce use of tobacco, vapes and related products.</p> <p><b>Prevent:</b> Reduce harm due to alcohol use.</p> <p><b>Prevent:</b> Reduce the harm due to illicit drug use, misuse of pharmaceuticals and other drugs of concern.</p>

## OBJECTIVE 3: HEALTHY AND SAFE ENVIRONMENTS

Action number	Priority	Action	Expected outcome(s)	Measure	Alignment to State PHP objectives and priorities
3.1	<b>Maintain environmental health standards</b>	<p>Deliver environmental health services including food safety, public health compliance, waste management and water quality monitoring.</p> <p>Manage waste, pollution and potential environmental health hazards in accordance with legislative requirements.</p> <p>Support safe and healthy built and natural environments through environmental health monitoring and compliance activities.</p> <p>Promote community awareness of environmental health responsibilities and public health risks where appropriate.</p> <p>Support mosquito, pest and vermin control activities where required.</p> <p>Consider environmental sustainability and climate resilience in infrastructure and environmental health planning.</p>	<p>Reduced environmental risks to public health. Environmental health services that meet legislative requirements and community needs. Safe and healthy public environments.</p>	<p>Number of inspections completed annually.</p> <p>Compliance rates.</p> <p>Number of environmental health investigations and responses.</p> <p>Waste management service levels and community satisfaction.</p>	<p><b>Protect:</b> Minimise public health risks associated with environmental health hazards.</p> <p><b>Protect:</b> Ensure safe food, water and waste management practices.</p> <p><b>Promote:</b> Ensure public health risks are considered and addressed in planning and development processes.</p>
3.2	<b>Improve community safety</b>	<p>Implement and advocate for traffic calming, road safety and pedestrian safety initiatives.</p> <p>Improve lighting, accessibility and safety within public spaces and community infrastructure.</p> <p>Support community safety and crime prevention initiatives in partnership with relevant agencies and community groups.</p> <p>Maintain safe, inclusive and accessible public open spaces and recreational areas.</p> <p>Promote road safety awareness and responsible road user behaviour.</p> <p>Continue to collect and utilise traffic and speed data to inform road safety improvements and advocacy.</p>	<p>Improved road and pedestrian safety outcomes. Increased perceptions of safety within the community.</p> <p>Safe, accessible and inclusive public spaces and infrastructure.</p>	<p>Reduction in reported incidents and speeding behaviour.</p> <p>Completion of infrastructure and safety improvements.</p> <p>Delivery of community safety initiatives and programs.</p> <p>Community feedback relating to perceptions of safety.</p>	<p><b>Protect:</b> Reduce preventable injuries and harm.</p> <p><b>Protect:</b> Create safe and healthy environments that support wellbeing.</p> <p><b>Promote:</b> Support planning and infrastructure that enables healthy, safe and connected communities.</p>

## OBJECTIVE 4: STRENGTHEN PUBLIC HEALTH PLANNING

Action number	Priority	Action	Expected outcome(s)	Measure	Alignment to State PHP objectives and priorities
4.1	<b>Embed public health into decision making</b>	<p>Integrate public health considerations into Council planning, policies, strategies and decision-making processes.</p> <p>Ensure public health principles are considered across infrastructure, community development, environmental health and emergency management planning.</p> <p>Monitor, review and report on the implementation of the Public Health Plan.</p> <p>Utilise community feedback, local data and evidence to inform public health priorities and actions.</p> <p>Strengthen internal awareness and understanding of public health responsibilities across the organisation.</p>	<p>Public health principles are embedded within Council planning and decision-making processes.</p> <p>Improved organisational awareness of public health responsibilities and risks.</p> <p>Ongoing compliance with the requirements of the Public Health Act 2016 (WA).</p>	<p>Inclusion of public health considerations within key Council plans and strategies.</p> <p>Completion of annual Public Health Plan reporting and review.</p> <p>Number of relevant plans and policies incorporating public health considerations.</p> <p>Ongoing review and monitoring activities completed.</p>	<p><b>Enable:</b> Embed public health planning across local government functions and decision-making.</p> <p><b>Enable:</b> Improve the use of evidence, data and collaboration to inform public health action.</p> <p><b>Protect:</b> Ensure public health risks are identified, monitored and managed appropriately.</p>

## OBJECTIVE 5: REDUCE INEQUITIES

Action number	Priority	Action	Expected outcome(s)	Measure	Alignment to State PHP objectives and priorities
5.1	<b>Improve access to services</b>	<p>Advocate for improved access to health, allied health and support services for rural communities.</p> <p>Advocate for and support initiatives that improve access to housing for staff, essential workers and community members.</p> <p>Support equitable access to community facilities, events and information for all residents, including older people, people living with disability and those experiencing social isolation.</p> <p>Work collaboratively with government agencies and service providers to identify and address barriers to accessing essential services.</p> <p>Promote inclusive and accessible community environments.</p>	<p>Improved access to essential health and support services.</p> <p>Increased availability and accessibility of housing to support community wellbeing and workforce sustainability.</p> <p>Improved inclusion, accessibility and participation across the community.</p> <p>Reduced barriers to accessing services, information and community opportunities.</p>	<p>Engagement and advocacy outcomes with government agencies and service providers.</p> <p>Number of housing initiatives or projects supported/delivered.</p> <p>Participation and accessibility outcomes for community programs and events.</p> <p>Number of partnerships and collaborative initiatives established.</p>	<p><b>Reduce:</b> Improve equitable access to services, infrastructure and opportunities that support health and wellbeing.</p> <p><b>Promote:</b> Create inclusive, accessible and connected communities.</p> <p><b>Enable:</b> Support collaboration and partnerships to improve public health outcomes.</p>

## OBJECTIVE 6: PUBLIC HEALTH RISK MANAGEMENT

Action number	Priority	Action	Expected outcome(s)	Measure	Alignment to State PHP objectives and priorities
6.1	<b>Emergency preparedness</b>	<p>Maintain and review Local Emergency Management Arrangements (LEMA) and associated emergency response plans.</p> <p>Support community awareness, preparedness and resilience initiatives relating to emergencies and public health risks.</p> <p>Collaborate with the Department of Fire and Emergency Services (DFES), WA Country Health Service (WACHS), emergency services and other relevant agencies to support coordinated emergency management responses.</p> <p>Promote community preparedness for bushfires, extreme weather events, heatwaves, pandemics and other emergencies.</p> <p>Support recovery and resilience activities following emergency events where appropriate.</p> <p>Support public communication during emergency events through accessible and timely information sharing.</p> <p>Advocate for sustainable volunteer emergency service capability in rural communities.</p>	<p>Improved community preparedness, resilience and awareness of public health risks and emergencies.</p> <p>Effective and coordinated emergency management arrangements and partnerships.</p> <p>Increased community capacity to respond to and recover from emergency events.</p>	<p>Currency and review status of Local Emergency Management Arrangements and associated plans.</p> <p>Participation levels in emergency preparedness initiatives and activities.</p> <p>Number of joint activities, meetings or exercises conducted with DFES and partner agencies.</p> <p>Community engagement and awareness activities delivered.</p>	<p><b>Protect:</b> Prepare for and minimise the impacts of public health emergencies and environmental hazards.</p> <p><b>Protect:</b> Strengthen emergency preparedness, response and recovery capability.</p> <p><b>Engage:</b> Build resilient, informed and connected communities</p>

## 6. Section C: Monitoring and evaluation framework

### 6.1 Evaluation and reporting

The Shire of Kent will monitor and evaluate the implementation of this Public Health Plan using a staged approach:

#### Short-term (1–2 years)

- Delivery of actions
- Implementation of policies and programs

#### Medium-term (3–5 years)

- Changes in community behaviours
- Increased participation in programs

#### Long-term (5+ years)

- Improved health outcomes
- Reduced chronic disease prevalence

#### Monitoring Approach

- Annual internal reporting to Council
- Use of available datasets (ABS, WACHS, etc.)
- Tracking of action plan measures

This Plan will apply for a period of 5 years, with annual review and updates as required.

### 6.2 Reporting

In accordance with Section 22 of the *Public Health Act 2016 (WA)*, the Shire of Kent will report to the Chief Health Officer on the performance of its public health functions, including:

- Implementation of the Public Health Plan
- Progress against identified actions
- Emerging public health risks

## References

Australian Bureau of Statistics. (2021). *Census of Population and Housing: General Community Profile – Shire of Kent (LGA)*.

Australian Institute of Health and Welfare. (n.d.). *Australia's Health Data and Statistics*.

Department of Fire and Emergency Services. (n.d.). *Emergency Management Framework and Resources*.

Department of Local Government, Sport and Cultural Industries. (n.d.). *Integrated Planning and Reporting Framework and Guidelines*.

Epidemiology Directorate, Public and Aboriginal Health Division, Department of Health WA. (January 2026). *Public Health Atlas*.

Government of Western Australia, Department of Health. (2025). *State Public Health Plan for Western Australia 2025–2030*.

Government of Western Australia, Department of Health. (n.d.). *Public Health Planning Guide for Local Government*.

Government of Western Australia. (1995). *Local Government Act 1995 (WA)*.

Government of Western Australia. (2016). *Public Health Act 2016 (WA)*.

Great Southern Development Commission. (n.d.). *Regional Development Strategy and Profiles*.

Shire of Kent. (2023). *Strategic Community Plan 2023–2033*.

Shire of Kent. (2026). *Public Health Plan & Age Friendly Community Survey Results*.

Shire of Kent. (n.d.). *Corporate Business Plan*.

Shire of Kent. (n.d.). *Local Emergency Management Arrangements*.

WA Country Health Service. (n.d.). *Great Southern Health Profile*.

WA Local Government Association. (n.d.). *Local Government Public Health Resources*.